



SENSATIONNEL®

MAR/APR 2023

Spring
EDITION

#SensationnelHair



Model is wearing: CLIP IN 22
Color Used: 1B

Model is wearing: CLIP IN 22
Color Used: 8/10/16

Model is wearing: CLIP IN 18
Colors Used: 2, 4



EVERLY™

100% REMY HUMAN HAIR

1 PIECE 10" WEFT | 1 PIECE 7" WEFT | 1 PIECE 5" WEFT | 2 PIECES 3.5" WEFTS | 2 PIECES 2" WEFTS



Coming Soon

CLIP-INS REIMAGINED...

New Butterfly Clip In™ fasteners grip hair from the side; they hug your hair, without pulling or creating tension.

PATENTED TECHNOLOGY

- Gently hugs your hair from the side
- Silicone mid-layer provides cushion
- Tension-free for less snags and pulls

SEAMLESS WEFT

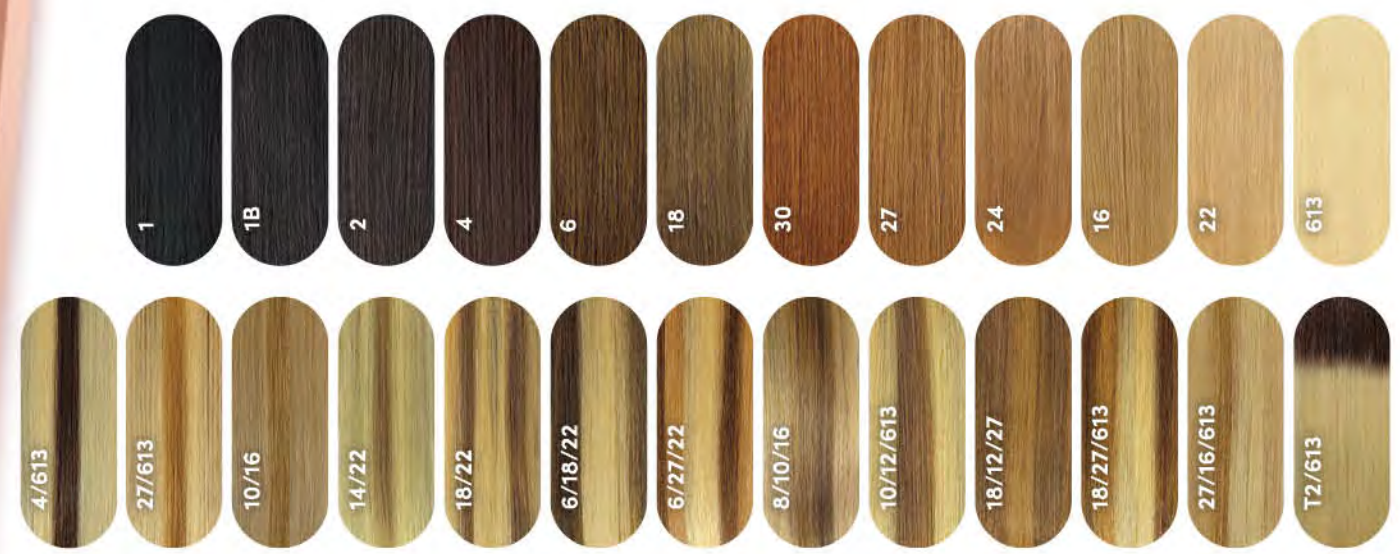
- Made with a transparent silicone-like material
- Lays flat and contours to your head shape
- Blends seamlessly with your own hair

25 COLORS

- Wide variety of colors and shades
- Color matching made easy
- Basics, mixed, and two-toned



Butterfly Clip In™
PATENT PENDING



7 PIECE CLIP IN HAIR EXTENSIONS Available Styles CLIP IN 18 & CLIP IN 22

IN THIS ISSUE...

100% REMY & 100% HUMAN HAIR
2-3 Everly™ | Clip-Ins
4-5 Empire®

HUMAN HAIR & PREMIUM FIBER BLEND
6-7 Cloud 9™ | What Lace®
12 What Lace® | Butta Lace®

100% PREMIUM FIBER
8-9 Cloud 9™ | What Lace®
10-11 Cloud 9™ | Braided Lace Wig
12-13 What Lace® | Butta Lace®
14-17 Dashly®

18-19 Vice®
20-21 Instant Up & Down®
22-23 Instant Weave® Drawstring
24-25 Lulu Pony®

HD LACE WIGS
6-9 Cloud 9™ | What Lace®
10-11 Cloud 9™ | Braided Lace Wig
12-13 What Lace® | Butta Lace®
19 Vice® | HD Lace Wig

FULL WIGS & HALF WIGS
14-15 Dashly® | Lace Part Wig
16-17 Dashly® | Full Wig
20-21 Instant Up & Down®
22-23 Instant Weave® Drawstring

CLOSURES & HAIR PIECES
2-3 Everly™ | Clip-Ins
4-5 Empire®
18 Vice® | Multi Bundle
20-21 Instant Up & Down®
22-23 Instant Weave® Drawstring
24-25 Lulu Pony®

BRAIDING HAIR
26 Lulutress®
27 X-Pression®
28 Ruwa®

New Deep 18" Color: 1

New Deep 14"/16"/18" Color: 2

Ocean Wave 14"/16"/18" Color: T1B/30

Ocean Wave 18" Color: 1

EMPIRE®

100% HUMAN HAIR

THE GOLD STANDARD

Empire® Sets The Standard As The #1 HUMAN HAIR Weaving On The Market.

Coming Soon

New! TEXTURES



NEW DEEP (SINGLE PACK)

Available Lengths: 10", 12", 14", 16", 18"
Available Colors: 1, 1B, 2, 4, 27, 30, 99J, BG, S1B/30, S4/30, T1B/27, T1B/30, T1B/BG

NEW DEEP 12" HD LACE CLOSURE

Available Colors: 1, 1B, 2, 4



NEW DEEP (MULTI PACK)

3 Lengths + FREE Closure

Available Lengths: 10"/12"/14" • 12"/14"/16" • 14"/16"/18"
Available Colors: 1, 1B, 2, S1B/30, S4/30, T1B/27, T1B/30, T1B/BG



OCEAN WAVE (MULTI PACK)

3 Lengths + FREE Closure

Available Lengths: 10"/12"/14" • 12"/14"/16" • 14"/16"/18"
Available Colors: 1, 1B, 2, S1B/30, S4/30, T1B/27, T1B/30, T1B/BG



OCEAN WAVE (SINGLE PACK)

Available Lengths: 10", 12", 14", 16", 18"
Available Colors: 1, 1B, 2, 4, 27, 30, 99J, BG, S1B/30, S4/30, T1B/27, T1B/30, T1B/BG

OCEAN WAVE 12" HD LACE CLOSURE

Available Colors: 1, 1B, 2, 4

what lace?

Human Hair & Premium Fiber Blend

WELL CRAFTED

Ear-to-Ear HD Lace With Combs, Adjustable Straps, And Additional Elastic Wig Band, For A Secure, Glueless Install.



PRE-CUSTOMIZED

Extra Large HD Lace Area. 100% Hand Tied And Pre-plucked To Create A Realistic, Natural Density, Illusion Hairline.



UNDETECTABLE

Virtually Undetectable HD Lace With Baby Hairs For A Flawless Hairline and Natural Look Right Out of the Box.



New!

RAVEENA 28"

Color Shown: COLOR MELT HAZEL

New!

AZIZA 26"

Color Shown: 1



New!

ARABELLA 28"

Color Shown: COLOR MELT BLONDE



New!

EZRA 28"

Color Shown: 1B



Available Colors: 1, 1B, 2, 613, COLOR MELT BLONDE, COLOR MELT CARAMEL, COLOR MELT CHOCOLATE, COLOR MELT GOLD, COLOR MELT HAZEL, COLOR MELT MOCHA



Color Melt

COLOR MELT: A Technique That Blends Balayage Highlights And Ombre Gradation With Three Or More Shades.



Color Melt
BLONDE



Color Melt
CARAMEL



Color Melt
CHOCOLATE



Color Melt
GOLD



Color Melt
HAZEL



Color Melt
MOCHA

whatlace?[®]

HAIRLINE ILLUSION LACE WIG



New!



New!



New!



New!

100% PREMIUM FIBER | WHAT LACE?[®]

-Cloud 9-
SWISS LACE WIG
100% PREMIUM FIBER

HD lace
KEEP IT IN QUESTION

ANISHA

13 x 6

whatlace?
HAIRLINE ILLUSION LACE WIG



ANISHA

Available colors:
1, 1B, 2, 613,
BALAYAGE CARAMEL,
BALAYAGE CHOCOLATE,
BALAYAGE GOLD,
BALAYAGE HAZELNUT,
BALAYAGE MOCHA, T2/350

-Cloud 9-
SWISS LACE WIG
100% PREMIUM FIBER

HD lace
KEEP IT IN QUESTION

ORIANA

13 x 6

whatlace?
HAIRLINE ILLUSION LACE WIG



ORIANA

Available colors:
1, 1B, 2,
BALAYAGE CARAMEL,
BALAYAGE CHOCOLATE,
BALAYAGE GOLD,
BALAYAGE HAZELNUT,
BALAYAGE MOCHA,
T1B/4, T2/350

-Cloud 9-
SWISS LACE WIG
100% PREMIUM FIBER

HD lace
KEEP IT IN QUESTION

GLENNA

13 x 6

whatlace?
HAIRLINE ILLUSION LACE WIG



GLENNA

Available colors:
1, 1B, 2, 613,
BALAYAGE CARAMEL,
BALAYAGE CHOCOLATE,
BALAYAGE GOLD,
BALAYAGE MOCHA,
BALAYAGE PLATINUM,
LIGHT ASH BROWN, T6/27613

-Cloud 9-
SWISS LACE WIG
100% PREMIUM FIBER

HD lace
KEEP IT IN QUESTION

DAVINA

13 x 6

whatlace?
HAIRLINE ILLUSION LACE WIG



DAVINA

Available colors:
1, 1B, 2, 613,
BALAYAGE CARAMEL,
BALAYAGE CHOCOLATE,
BALAYAGE GOLD,
BALAYAGE HAZELNUT,
BALAYAGE MOCHA, T2/27, T2/30

STYLED AS UPDO

New!



BOX BRAID 36"
Color Shown: 1B

New!

STYLED AS UPDO



SENEGAL TWIST 36"
Color Shown: 1B

100% FULL
HAND-TIED
• BRAIDED LACE WIG •

FULL LACE CAP

"Skip Your Trip to The Salon"

When you want flawless braids but don't have hours to install/uninstall, Cloud 9™ Braided Lace Wigs have you covered. **No more spending hundreds of dollars and hours at the salon for braids.** Our newest units feature individually braided strands on a **FULL HD LACE CAP** with baby hairs along hairline, for a natural finish.

Available Styles: **BOX BRAID 36"** & **SENEGAL TWIST 36"** Available Colors: 1, 1B, 2

✓ SAVE TIME ✓ SAVE MONEY ✓ LOOK STYLISH

Hand-Braided FULL LACE



- ✓ INDIVIDUALLY BRAIDED STRANDS
- ✓ VIRTUALLY UNDETECTABLE HD LACE
- ✓ NATURAL EDGES WITH BABY HAIR
- ✓ HIGH QUALITY BRAIDING FIBER
- ✓ WEFT-FREE, FULL HD LACE CAP



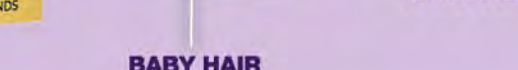
FULL LACE CAP



COMBS



HAND BRAIDED



BABY HAIR

NATURAL PARTING

ELASTIC BAND



100% PREMIUM FIBER | CLOUD 9™ BRAIDED LACE WIGS



New!



HUMAN HAIR FIBER BLEND

Features a wider, pre-customized frontal area that brings you a little closer to what you get with our top of the line What Lace?® Brand.

(ORIGINAL) 100% PREMIUM FIBER

Beginner friendly units that are known for their easy to customize cap with Extra wide 5" deep hand tied HD Lace part.



LOOSE BEACH WAVE 28"

Available Colors: 1, 1B, 2, BALAYAGE CARAMEL, BALAYAGE CHOCOLATE, BALAYAGE GOLD, BALAYAGE HAZELNUT, BALAYAGE MOCHA, FLAMBOYAGE AUBURN, FLAMBOYAGE BLONDE, FLAMBOYAGE MOCHA, FLAMBOYAGE SAND

New!



BUTTA UNIT 39

Available Colors: 1, 1B, 2, BALAYAGE CARAMEL, BALAYAGE CHOCOLATE, BALAYAGE GOLD, BALAYAGE HAZELNUT, BALAYAGE LATTE, BALAYAGE MOCHA, CHUNKY HIGHLIGHT 27, CHUNKY HIGHLIGHT 30, CHUNKY HIGHLIGHT BLONDE



NEW

BUTTA UNIT 34



Available Colors: 1, 1B, 2, BALAYAGE CARAMEL, BALAYAGE GOLD, BALAYAGE LATTE, CHUNKY HIGHLIGHT 27, CHUNKY HIGHLIGHT 30, **CHUNKY HIGHLIGHT BLONDE**, FLAMBOYAGE BLONDE, FLAMBOYAGE CHOCOLATE, FLAMBOYAGE MOCHA



NEW

BUTTA UNIT 36



Available Colors: 1, 1B, 2, BALAYAGE CARAMEL, BALAYAGE CHOCOLATE, **BALAYAGE GOLD**, BALAYAGE HAZELNUT, BALAYAGE MOCHA, T1B/4, T2/350



NEW

BUTTA UNIT 37



Available Colors: 1, 1B, 2, BALAYAGE CARAMEL, BALAYAGE GOLD, BALAYAGE LATTE, CHUNKY HIGHLIGHT 27, CHUNKY HIGHLIGHT 30, **CHUNKY HIGHLIGHT BLONDE**, FLAMBOYAGE BLONDE, FLAMBOYAGE CHOCOLATE, **FLAMBOYAGE MOCHA**



NEW

BUTTA UNIT 35



Available Colors: 1, 1B, 2, BALAYAGE CARAMEL, BALAYAGE CHOCOLATE, BALAYAGE GOLD, BALAYAGE HAZELNUT, BALAYAGE LATTE, BALAYAGE MOCHA, **CHUNKY HIGHLIGHT 27**, **CHUNKY HIGHLIGHT 30**, **CHUNKY HIGHLIGHT BLONDE**



NEW

BUTTA UNIT 38



Available Colors: 1, 1B, 2, BALAYAGE GOLD, **BALAYAGE HAZELNUT**, BALAYAGE LATTE, **CHUNKY HIGHLIGHT 27**, **CHUNKY HIGHLIGHT 30**, **CHUNKY HIGHLIGHT BLONDE**, FLAMBOYAGE CHOCOLATE, FLAMBOYAGE MOCHA

BUTTA LACE® CURRENTLY OFFERS 2 LINES:
Although The Cap Features And Fibers Differ, As Shown Above, All Units Feature Virtually Undetectable HD Lace And Pre-Plucked Hairlines With Baby Hair.

100% PREMIUM FIBER | BUTTA LACE®

13.

dashly.[®]

Lace Part Wig



Coming Soon...
Lace Part
Dashly[®]

"Hint, hint" of what's to come, introducing Dashly[®] Lace Part Wig. Featuring D.I.Y. beginner friendly, "On The Go Styles". Come rain or shine, achieve your effortless look in a dash!

Fast Fashion Meets Hair.



Coming Soon!



LP UNIT 2

Available Colors:
1, 1B, 2, 613, T2/27, T2/30, T2/BG, T2/COPPER

Coming Soon!



LP UNIT 1

Available Colors:
1, 1B, 2, T2/27, T2/30, T2/BG, T2/COPPER

Coming Soon!



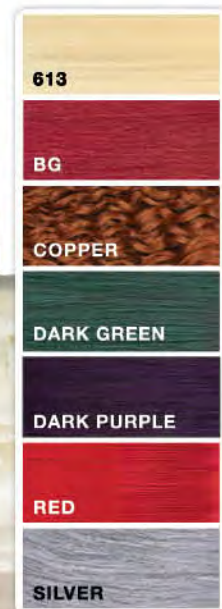
LP UNIT 3

Available Colors:
1, 1B, 2, T2/27, T2/30, T2/BG, T2/COPPER

dashly® Full Wig



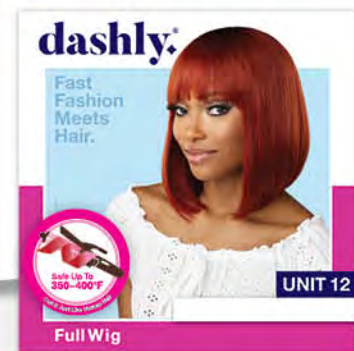
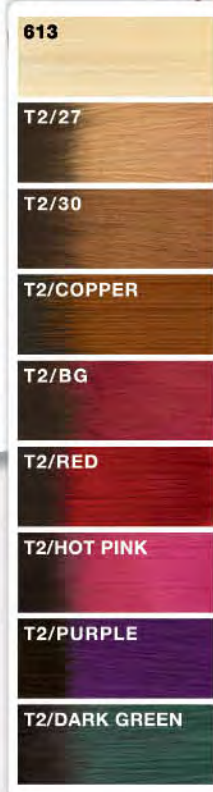
New!



UNIT 11
Available Colors:
1, 1B, 2, 613, BG,
COPPER, **DARK GREEN**,
DARK PURPLE, RED, SILVER



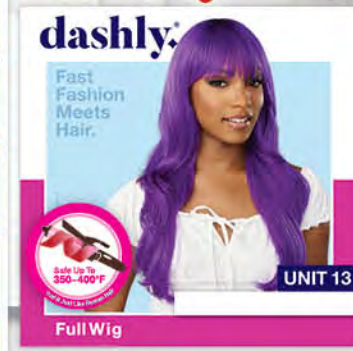
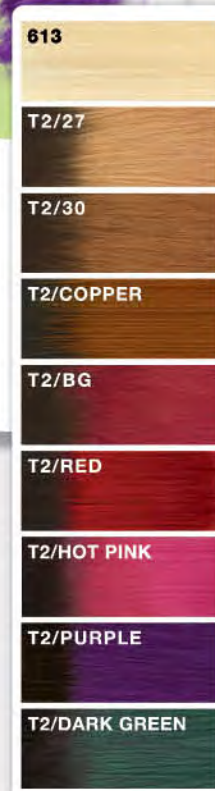
New!



UNIT 12
Available Colors:
1, 1B, 2, 613, T2/27, T2/30,
T2/BG, **T2/COPPER**,
T2/DARK GREEN,
T2/HOT PINK,
T2/PURPLE, T2/RED



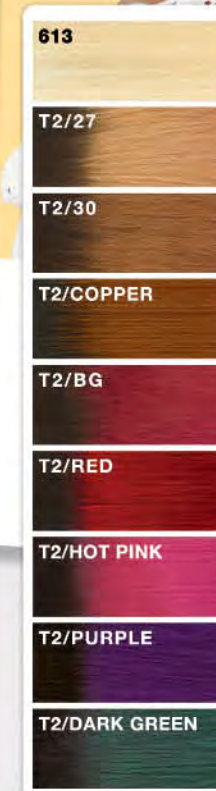
Coming Soon



UNIT 13
Available Colors:
1, 1B, 2, 613, T2/27, T2/30,
T2/BG, T2/COPPER,
T2/DARK GREEN,
T2/HOT PINK,
T2/PURPLE, T2/RED



Coming Soon



UNIT 14
Available Colors: 1, 1B, 2, 613,
T2/27, T2/30, T2/BG, T2/COPPER,
T2/DARK GREEN, T2/HOT PINK,
T2/PURPLE, **T2/RED**

*There's no time like spring time
TO BLOSSOM IN COLOR...*

New! STYLES



Style: **BOHO CURL**

3X MULTI PACK 3 BUNDLES + 2x5 HD Lace Closure

Available Lengths & Colors: 14"/16"/18", 18"/20"/22", 26"/28"/30" | 1, 1B, 2, 613, BALAYAGE AUBURN, BALAYAGE BLONDE, T2/27, T2/30, T2/BG



Style: **DEEP TWIST**



VICE UNIT 16 | VICE UNIT 15

Available Colors for Above Styles:
 1, 1B, 2, BALAYAGE CHOCOLATE, BALAYAGE GOLD, BALAYAGE MOCHA, FUCHSIA, LT613/BLUE, LT613/PINK, T4/CHESTNUT BLONDE, TIP DYE HOT PINK, TIP DYE PURPLE



New! Fresh Bouncy WAVES!

Spring is in the air and these flowing waves are the latest additions to our Vice® HD Lace Wig collection. Both these Vice® are bouncy, stylish and spring ready.



Color Shown:
BALAYAGE MOCHA (Left Model)
T4/CHESTNUT BLONDE (Right Model)



100% PREMIUM FIBER | VICE® HD LACE WIG

FAN FAVORITE #1

- BALAYAGE CARAMEL
- BALAYAGE CHOCOLATE
- BALAYAGE GOLD
- BALAYAGE HAZELNUT
- BALAYAGE MOCHA
- FLAMBOYAGE AUBURN
- FLAMBOYAGE BLONDE
- FLAMBOYAGE CHOCOLATE
- FLAMBOYAGE MOCHA
- T1B/4
- T2/27
- T2/30
- T2/613
- T2/BG
- T2/COPPER

Available Special Colors May Vary Per Style



UD 13
STYLED AS
UP-DO



1 Complete Pack
4 EASY STYLES!



UD 14
STYLE D AS
PONY - WRAP



Instant **UP & DOWN**

UD13 Available Colors:
1, 1B, 2, 4, T1B/4, T2/27, T2/30, T2/613, T2/BG, T2/COPPER

UD14 Available Colors:
1, 1B, 2, 4, BALAYAGE CARAMEL, BALAYAGE CHOCOLATE, **BALAYAGE GOLD**, BALAYAGE HAZELNUT, BALAYAGE MOCHA, T2/27, T2/30, T2/613

UD15 Available Colors:
1, 1B, 2, 4, FLAMBOYAGE AUBURN, **FLAMBOYAGE BLONDE**, FLAMBOYAGE CHOCOLATE, FLAMBOYAGE MOCHA, T2/27, T2/30, T2/613, T2/COPPER

UD16 Available Colors:
1, 1B, 2, 4, FLAMBOYAGE AUBURN, FLAMBOYAGE BLONDE, FLAMBOYAGE CHOCOLATE, FLAMBOYAGE MOCHA, T2/27, T2/30, T2/613, T2/COPPER

UD17 Available Colors:
1, 1B, 2, 4, T1B/4, T2/27, T2/30, T2/BG, T2/COPPER

New!



UD 15
STYLED AS
HALF UP,
HALF DOWN



New!



UD 16
STYLED AS
HALF WIG



New!



100% PREMIUM FIBER | INSTANT UP AND DOWN®

21.

SPRING READY
DRAW STRINGS

The latest 2-in-1 salon styles from our multi-functional Instant Weave® Drawstring brand. Wear as a half-wig or an up-do. Spring ready with the pull of a string!



Style: **IWD 10**
Available Colors: 1, 1B, 2, 4, T1B/4, TH2/27, TH2/30, TH2/BG, TH2/COPPER

Styles: **IWD 11, IWD 12**
Available Colors: 1, 1B, 2, 4, T1B/4, T2/27, T2/30, T2/BG, T2/COPPER

Styled as: **UPDO**



IWD 10

Styled as: **HALF WIG**



Color Shown: TH2/30

Styled as: **UPDO**



IWD 11

Styled as: **HALF WIG**



Color Shown: 1B

Styled as: **UPDO**



IWD 12

Styled as: **HALF WIG**



Color Shown: T2/COPPER

New! NATURAL YAKI TEXTURE, Slightly Bumped



Style as: **HALF WIG**



Style: **IWD 13**
Available Colors: 1, 1B, 2, 4, T1B/4, T2/27, T2/30, T2/BG, T2/COPPER

New! Mix of **TIGHT S-SHAPED & RINGLET CURLS**



Style as: **UPDO**



Style: **IWD 14**
Available Colors: 1, 1B, 2, 4, T1B/4, TH2/27, TH2/30, TH2/BG, TH2/COPPER

lulu pony[®] Wrap

Features:

- 100% Premium Quality Fiber
- Fashion Forward Hair Pieces That Help You Create A New Look Instantly.
- Various Choices For All And Every Occasion.
- Perfect Protective Style For All Hair Types.
- Affordable And Easy To Maintain.



SPECIAL COLORS

(Availability may vary by style and retailer)



WRAP 4
LULU PONY[®] WRAP
AVAILABLE COLORS:
1, 1B, 2, 4, F1B/30,
T2/27, T2/30, T2/BG



WRAP 4
LULU PONY[®] WRAP



WRAP 1
LULU PONY[®] WRAP
AVAILABLE COLORS:
1, 1B, 2, 4, SM2/27,
SM2/30, SM2/BG



WRAP 2
LULU PONY[®] WRAP
AVAILABLE COLORS:
1, 1B, 2, 4, SM2/27,
SM2/30, SM2/BG



WRAP 3
LULU PONY[®] WRAP
AVAILABLE COLORS:
1, 1B, 2, 4, F1B/30,
T2/27, T2/30, T2/BG

WRAP 5
LULU PONY[®] WRAP
AVAILABLE COLORS:
1, 1B, 2, 4, F1B/30,
T2/27, T2/30, T2/BG



BISI

New!

COLOR SHOWN: 2



WINI

New!

COLOR SHOWN: 1B



LULU PONY[®] (DRAWSTRING PONYTAIL)
Available Colors: 1, 1B, 2, 4, F1B/30,
T2/27, T2/30, T2/BG

SPRING STYLE

a New TWIST IN SPRING

For your go-to popular styles, Lulutress® now brings you 3X Twisted Distressed Locs. It's 26 inches of thinly twisted textured locs, for a more natural finish. Easy to install, this season freshen your look with a twist.



Lulutress

STYLE: (PRE-LOOPED)

**3X TWISTED
DISTRESSED LOCS 26"**

AVAILABLE COLORS:
1, 1B, 2, 4, 27, 30, BG, SM1B/27,
SM1B/30, SM1B/BG

New!



New!
COLORS

X-PRESSION®
*always in
the spotlight.*

Now In Stock, X-pression® 3X Pre-stretched 58 inch Braiding hair adds new hues Indigo, Marsh, and Pebble to it's array of available colors.



100% KANEKALON® FIBER | X-PRESSION®

Style Shown: 3X PRE-STRETCHED BRAID
24" Color: Blue and 18" Color: 1B

RUWVA®

Made With Aquatex® Fiber From Kanekalon®

Aquatex® and Kanekalon® are registered trademarks of Kaneka Corporation. © 2023 Kaneka Corporation. All rights reserved.

#SensationnelHair
©2023 Hair Zone, Inc.



WWW.SENSATIONNEL.COM