



SENSATIONNEL®

JAN/FEB 2022

2022

New Year
EDITION

#SensationnelHair





HD 13x4
LACE PARTING
AREA

feel the LOVE

HAIR THAT FEELS AS LUXURIOUS AS IT LOOKS.

Bare & Natural® 15A HD LACE WIGS are made with pure, natural virgin hair raw material; one of the most luxurious bundle hair in the market. Fall in love with hair that has better ratio, long lasting curl retention and a softer touch.

AVAILABLE COLORS:
NATURAL, NATURAL BLACK

BLEACH • PERM • DYE

15A GRADE 100% VIRGIN HUMAN HAIR

EAR-TO-EAR WITH 13" X 4"
HD LACE PARTING AREA

180% DENSITY WITH
PRE-PLUCKED HAIRLINE

FLEXIBLE MESH CAP
WITH COMBS AND STRAPS



FACTORY DIRECT
15A
UNPROCESSED
BUNDLE IMPORT

Loose Wave 24"

COLOR SHOWN:
NATURAL



Kinky Curly 16"

COLOR SHOWN: NATURAL



Body Wave 24"

COLOR SHOWN: NATURAL

HD LACE WIG
100% VIRGIN HUMAN HAIR



Straight 26"

COLOR SHOWN: NATURAL BLACK



Bob 10"

COLOR SHOWN: NATURAL BLACK

IN THIS ISSUE...

100% VIRGIN HUMAN HAIR

- 2-3 15A HD Lace Wig
- 4-5 12A | Wet & Wavy Headband Wigs
- 6 12A HD Lace Frontal
- 7 12A Weaving

100% HUMAN HAIR

- 8 Empire® | Lace Wig
- 9 Empire® | Full Wig
- 10-11 Empire® | Clip-In Bangs

100% HUMAN HAIR & PREMIUM BLEND

- 12-13 What Lace® | Butta Lace®

HD LACE WIGS

- 2-3 15A HD Lace Wig
- 12-14 What Lace® | Butta Lace®
- 14-15 Vice®
- 15 Cloud9™ | Braided

FULL WIGS & HEADBAND WIGS

- 4-5 12A | Wet & Wavy Headband Wigs
- 9 Empire® | Full Wig
- 16-17 Dashly® | Headband Wig & Bangs

HAIR PIECES

- 6 12A HD Lace Frontal
- 10-11 Empire® | Clip-In Bangs
- 16-17 Dashly® | Headband Wig & Bangs

BRAIDING HAIR

- 18-21 Lulutress®
- 22 X-Pression®
- 23 Ruwa®
- 24 Ruwa® | Kids Braid



FACTORY DIRECT
12A
UNPROCESSED
BUNDLE IMPORT

Wet & Wavy HEADBAND WIGS

Wear Straight Or Curly When Wet.

12A Grade 100% Virgin Human Hair
With An Attached Headband.

Cool-Fit Headband Actively Pulls Heat
From Your Scalp.

Adjustable Straps To Fit Various Head Sizes.

Combs For Extra Security.

*Accessory
Not Included

*Accessory
Not Included

*Accessory
Not Included



LOOSE WAVE 20"
AVAILABLE COLORS : NATURAL, NATURAL BLACK



DEEP 20"
AVAILABLE COLORS : NATURAL, NATURAL BLACK



BOHEMIAN 18"
AVAILABLE COLORS : NATURAL, NATURAL BLACK

100% VIRGIN HUMAN HAIR | 12A WET & WAVY

WET & WAVY



Photo Finish HD LACE FRONTAL



VIRTUALLY UNDETECTABLE HD LACE
100% VIRGIN HUMAN HAIR
PRE-PLUCKED WITH BABY HAIRS
BLEACH • PERM • DYE

STYLE: **STRAIGHT** AVAILABLE LENGTHS: **10" • 12" • 14"**
 AVAILABLE COLORS: **NATURAL, NATURAL BLACK**

Bare & Natural® 12A HD LACE Frontals are made with 12A Grade Virgin Human Hair for excellent performance in **bleaching, perming and dyeing**. The HD lace material blends with most skintones and is virtually undetectable. This frontal can be paired with our many bundle weaving items for a flawless finish.

New

Layered lengths 3X MULTI BUNDLES



AVAILABLE STYLES :
3X STRAIGHT • 3X BODY WAVE

AVAILABLE LENGTH COMBINATIONS :
10", 12", 14" • 12", 14", 16" • 14", 16", 18"
16", 18", 20" • 18", 20", 22"

AVAILABLE COLORS : **NATURAL, NATURAL BLACK**

FACTORY DIRECT
12A
 UNPROCESSED
 ★ ★ ★ ★ ★
 BUNDLE IMPORT

New!
STYLES



- 100% HUMAN HAIR
- EAR-TO-EAR LACE WITH DEEP HAND-TIED PART
- FLEXIBLE MESH CAP
- ARGAN OIL INFUSED
- CAN BE STYLED WITH CURLING IRON OR FLAT IRON



ERIN
AVAILABLE COLORS:
1, 1B, 2, 4, 99J, F1B/27,
F1B/30, F1B/99J

EMPIRE
100% HUMAN HAIR
LACE WIG
Celebrity
★ SERIES ★

New!
STYLES



RAMONA
AVAILABLE COLORS:
1, 1B, 2, 613, T2/27,
T2/30, T2/350, T2/BG



JOSIE
AVAILABLE COLORS:
1, 1B, 2, 613, T2/27,
T2/30, T2/350, T2/BG

EMPIRE
WIG

100% HUMAN HAIR

CELEBRITY
★ SERIES ★

- 100% HUMAN HAIR
- FLEXIBLE MESH CAP
- SOFT & SMOOTH TEXTURE
- ARGAN OIL INFUSED
- CAN BE STYLED WITH CURLING IRON OR FLAT IRON



100% HUMAN HAIR | EMPIRE® WIG

9.

100% HUMAN HAIR CAN BE STYLED WITH A CURLING IRON OR FLAT IRON.

New
PRODUCT



A SMALL ADDITION CAN

MAKE A BIG IMPACT

Bangs Are An Amazing Way To Amp Up Your Style! Elevate Your Look With Empire® 100% Human Hair Clip On Bang Pieces.

- Get The Perfect Bang Style Without Cutting Your Own Hair.
- Wear With Your Natural Hair Or Pair It Up With Ponytails, Buns And Other Hair Extension Items.
- Easy 3-step Wear: Unclip, Clip, And Style.
- Has Two Combs In The Front And One Comb In The Back For Extra Secure Fit.



SIDE SWEEP BANG
AVAILABLE COLORS:
1, 1B, 2



CHINA BANG
AVAILABLE COLORS:
1, 1B, 2

EMPIRE® CLIP-IN BANGS



100% HUMAN HAIR | EMPIRE® CLIP-IN BANGS

Smooth like...

butta lace

HUMAN HAIR & PREMIUM FIBER BLEND

from the makers of **whatlace?**

These new Butta Lace® Styles are here to give you that superstar glow. *Hotter?* You bet, the invisible lace absorbs light making it virtually undetectable as it "melts" into almost all skin-tones! And *sweeter* as it comes pre-plucked with Baby-hairs! *Cooler?* Yup, with that extremely natural appearance! **Butta Lace®!**



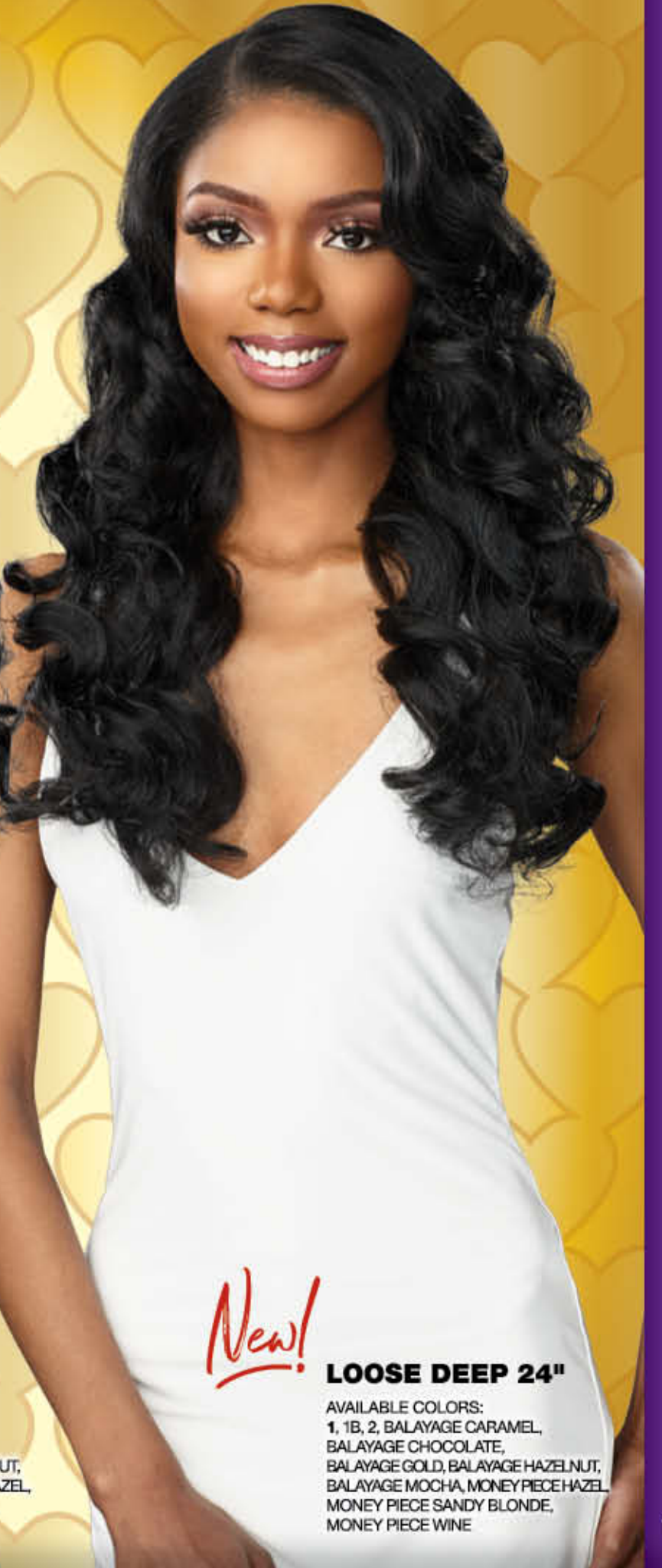
New! **LOOSE WAVE 30"**

AVAILABLE COLORS:
1, 1B, 2, BALAYAGE CARAMEL,
BALAYAGE CHOCOLATE,
BALAYAGE GOLD,
BALAYAGE HAZELNUT,
BALAYAGE MOCHA, T2/27,
T2/30, T6/27613



New! **DEEP WAVE 30"**

AVAILABLE COLORS:
1, 1B, 2, BALAYAGE CARAMEL,
BALAYAGE CHOCOLATE,
BALAYAGE GOLD, BALAYAGE HAZELNUT,
BALAYAGE MOCHA, MONEY PIECE HAZEL,
MONEY PIECE SANDY BLONDE,
MONEY PIECE WINE



New! **LOOSE DEEP 24"**

AVAILABLE COLORS:
1, 1B, 2, BALAYAGE CARAMEL,
BALAYAGE CHOCOLATE,
BALAYAGE GOLD, BALAYAGE HAZELNUT,
BALAYAGE MOCHA, MONEY PIECE HAZEL,
MONEY PIECE SANDY BLONDE,
MONEY PIECE WINE

100% HUMAN HAIR & PREMIUM FIBER BLEND | BUTTA LACE®

Embrace Your Inner Queen

These HD Lace Wigs are certainly fit for a Queen! Whether you are in the mood for something short and sweet or long and sultry locks, these romantic styles are sure to win your heart's desires.

Q
♥

BUTTA UNIT 19

BUTTA UNIT 19

AVAILABLE COLORS:
 1, 1B, 2, BALAYAGE CARAMEL,
 BALAYAGE CHOCOLATE,
 BALAYAGE FIERY RED,
 BALAYAGE GOLD,
 BALAYAGE HAZEL NUT,
 BALAYAGE MOCHA,
 BALAYAGE SUNKISSED



BUTTA LACE®



BUTTA UNIT 19
 VIRTUALLY UNDISCREETABLE HD LACE
 4X4 BRAIDED
 LACE PARTING

VICE UNIT 9

VICE UNIT 9

AVAILABLE COLORS:
 1, 1B, 2, BALAYAGE CARAMEL,
 BALAYAGE CHOCOLATE,
 BALAYAGE GOLD,
 BALAYAGE HAZEL NUT,
 BALAYAGE MOCHA, T2/27,
 T2/30, T6/27613



VICE™



VICE UNIT 9
 HD LACE WIG
 OTHERS
 VICE™
 NATURAL
 HD LACE
 PRE-PLUCKED
 NODDLE
 BABY HAIR
 VICE UNIT 9

FEED-IN BOX BRAID TWIST 12"

FEED-IN BOX BRAID TWIST 12"

AVAILABLE COLORS:
 1, 1B, 2, 613, T1B/27, T1B/30,
 T1B/BG



4X4 BRAIDED
 CLOUDS™



FEED-IN BOX BRAID TWIST 12"
 HD LACE WIG
 4x4 LACE PARTING

New!

dashly®

Headband Wig & Bangs

- Comfortable And Breathable Headband Is Made With Cool-Fit Fabric That Actively Pulls Heat From Your Scalp.
- Detachable/Removable Bang Piece For Versatility.
- Cap Size Can Be Adjusted To Fit Various Head Sizes.
- Combs For Extra Security.
- Functional, Yet Chic And Comfy Style.
- Great Protective Style For Any Occasion.



HBB UNIT 1 Available Colors : 1, 1B, 2, F1B/30, T2/27, T2/30, T2/BG



Add An Accessory

HBB UNIT 1
Color Shown: 1

* WEAR WITH OR WITHOUT BANG PIECE

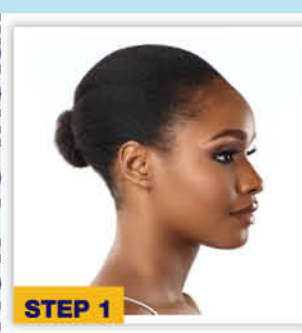


HBB UNIT 2
Available Color: 1, 1B, 2, F1B/30, T2/27, T2/30, T2/BG

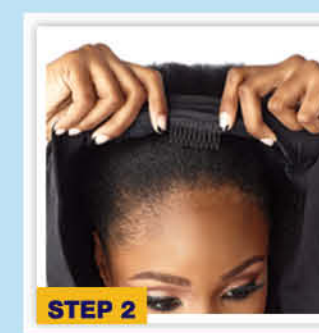


HBB UNIT 3
Available Color: 1, 1B, 2, F1B/30, TH2/27, TH2/30, TH2/BG

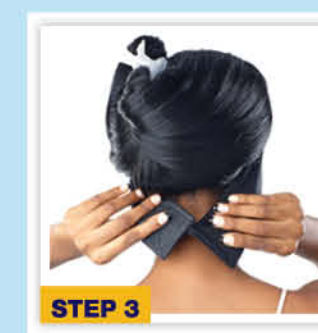
How To Install



Pull Your Hair Back Into a Low Ponytail or Bun.



Insert Front Comb, Hold the Cap Down, Insert the Back Comb.



Secure the Headband Using Velcro. Lay Your Edges and Style as Desired.



Scan Code for Tutorial!

Lulutress



**LOC
OLOGY**

Getting To Know The Anatomy
Of Our Many Lulutress® Loc Styles.



**BUTTERFLY
LOCS 36"**

Extra long locs style
made with curly/wavy
hair with irregular
loops sticking out.

AVAILABLE COLORS:
1, 1B, 2, 4, T1B/27,
T1B/30, T1B/BG



**2X SKINNY
BUTTERFLY LOCS 18"**

Thinner version of the Butterfly
Locs with narrower locs
creating a smoother finish.

AVAILABLE COLORS:
1, 1B, 2, 4, 27, 30, 613, BG, T1B/27,
T1B/30, T1B/BG



**3X BUTTERFLY LOCS
BOB 8", 10", 12"**

Butterfly locs in 3 different
shorter lengths to achieve
the perfect Bob length look.

AVAILABLE COLORS:
1, 1B, 2, 4, 27, 30, BG, SM1B/27,
SM1B/30, SM1B/BG



**2X BOX
BUTTERFLY 18"**

Box braids with irregular
loops sticking out and a curly
finish at the ends.

AVAILABLE COLORS:
1, 1B, 2, 4, 27, 30, 613, BG, T1B/27,
T1B/30, T1B/350, T1B/BG



**2X BUTTERFLY
LOCS II 18"**

Upgraded Butterfly Locs
with more visible loops on
the wrapped strands.

AVAILABLE COLORS:
1, 1B, 2, 4, 27, 30, 350, 613, BG



**3X DISTRESSED
LOCS 24"**

Faux locs with alternating
kinks, made by loosely
wrapping the textured hair
around the braid.

AVAILABLE COLORS:
1, 1B, 2, 4, SM1B/27, SM1B/30,
SM1B/BG



**2X WATER WAVE
LOCS 18"**

Locs style made using water
wave curl pattern.

AVAILABLE COLORS:
1, 1B, 2, 4, 27, 30, BG, T1B/27,
T1B/30, T1B/BG



**3X TWIST LOCS
8", 10", 12"**

2 curly strands are twisted
tightly to give the locs style
with free formed shapes.

AVAILABLE COLORS:
1, 1B, 2, 4, 27, 30, BG, SM1B/27,
SM1B/30, SM1B/BG



100% PREMIUM FIBER | LULUTRESS®

WATER WAVE



#TRENDING

For Those That Prefer To Create Their Own Unique, Bespoke Locs, WATER WAVE is The #1 Texture Of Choice.

Style Shown:
WATER WAVE 24"
Color Shown: 1, T1B/30



- PERFECT FOR PASSION TWISTS & BUTTERFLY LOCS
- SOFT TEXTURE, NATURAL LUSTER
- LONG-LASTING NATURAL LOOK

AFRO TWIST



Style Shown:
3X AFRO TWIST 24"
Color Shown: 1B

PERFECT FOR
TWISTS & LOCS

Style Shown:
3X AFRO TWIST 16"
Color Shown: 1



- PRE FLUFFED & PRE SEPARATED
- GOOD FOR TWIST & LOC STYLES

This Pre-fluffed and pre-separated version of spring twists is lightweight, soft and easy to use.

AVAILABLE COLORS:
1, 1B, 2, 4, 27, 30, 350, 613, 99J, BG, M51, SM1B/27, SM1B/30, SM1B/BG

X-Pression®

LESS WINTER BLUES MORE SUMMER GLOW

Missin' that summer mood? Sensationnel® has you covered! Choose from a variety of colors, styles and textures from our braiding hair lines, Ruwa® and X-pression® by Sensationnel®.



1.



2.



RUWA®

Made With Aquatex® Fiber From Kanekalon®



3.



4.

1. 3X X-PRESSION

PRE-STRETCHED BRAID 58"

AVAILABLE COLORS: 1, 1B, 2, 4, 27, 30, 350, 613, 99J, BG, BLUE, PURPLE, RAINBOW, RED, SM1B/27, SM1B/30, SM1B/350, SM1B/BG, T1B/27, T1B/30, T1B/613, T1B/BG, T1B/BLU, T1B/EMERALD, T1B/MUSTARD, T1B/PUR, T1B/RED, 3T1B/DBLUE/LBLUE, 3T1B/LPINK/BLUE, 3T1B/MINT/LMINT, 3T1B/PURPLE/PINK, **3T2/27/613, 3T2/30/27, 3TBLUE/LBLUE/LAVENDER, 3TPURPLE/PINK/LPINK**

2. 2X X-PRESSION

PRE-STRETCHED BRAID 48"

AVAILABLE COLORS: 1, 1B, 2, 4, 27, 30, 33, 350, 613, 99J, BG, BLUE, LILAC, MATTE GRAY, PERIWINKLE, RAINBOW, RED, VINTAGE ROSE, M44, M51, M1B/27, M1B/30, M1B/BG, SM1B/27, SM1B/30, SM1B/33, SM1B/350, SM1B/BG, T1B/27, T1B/30, T1B/613, T1B/BG, T1B/BLU, T1B/EMERALD, T1B/MUSTARD, T1B/PUR, T1B/RED, 3T1B/DBLUE/LBLUE, 3T1B/LPINK/BLUE, 3T1B/MINT/LMINT, 3T1B/PURPLE/PINK, **3T2/27/613, 3T2/30/27, 3TBLUE/LBLUE/LAVENDER, 3TPURPLE/PINK/LPINK**

3. 3X RUWA

PRE-STRETCHED BRAID 24"

AVAILABLE COLORS: 1, 1B, 2, 4, 27, 30, 33, 350, 39J, 60, 613, 99J, BG, BLUE, DKPURPLE, LILAC, MATTE GRAY, NBLUE, NGREEN, NLIME, NORANGE, NPINK, NPURPLE, PERIWINKLE, PURPLE, RED, VINTAGE ROSE, **M44, M51, SM1B/27, SM1B/30, SM1B/33, SM1B/350, SM1B/60, SM1B/BG, SM4/613, SM27/613, SM30/27, SM1B/27/613, SM1B/30/27, SM1B/BLUE/PURPLE, SM1B/DBLUE/LBLUE, SM1B/DBLUE/YELLOW, SM1B/MINT/LMINT, SM1B/PURPLE/PINK, SM1B/RED/FIRE RED, SMGREEN/NLIME, SMORANGE/NLIME**

4. 3X RUWA

PRE-STRETCHED BRAID 36"

AVAILABLE COLORS: 1, 1B, 2, 4, 27, 30, 350, 613, BG, RED, SM1B/27, SM1B/30, SM1B/BG

Made With Aquatex® Fiber From Kanekalon®

RUWA®



kid-friendly **BRAIDING**

- WATER REPELLENT
- LIGHTWEIGHT
- SOFT ON THE HANDS
- JUST THE RIGHT LENGTH



Model Style: 3X KIDS PRE-STRETCHED 12" Color: 1B

#SensationnelHair
©2022 Hair Zone, Inc.



WWW.SENSATIONNEL.COM

Aquatex® & Kanekalon® are registered trademarks of Kanekalon Corporation. © 2022 Kanekalon Corporation. All rights reserved.