

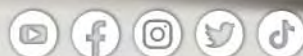


SENSATIONNEL®

NOV/DEC 2022

Holiday
EDITION

#SensationnelHair



EMPIRE[®] Bundles

100% VIRGIN HUMAN HAIR

WEFTED BUNDLES

AVAILABLE STYLES:

**STRAIGHT • BODY WAVE
DEEP • LOOSE DEEP**

AVAILABLE LENGTHS:

**10", 12", 14", 16", 18",
20", 22", 24", 26", 28"**

AVAILABLE COLORS
(May Vary By Length & Texture):

**NATURAL,
NATURAL BLACK,
613, DARK RED**

4X4 HD LACE CLOSURES

AVAILABLE STYLES:

**STRAIGHT • BODY WAVE
DEEP 12" • LOOSE DEEP 12"**

AVAILABLE LENGTHS:

10", 12", 14", 16", 18"
(DEEP & LOOSE DEEP only available in 12")

AVAILABLE COLORS
(May Vary By Length & Texture):

**NATURAL, NATURAL BLACK,
613, DARK RED**

13X4 HD LACE FRONTALS

AVAILABLE STYLES:

**STRAIGHT
BODY WAVE**

AVAILABLE LENGTHS:

10", 12", 14", 16", 18"

AVAILABLE COLORS
(May Vary By Length & Texture):

**NATURAL,
NATURAL BLACK**



Style Shown:
STRAIGHT 28"

Color:
NATURAL
(Bleached and
Dyed to Orange)

IN THIS ISSUE...

100% VIRGIN HUMAN HAIR
2-3 Empire[®] Bundles
4-5 Bare & Natural[®] | Bundle Deals

100% PREMIUM FIBER
6-7 Cloud 9[™] | What Lace[®]
8-9 Cloud 9[™] | Braided Lace Wig
10-11 What Lace[®] | Butta lace[®]
12 Vice[®] | HD Lace Wig
13 Dashly[®] | Lace Front Wig
14 Lulu Pony[®]
15 Instant Up & Down[®]
20 Shear Muse[®] | Red Krush[®]

HD LACE WIGS
6-7 Cloud 9[™] | What Lace[®]
8-9 Cloud 9[™] | Braided Lace Wig
10-11 What Lace[®] | Butta lace[®]
12 Vice[®] | HD Lace Wig
13 Dashly[®] | Lace Front Wig
20 Shear Muse[®] | Red Krush[®]

HAIR PIECES & CLOSURES
2-3 Empire[®] Bundles
4-5 Bare & Natural[®] | Bundle Deals
14 Lulu Pony[®]
15 Instant Up & Down[®]

HALF WIGS
15 Instant Up & Down[®]

BRAIDING
8-9 Cloud 9[™] | Braided Lace Wig
16-17 X-pression[®]
18 Lulutress[®]
19 Ruwa[®]



BLEACH/DYE PERM HEAT SAFE

CHANGE *with* the SEASONS

Empire[®] Bundles can be **BLEACHED**
and **DYED** to satisfy your desire for
UNIQUE COLORS & STYLES.

BARE&natural
**3X MULTI
 VIRGIN
 HAIR**



New
 TEXTURE

COLOR: **DEEP**
 COLOR SHOWN: **NATURAL BLACK**



New
 TEXTURE

COLOR: **LOOSE DEEP**
 COLOR SHOWN: **NATURAL BLACK**

3 BUNDLES +
13X4
frontal



WELL CRAFTED

Soft 100% Virgin Human Hair carefully and neatly sewn on a double weft for a full look.



HEALTHY HAIR

Sourced from only the highest quality unprocessed human hair, for natural luster and movement.



13x4 HD LACE FRONTAL

Virtually Undetectable HD Lace Frontal with 13x4 parting area. 100% hand-tied and pre-plucked with baby hairs along the hairline.

New!

-Cloud9-
SWISS LACE WIG

whatlace?

HAIRLINE ILLUSION LACE WIG



HDlace
KEEP THEM GUESSING



SORAYA



GORA



JALISA



FEATURES:

- 13" X 6", Ear-to-Ear With 6" Deep Hand-tied.
- Pre-plucked, Natural Density.
- Undetectable Flawless Hairline.
- Perfect Hairline With Baby Hair Along The Hairline.
- Pre-customized Unit.
- Protective Style; No Leave-out Necessary.



SORAYA

Available colors:
1, 1B, 2,
BALAYAGE CARAMEL,
BALAYAGE CHOCOLATE,
BALAYAGE GOLD,
BALAYAGE HAZELNUT,
BALAYAGE MOCHA,
T2/27, T2/30



CORA

Available colors:
1, 1B, 2, BALAYAGE CARAMEL,
BALAYAGE CHOCOLATE,
BALAYAGE GOLD,
BALAYAGE HAZELNUT,
BALAYAGE MOCHA,
T1B/4, T2/350



JALISA

Available colors:
1, 1B, 2, BALAYAGE CARAMEL,
BALAYAGE GOLD,
BALAYAGE HAZELNUT,
FLAMBOYAGE AUBURN,
FLAMBOYAGE BLONDE,
FLAMBOYAGE CHOCOLATE,
FLAMBOYAGE MOCHA,
FLAMBOYAGE SAND

100% PREMIUM FIBER | WHAT LACE?®

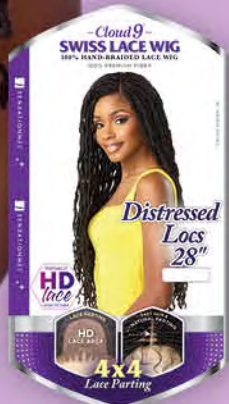
7.

-Cloud 9-
SWISS LACE WIG



**DISTRESSED
LOCS 40"**

AVAILABLE COLORS:
1, 1B, 2, 613,
SM1B/27, SM1B/30,
SM1B/BG



**DISTRESSED
LOCS 28"**

AVAILABLE COLORS:
1, 1B, 2, 613,
SM1B/27, SM1B/30,
SM1B/BG



New!



**BOX BRAID
X-LARGE 50"**

AVAILABLE COLORS:
1, 1B, 2, 613,
T1B/27, T1B/30,
T1B/BG



**BOX BRAID
X-LARGE 36"**

AVAILABLE COLORS:
1, 1B, 2, 613,
T1B/27, T1B/30,
T1B/BG



VIRTUALLY
HD
lace
UNDETECTABLE

New!

100% PREMIUM FIBER | CLOUD 9™ 4X4 BRAIDED LACE WIGS

9.



butta lace®

100% PREMIUM FIBER

Glamorous units CONSUMERS LOVE.

Perfect for any occasion, Butta Lace® offers natural voluminous layers with virtually undetectable HD LACE that never disappoints. This season, enjoy our Butta Lace® glam looks consumers simply can't get enough of.



New!
UNIT
27



BUTTA UNIT 27

AVAILABLE COLORS:
1, 1B, 2, 613, BALAYAGE CARAMEL,
BALAYAGE CHOCOLATE, **BALAYAGE GOLD**,
BALAYAGE HAZELNUT, BALAYAGE MOCHA,
T2/27, T2/30



New!
UNIT
28



BUTTA UNIT 28

AVAILABLE COLORS:
1, 1B, 2, 613,
BALAYAGE CARAMEL,
BALAYAGE CHOCOLATE,
BALAYAGE GOLD,
BALAYAGE HAZELNUT,
BALAYAGE MOCHA,
T2/27, T2/30



New!
UNIT
29



BUTTA UNIT 29

AVAILABLE COLORS:
1, 1B, 2, BALAYAGE CARAMEL,
BALAYAGE GOLD, BALAYAGE LATTE,
CHUNKY HIGHLIGHT 27,
CHUNKY HIGHLIGHT 30,
CHUNKY HIGHLIGHT BLONDE,
FLAMBOYAGE BLONDE,
FLAMBOYAGE CHOCOLATE,
FLAMBOYAGE MOCHA



New!
UNIT
30



BUTTA UNIT 30

AVAILABLE COLORS:
1, 1B, 2, BALAYAGE CARAMEL,
BALAYAGE GOLD, **BALAYAGE LATTE**,
CHUNKY HIGHLIGHT 27,
CHUNKY HIGHLIGHT 30,
CHUNKY HIGHLIGHT BLONDE,
FLAMBOYAGE BLONDE,
FLAMBOYAGE CHOCOLATE,
FLAMBOYAGE MOCHA



New!

VICE

DASHLY

100% PREMIUM FIBER | DASHLY®



VICE UNIT 14

Available Colors:
1, 1B, 2, BALAYAGE GOLD, BALAYAGE PLATINUM, FLAMBOYAGE MOCHA, **FLAMBOYAGE SAND**, LT27/1, LT613/BLUE, LT613/PINK, TIP DYE HOT PINK, TIP DYE PURPLE



VICE UNIT 13

Available Colors:
1, 1B, 2, BALAYAGE CARAMEL, BALAYAGE GOLD, BALAYAGE HAZELNUT, **BALAYAGE PLATINUM**, FLAMBOYAGE AUBURN, FLAMBOYAGE BLONDE, FLAMBOYAGE CHOCOLATE, FLAMBOYAGE MOCHA, FLAMBOYAGE SAND



LACE UNIT 25

Available Colors:
1, 1B, 2, BALAYAGE CARAMEL, BALAYAGE CHOCOLATE, BALAYAGE GOLD, BALAYAGE HAZELNUT, BALAYAGE MOCHA, CHUNKY HIGHLIGHT 27, **CHUNKY HIGHLIGHT 30**, CHUNKY HIGHLIGHT BLONDE, T6/27613



LACE UNIT 24

Available Colors:
1, 1B, 2, BALAYAGE CARAMEL, BALAYAGE CHOCOLATE, BALAYAGE GOLD, BALAYAGE HAZELNUT, BALAYAGE MOCHA, **CHUNKY HIGHLIGHT 27**, CHUNKY HIGHLIGHT 30, CHUNKY HIGHLIGHT BLONDE, T6/27613



New!



MAYA

Color Shown: F4/27



DODO

Color Shown: T2/613



NIKI

Color Shown: 1B



lulu pony

QUICK, SIMPLE & STYLISH

Since its launch the Lulu Pony® brand has been a hit, serving up classic, no-fail ponytail styles, that are the perfect choice for all and every occasion.

Available colors:

1, 1B, 2, 4, F1B/30, F4/27, T2/27, T2/30, T2/613, T2/BG

New!



HALF-WIG



PONY-WRAP



UP-DO



UD 14

Color Shown: BALAYAGE GOLD

Instant **UP & DOWN**

PACK INCLUDES
1 HALF WIG
1 PONY WRAP

SCAN CODE FOR HOW-TO



Available Basic Colors: 1, 1B, 2, 4



100% PREMIUM FIBER | INSTANT UP & DOWN®

15.

100% Kanekalon®

X-Pression®

Create a wide variety of holiday hairdos with Sensationnel® X-PRESSION® Braid. It's easy to see why X-pression® braiding hair is any stylist's top choice. X-pression® is flame retardant, hot-water set and made with soft, lightweight 100% Kanekalon® fibers. With lengths from 28 to 96 inches, and over 40 color options to explore: basics, neons, pastels, 2 and 3 toned colors and more!



Experience X-Pression® COLORS



2X PRE-STRETCHED BRAID 48"

Available Colors:



3X PRE-STRETCHED BRAID 58"

Available Colors:



lulutress®



EVERY SEASON
IS BRAID SEASON

SCAN ME!



Style Shown: (Pre-Looped) 3X DISTRESSED LOCS 40" Color: 1B

LULUTRESS® is your go-to curly hair to achieve all the popular styles that you know and love like **passion twist**, **goddess locs**, **butterfly locs**, and **bohemian locs**. Products come in basic & special colors, made with heat safe premium fiber.

RUWA®

Made With Aquatex® Fiber From Kanekalon®



SEASON

Style Shown: 3X PRE-STRETCHED 18" and 24" Color: 1B and BLUE OMBRE

RUWA® braiding hair is made with Aquatex® fiber from Kanekalon® which enables the hair to repel water for **Extreme Fast Drying**, so that you can maintain your braided hairstyles and avoid excess product buildup, itch and frizz due to not washing your hair or not doing so properly.

SCAN ME!



100% KANEKALON® AQUATEX® FIBER | RUWA®

19.



HDlace
KEEP THEM GUESSING

HOLIDAY REDS THAT SLAY.

Salon Inspired Cut & Color by Shear Muse®

Available Colors For All Styles:
1, 1B, 2, APPLE RED,
CARROT RED, CRIMSON RED,
FIRE RED, GINGER RED, WINE RED

