



SENSATIONNEL®

SEP/OCT 2023

*Autumn*  
EDITION

#SensationnelHair    





# IN THIS ISSUE...

## 100% HUMAN HAIR

- 4-5 Empire® Wig
- 6 Empire® | Bulk
- 7 Empire® | Clip-Ins

## HUMAN HAIR & PREMIUM FIBER BLEND

- 8-9 Cloud 9™ | What Lace®
- 11 What Lace® | Butta Lace®

## 100% PREMIUM FIBER

- 8 Cloud 9™ | What Lace®
- 10-11 Butta Lace® 360°
- 12-13 Bare Lace®
- 14-17 Dashly® | HD Lace Wig
- 18 Vice® | HD Lace Wig
- 19 Dashly® | Lace Part Wig
- 20-21 Shear Muse® | Empress®
- 22-23 Lulu Pony®

## LACE WIGS

- 8-9 Cloud 9™ | What Lace®
- 10-11 Butta Lace® 360°
- 11 What Lace® | Butta Lace®
- 12-13 Bare Lace®
- 14-17 Dashly® | HD Lace Wig
- 18 Vice® | HD Lace Wig
- 20-21 Shear Muse® | Empress®

## FULL WIGS & HALF WIGS

- 4-5 Empire® Wig
- 19 Dashly® | Lace Part Wig

## CLOSURES & HAIR PIECES

- 7 Empire® | Clip-Ins
- 22-23 Lulu Pony®

## BRAIDING HAIR

- 2-3 Ruwa®
- 6 Empire® | Bulk
- 24 X-Pression®

# RUWA®

Made With Aquatex® Fiber From Kanekalon®





New!

# EMPIRE WIG

100% HUMAN HAIR

## SALT & PEPPER

- SOFT & SMOOTH TEXTURE
- LONG LASTING CURL RETENTION
- TANGLE FREE & SHED FREE
- FLEX-CAP FOR SUPERIOR COMFORT
- HEAT SAFE HUMAN HAIR



**BLISS**  
Available Colors:  
1, 1B, 2, 27, 30, 350, BG,  
F1B/30, M280, M44



**DENIA**  
Available Colors:  
1, 1B, 2, 613, HL1B/44,  
HL280/44, T2/27, T2/30,  
T2/350, T2/RED



**EVIE**  
Available Colors:  
1, 1B, 2, 27, 30, 350, 613,  
HL1B/44, HL280/44, RED



100% HUMAN HAIR | EMPIRE® WIG

5.



Best For:  
**BOHO Braids**  
& Knotless Styles

# EMPIRE®

100% HUMAN HAIR

## BULK

*New!*



Available Styles: **WATER WAVE BULK 18"**, **DEEP BULK 18"** & **DEEP BULK 22"**  
Available Colors: 1, 1B, 2, 27, 30, 350, BG

# EMPIRE®

100% HUMAN HAIR

Butterfly Clip In™  
PATENT PENDING

- ADDS VOLUME & LENGTH
- INFUSED WITH ARGAN OIL
- COMFORTABLE & SECURE
- FLEXIBLE LACE WEFT



**STRAIGHT 14"**

Available Color:  
1, 1B, 2, 4, T2/27,  
T2/30, T2/BG



**STRAIGHT 18"**

Available Color:  
1, 1B, 2, 4, 6, 30,  
530, 613, 18/22,  
27/30, 27/613,  
4/30, 4/613,  
T2/27, T2/30,  
T2/613, T2/BG



New Butterfly Clip In™ lifts open like butterfly wings and grips hair from the side.

## 7 PIECE CLIP-IN HAIR EXTENSIONS

1 PIECE 10" WEFT | 1 PIECE 7" WEFT | 1 PIECE 5" WEFT | 2 PIECES 3.5" WEFTS | 2 PIECES 2" WEFTS

100% HUMAN HAIR | EMPIRE® 7 PIECE CLIP-IN



# FASHIONABLE FALL COLORS



AVAILABLE COLORS MAY VARY BY STYLE AND RETAILER

-Cloud9-  
**whatlace?**  
WITH NATURAL DENSITY HAIRLINE  
100% Premium Fiber



**QUIANA**  
100% PREMIUM FIBER

Available colors: 1, 1B, 2, LIGHT ASH BROWN, SECRET HIGHLIGHT BERRY, SECRET HIGHLIGHT BUTTERY BLONDE, SECRET HIGHLIGHT CHESTNUT, SECRET HIGHLIGHT GINGER, SECRET HIGHLIGHT GOLDEN WALNUT, SECRET HIGHLIGHT HONEY, SECRET HIGHLIGHT LIGHT ASH BROWN, SECRET HIGHLIGHT PLATINUM



-Cloud9-  
**whatlace?**  
WITH NATURAL DENSITY HAIRLINE  
Human Hair & Premium Fiber Blend

New!  
STYLES



**MARIELLA 26"**  
HUMAN HAIR & PREMIUM FIBER BLEND

Available colors: 1, 1B, 2, COLOR MELT BLONDE, COLOR MELT CARAMEL, COLOR MELT CHOCOLATE, COLOR MELT GOLD, COLOR MELT HAZEL, COLOR MELT MOCHA



**SHIYANA 14"**  
HUMAN HAIR & PREMIUM FIBER BLEND

Available colors: 1, 1B, 2, DIMENSIONAL HIGHLIGHT APPLE RED, DIMENSIONAL HIGHLIGHT BUTTERY BLONDE, DIMENSIONAL HIGHLIGHT CREAM BLONDE, DIMENSIONAL HIGHLIGHT GINGER, DIMENSIONAL HIGHLIGHT GOLDEN BLONDE, DIMENSIONAL HIGHLIGHT GOLDEN BRONZE, DIMENSIONAL HIGHLIGHT PLATINUM



**TALISA 12"**  
HUMAN HAIR & PREMIUM FIBER BLEND

Available colors: 1, 1B, 2, 613, COLOR MELT BLONDE, COLOR MELT CARAMEL, COLOR MELT CHOCOLATE, COLOR MELT GOLD, COLOR MELT HAZEL, COLOR MELT MOCHA

HUMAN HAIR & PREMIUM FIBER BLEND | WHAT LACE?®



New!  
PRODUCT

GLUE  
LESS  
LACE WIG

**BUTTA 360  
UNIT 2**  
Color Shown:  
T4/BUTTERSCOTCH BLONDE

# 360° butta lace®

100% PREMIUM FIBER

GLUE  
LESS  
LACE WIG

**BUTTA 360  
UNIT 1**  
Color Shown: 1B

NEW STYLE



HUMAN HAIR &  
PREMIUM FIBER BLEND



### VOLUME CURL 22"

Available Colors:  
1, 1B, 2, BALAYAGE ASH BLONDE,  
BALAYAGE COPPER, BALAYAGE LATTE,  
BALAYAGE MOCHA, BALAYAGE PLATINUM,  
LIGHT ASH BROWN

VIRTUALLY  
**HD  
lace**  
UNDETECTABLE



**360°  
HD LACE HAND-TIED ALL AROUND**

AVAILABLE COLORS FOR BOTH STYLES:  
1, 1B, 2, BABYLIGHTS BERRY, BABYLIGHTS CARAMEL,  
BABYLIGHTS CHESTNUT, BABYLIGHTS CINNAMON,  
BABYLIGHTS HONEY, BABYLIGHTS PLATINUM,  
LIGHT ASH BROWN, T4/BUTTERSCOTCH BLONDE,  
T4/CHESTNUT BLONDE

**360° HD LACE  
GLUELESS  
PRE-PLUCKED**



100% PREMIUM FIBER BUTTA LACE® 360° • HUMAN HAIR & PREMIUM FIBER BLEND BUTTA LACE®

11.



New!  
PRODUCT

# bare|lace™

GLUELESS LACE WIG

STYLE NAME: 13 X 6 UNIT 1

STYLE NAME: 13 X 6 UNIT 2

STYLE NAME: 13 X 6 UNIT 3



Color Shown:  
SECRET HIGHLIGHT GOLDEN WALNUT

Color Shown:  
1B

Color Shown:  
LIGHT ASH BROWN

**SECRET HIGHLIGHTS:** Hidden highlight strands behind the ears that are visible with movement.

Available Colors For ALL STYLES:

- 1, 1B, 2, LIGHT ASH BROWN,
- SECRET HIGHLIGHT BERRY,
- SECRET HIGHLIGHT BUTTERY BLONDE,
- SECRET HIGHLIGHT CHESTNUT,
- SECRET HIGHLIGHT GINGER,
- SECRET HIGHLIGHT GOLDEN WALNUT,
- SECRET HIGHLIGHT HONEY,
- SECRET HIGHLIGHT LIGHT ASH BROWN,
- SECRET HIGHLIGHT PLATINUM



100% PREMIUM FIBER | BARE LACE™

STYLE NAME: 13 X 6 UNIT 4



New! BARE LUXE LACE

“Lace so thin it looks like skin”

**BARE LUXE LACE™** Features:  
**20% LARGER GRID PATTERN + 40% THINNER LACE DESIGN**  
to show more clear skin compared to generic lace

**LIGHT-DIFFUSING** Lace material deflects light for a non-reflective, **BARELY VISIBLE** finish

**NEW** lace technology **BEYOND HD & TRANSPARENT**, Barely allowing any lace visibility



**13 X 6 LACE VIEW**  
Clean, **PRE-PLUCKED** Bare Luxe Lace™ area with baby hairs, saves time and effort.

**HAIRLINE VIEW**  
Thinner, lighter lace for a more transparent melting on the skin.

**CAP VIEW**  
Breathable mesh cap with **WIG BAND** and silicon lining for secure **GLUELESS** installs.



Color Shown: SECRET HIGHLIGHT LIGHT ASH BROWN

13.



# THE LATEST FALL LOOKS *from Dashly®...*

Popular Dashly® Lace Front always has you trending. From loose waves to springier curls, be ready in a dash with the latest from Dashly®. Try our new Butterfly Cut styles available with new must-have face framing colors. This autumn, add these new wig stash essentials to your collection.

# dashly® *Lace Front*

100% PREMIUM FIBER | DASHLY® LACE FRONT



**LACE UNIT 34**  
Color Shown: 1

*New!*



**LACE UNIT 35**  
Color Shown: 1B

*New!*



**LACE UNIT 36**  
Color Shown: CHUNKY HIGHLIGHT BLONDE

*New!*



**LACE UNIT 37**  
Color Shown: CHUNKY HIGHLIGHT 27

*New!*



**LACE UNIT 38**  
Color Shown: 1B

*New!*



**LACE UNIT 39**  
Color Shown: 1

AVAILABLE COLORS FOR LACE UNIT 34 AND LACE UNIT 35 :  
1, 1B, 2, BALAYAGE CARAMEL, BALAYAGE CHOCOLATE, BALAYAGE GOLD, BALAYAGE HAZELNUT, BALAYAGE LATTE, BALAYAGE MOCHA, CHUNKY HIGHLIGHT 27, CHUNKY HIGHLIGHT 30, CHUNKY HIGHLIGHT BLONDE

AVAILABLE COLORS FOR LACE UNIT 36, LACE UNIT 37, AND LACE UNIT 38 :  
1, 1B, 2, BALAYAGE COPPE R, BALAYAGE PLATINUM, CHUNKY HIGHLIGHT 27, CHUNKY HIGHLIGHT 30, C HUNKY HIGHLIGHT BLONDE, FACE FRAME 1/HOT PINK, FACE FRAME 1B/350, FACE FRAME 1B/PURPLE, LIGHT ASH BROWN

AVAILABLE COLORS FOR LACE UNIT 39 :  
1, 1B, 2, BALAYAGE CHOCOLATE, BALAYAGE COPPER, BALAYAGE LATTE, BALAYAGE PLATINUM, CHUNKY HIGHLIGHT 27, CHUNKY HIGHLIGHT 30, CHUNKY HIGHLIGHT BLONDE, FLAMBOYAGE BLONDE, FLAMBOYAGE SAND



New!  
PRODUCT

# dashly.<sup>®</sup> Lace Front



(Left Style)  
**SP LACE UNIT 2**  
Color Shown: HL 280/44

(Right Style)  
**SP LACE UNIT 3**  
Color Shown: HL 1B/280

## Salt & Pepper COLOR PALETTE



Available colors vary by style.

### SP LACE UNIT 1



Color Shown: HL 280/44

### SP LACE UNIT 2



## Salt & Pepper

### SP LACE UNIT 3



Color Shown: HL 1B/280  
Color Shown: HL 280/44

### SP LACE UNIT 4



• READY-TO-WEAR TRENDING STYLES • MADE WITH HEAT RESISTANT FIBER  
• MULTI-FACETED COLOR • DRESS IT UP OR DRESS IT DOWN

**SP LACE UNIT 1 AVAILABLE COLORS:** 1, 1B, 2, BALAYAGE COPPER, BALAYAGE LATTE, CHUNKY HIGHLIGHT 30, CHUNKY HIGHLIGHT BLONDE, FLAMBOYAGE BLONDE, FLAMBOYAGE CHOCOLATE, HL 1B/280, HL 280/44, M44  
**SP LACE UNIT 2, 3, 4 AVAILABLE COLORS:** 1, 1B, 2, BALAYAGE COPPER, BALAYAGE LATTE, CHUNKY HIGHLIGHT 30, CHUNKY HIGHLIGHT BLONDE, FLAMBOYAGE CHOCOLATE, FLAMBOYAGE MOCHA, HL 1B/280, HL 280/44, M44

100% PREMIUM FIBER | DASHLY<sup>®</sup> LACE FRONT SALT & PEPPER



Vice  
unit 16

*New!*  
Vice  
unit 18

Vice  
unit 17



# VICE® HD LACE WIG



**VICE UNIT 18** Available Colors: 1, 1B, 2, BALAYAGE ASH BLONDE, BALAYAGE COPPER, BALAYAGE PLATINUM, **FACE FRAME 1/HOT PINK**, FACE FRAME 1B/350, FACE FRAME 1B/PURPLE, FACE FRAME 27/1, FACE FRAME 613/LIGHT PINK, LIGHT ASH BROWN



**VICE UNIT 17** Available Colors: 1, 1B, 2, BALAYAGE GOLD, BALAYAGE PLATINUM, COLOR BLOCK 1B/27, COLOR BLOCK 1B/350, LT27/1, LT613/PINK, TIP DYE HOT PINK, **HALF PIECE CARAMEL**, HALF PIECE PLATINUM



**VICE UNIT 16** Available Colors: 1, 1B, 2, BALAYAGE CHOCOLATE, BALAYAGE GOLD, **BALAYAGE MOCHA**, FUCHSIA, LT613/BLUE, LT613/PINK, T4/CHESTNUT BLONDE, TIP DYE HOT PINK, TIP DYE PURPLE

*New!*

New Lace Parts!

**READY,  
SET,  
Dash!**

*New!*



# dashly® Lace Part Wig



(Left Style)  
**LP UNIT 5** Color Shown: 1B

(Right Style)  
**LP UNIT 4** Color Shown: 613

Available Colors: 1, 1B, 2, 613, T2/27, T2/30, T2/BG, T2/COPPER

100% PREMIUM FIBER | DASHLY® LACE PART

19.



**RED KRUSH®**

Popular  
STYLES

**DANISHA**



**MEET DANISHA...**

Her waist-length, layered, wavy strands will bring out your fun, flirty, and feminine side. With a sizzling variety of reds, she's full of personality.

Color Shown: APPLE RED



Available Colors: 1, 1B, 2, APPLE RED, CARROT RED, CRIMSON RED, FIRE RED, GINGER RED, WINE RED



**HDlace**  
KEEP THEM GUESSING



Available Colors: BABY BLUE, BABY PINK, BABY PURPLE, COLOR ME, MINT FROST, NEON FIRE, NEON FOREST, NEON LEMON, NEON LIME, NEON PINK, NEON PURPLE, NEON ROYAL BLUE, NEON TANGERINE, TEAL GREEN



From:  
**EMPRESS**  
LACE WIG.  
LACE FRONT EDGE

**SHARITTA**



**MEET SHARITTA...**

Her sultry waves are sure to entice and her expansive color is sure to turn heads. Why be basic, when you can be bold!

Color Shown: NEON TANGERINE



100% PREMIUM FIBER | SHEAR MUSE® LACE FRONT WIG



New!

**SANA**  
Color Shown: 1B

**RAYA**  
Color Shown: 2

**NISI**  
Color Shown: T2/PURPLE

New  
COLORS  
AVAILABLE for  
NISI STYLE



**lulu pony**

QUICK, SIMPLE & STYLISH



**SANA, RAYA**  
Available colors: 1, 1B, 2, 4, F1B/30,  
T2/27, T2/30, T2/BG, T2/COPPER

**NISI**  
Available colors: 1, 1B, 2, 4, T2/27,  
T2/30, T2/613, T2/BLUE,  
T2/COPPER, T2/HOT PINK,  
T2/PURPLE, T2/RED



100% PREMIUM FIBER | LULU PONY™





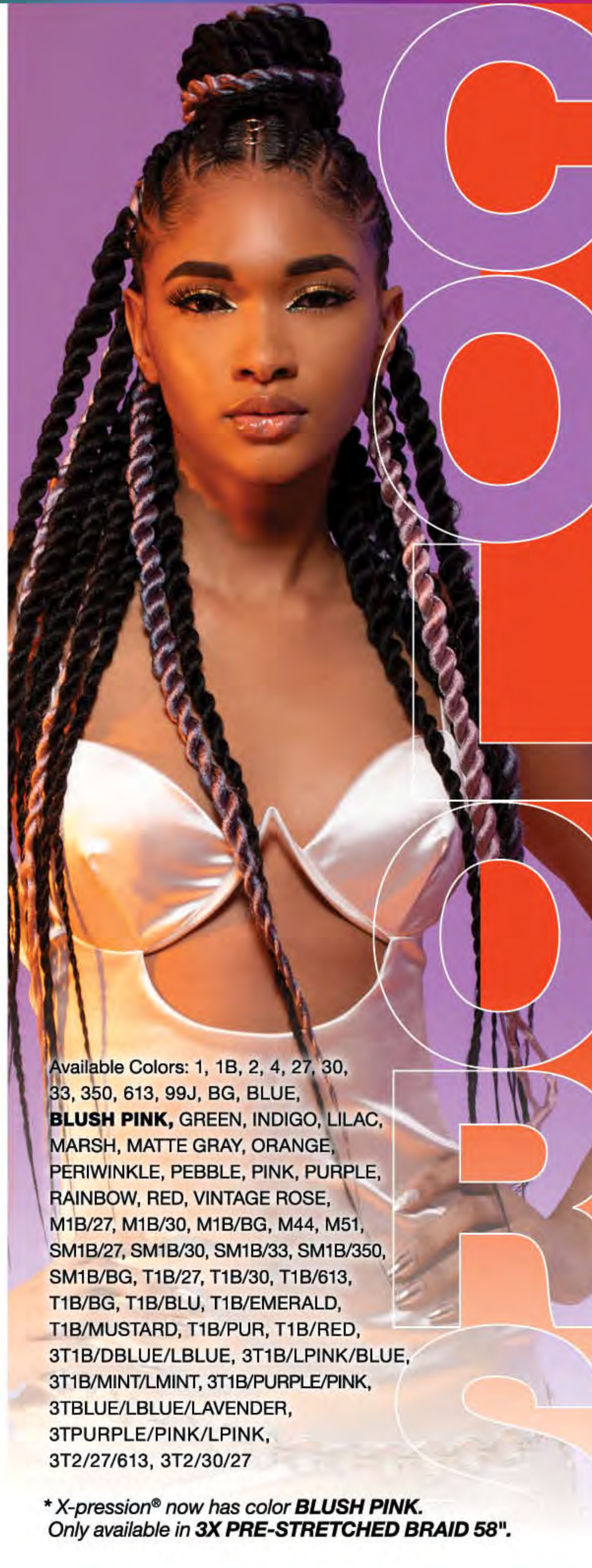
# X-pression®

100% Kanekalon®

X-pression® offers lengths from 28 to 96 inches, with over 40 color options to explore. Ranging from basics, neons, pastels, 2 and 3 toned colors, plus more, Sensationnel® X-pression® braiding hair is a stylist's top choice!

\* Colors vary by style. Contact your sales rep for availability details.

1	1B	2	4
27	30	33	350
613	99J	BG	BLUE
BLUSH PINK <b>NEW</b>	GREEN	INDIGO	LILAC
MARSH	MATTE GRAY	ORANGE	PERIWINKLE
PEBBLE	PINK	PURPLE	RAINBOW
RED	VINTAGE ROSE	M1B/27	M1B/30
M1B/BG	M44	M51	SM1B/27
SM1B/30	SM1B/33	SM1B/350	SM1B/BG
T1B/27	T1B/30	T1B/613	T1B/BG
T1B/BLU	T1B/EMERALD	T1B/MUSTARD	T1B/PUR
T1B/RED	3T1B/DBLUE/LBLUE	3T1B/LPINK/BLUE	3T1B/MINT/LMINT
3T1B/PURPLE/PINK	3TBLUE/LBLUE/LAVENDER	3TPURPLE/PINK/LPINK	
3T2/30/27	3T2/27/613		



Available Colors: 1, 1B, 2, 4, 27, 30, 33, 350, 613, 99J, BG, BLUE, **BLUSH PINK**, GREEN, INDIGO, LILAC, MARSH, MATTE GRAY, ORANGE, PERIWINKLE, PEBBLE, PINK, PURPLE, RAINBOW, RED, VINTAGE ROSE, M1B/27, M1B/30, M1B/BG, M44, M51, SM1B/27, SM1B/30, SM1B/33, SM1B/350, SM1B/BG, T1B/27, T1B/30, T1B/613, T1B/BG, T1B/BLU, T1B/EMERALD, T1B/MUSTARD, T1B/PUR, T1B/RED, 3T1B/DBLUE/LBLUE, 3T1B/LPINK/BLUE, 3T1B/MINT/LMINT, 3T1B/PURPLE/PINK, 3TBLUE/LBLUE/LAVENDER, 3TPURPLE/PINK/LPINK, 3T2/27/613, 3T2/30/27

\* X-pression® now has color **BLUSH PINK**. Only available in **3X PRE-STRETCHED BRAID 58"**.