



SENSATIONNEL®

NOV/DEC 2023

Holiday
EDITION

#SensationnelHair    

STYLE NAME: 13x6 Unit 2



barel|ace™

GLUELESS LACE WIG

STYLE NAME: 13x6 Unit 3

STYLE NAME: 13x6 Unit 4



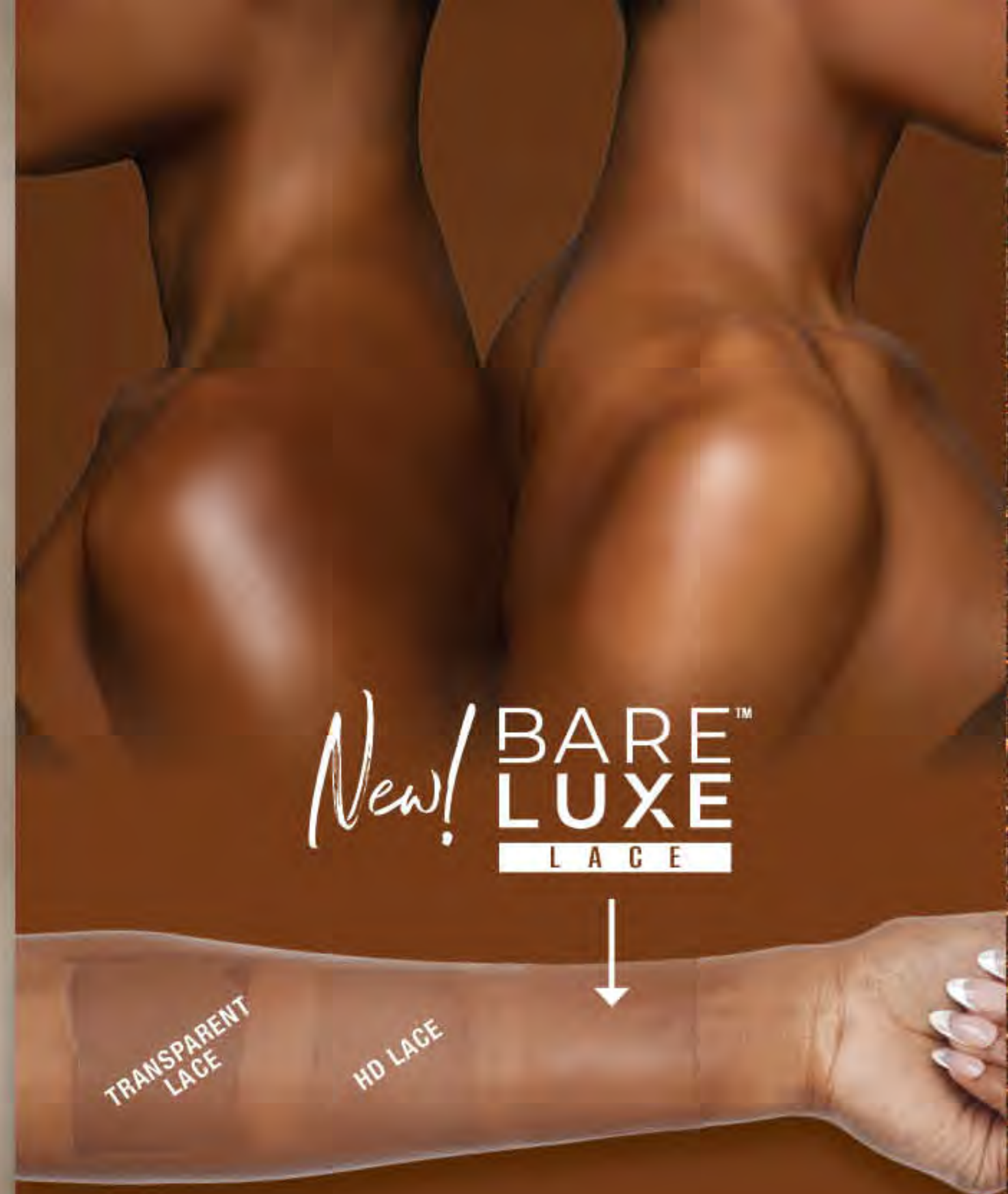
COLOR SHOWN: 1B

STYLE NAME: 13x6 Unit 1



COLOR SHOWN:
SECRET HIGHLIGHT GOLDEN WALNUT

Available Colors For ALL STYLES:
1, 1B, 2, LIGHT ASH BROWN (left model),
SECRET HIGHLIGHT BERRY,
SECRET HIGHLIGHT BUTTERY BLONDE,
SECRET HIGHLIGHT CHESTNUT,
SECRET HIGHLIGHT GINGER,
SECRET HIGHLIGHT GOLDEN WALNUT,
SECRET HIGHLIGHT HONEY,
SECRET HIGHLIGHT LIGHT ASH BROWN (right model),
SECRET HIGHLIGHT PLATINUM



New! BARE LUXE LACE

TRANSPARENT LACE

HD LACE

OURS



- ✓ 20% LARGER GRID pattern
- ✓ 40% THINNER LACE design
- ✓ SHOWS MORE SKIN compared to generic lace
- ✓ DISSIPATES LIGHT for a non-reflective matte finish
- ✓ STRONGER reinforced tear-resistant lace fiber

OTHERS



- x SMALLER GRID pattern
- x THICKER LACE design
- x SHOWS MORE LACE than skin
- x REFLECTIVE material makes lace MORE VISIBLE in light
- x TEARS EASILY using generic fibers

IN THIS ISSUE...

100% VIRGIN HUMAN HAIR
5 Empire® Bundles

100% HUMAN HAIR
4-5 Empire®

HUMAN HAIR & PREMIUM FIBER BLEND
7 Cloud 9™ | What Lace®
16-17 Premium Too® | Bulk

100% PREMIUM FIBER
2-3 Bare Lace®
6 Cloud 9™ | What Lace®
10-11 Butta Lace® 360°
12-13 Shear Muse® | Empress®
14-15 Dashly® | HD Lace Wig
18-19 Lulutress®

LACE WIGS

2-3 Bare Lace®
6-7 Cloud 9™ | What Lace®
8-9 Cloud 9™ | Braided Lace Wig
10-11 Butta Lace® 360°
12-13 Shear Muse® | Empress®
14-15 Dashly® | HD Lace Wig

FULL WIGS & HALF WIGS

8-9 Cloud 9™ | Braided Lace Wig

CLOSURES & HAIR PIECES

5 Empire®

BRAIDING HAIR

16-17 Premium Too® | Bulk
18-19 Lulutress®
20 Ruwa®

EXPERIENCE A NEW LACE MATERIAL BEYOND HD & TRANSPARENT

"Lace so thin it looks like skin.™"

FINGER ROLL 10S

Color Shown: T1B/350



OCEAN WAVE 10S

Color Shown: 2



Coming SOON!

100% VIRGIN
10A
HUMAN HAIR

EMPIRE
100% HUMAN HAIR



Coming soon, Empire® 3 pcs of 10" bundles in one pack, added on for your crowning glory. Made with 100% Human Hair and infused with Argan oil. New styles added are Finger Roll, a tighter and rounder curl that mimics a finger rolling hairstyle, and Ocean Wave, the same popular light wave curl pattern known from Empire® Collection.

Available Colors: 1, 1B, 2, 4, 99J, M51, S1B/30, T1B/27, T1B/30, T1B/350, T1B/BG

New COLOR



Now Available in:
BOHEMIAN 10S
CORK SCREW 10S
DEEP WAVE 10S

EMPIRE
Bundles

Empire® Bundles now has a new style, **Water Deep**. It's a mix of Deep Waves and Loose Curls for a more voluminous natural look. Made with 100% Virgin Human Hair, Bleach it, Dye it, Perm it!



New!



WATER DEEP

Available lengths and colors:
10", 12", 14", 16", 18", 20", **22"**, 24", 26", 28"
NATURAL, NATURAL BLACK

4X4 HD LACE CLOSURE WATER DEEP 12"

Available colors:
NATURAL, NATURAL BLACK

New LENGTHS

EMPIRE
Perm Yaki

Expanding in length, our Empire® 100% Human Hair Perm Yaki, is now available in 16 inch & 18 inch length hair.

PERM YAKI

Available lengths and colors:

16", 18" : 1, 1B, 2,
10", 12", 14" : 1, 1B, 2, 4



100% VIRGIN HUMAN HAIR | EMPIRE® BUNDLES | 100% HUMAN HAIR | EMPIRE®

5.

New!



LAURINA

100% PREMIUM FIBER

Available colors: 1, 1B, 2, LIGHT ASH BROWN, SECRET HIGHLIGHT BERRY, SECRET HIGHLIGHT BUTTERY BLONDE, SECRET HIGHLIGHT CHESTNUT, SECRET HIGHLIGHT GINGER, SECRET HIGHLIGHT GOLDEN WALNUT, SECRET HIGHLIGHT HONEY, SECRET HIGHLIGHT LIGHT ASH BROWN, SECRET HIGHLIGHT PLATINUM



QUIANA

100% PREMIUM FIBER

Available colors: 1, 1B, 2, LIGHT ASH BROWN, SECRET HIGHLIGHT BERRY, SECRET HIGHLIGHT BUTTERY BLONDE, **SECRET HIGHLIGHT CHESTNUT**, SECRET HIGHLIGHT GINGER, SECRET HIGHLIGHT GOLDEN WALNUT, SECRET HIGHLIGHT HONEY, SECRET HIGHLIGHT LIGHT ASH BROWN, SECRET HIGHLIGHT PLATINUM



KESHILA 20"

HUMAN HAIR & PREMIUM FIBER BLEND

Available colors: 1, 1B, 2, BALAYAGE LATTE, BALAYAGE PLATINUM, COLOR MELT CHOCOLATE, COLOR MELT COPPER, COLOR MELT GOLD, **COLOR MELT HAZEL**, COLOR MELT MOCHA, LIGHT ASH BROWN

New!

AVAILABLE COLORS MAY VARY BY STYLE AND RETAILER

COLOR MELT CHOCOLATE



COLOR MELT GOLD



COLOR MELT HAZEL



COLOR MELT MOCHA



SECRET HIGHLIGHT BERRY



SECRET HIGHLIGHT BUTTERY BLONDE



SECRET HIGHLIGHT CHESTNUT



SECRET HIGHLIGHT GINGER



SECRET HIGHLIGHT GOLDEN WALNUT



SECRET HIGHLIGHT HONEY



SECRET HIGHLIGHT LIGHT ASH BROWN



SECRET HIGHLIGHT PLATINUM



BALAYAGE LATTE



BALAYAGE PLATINUM



LIGHT ASH BROWN



COLOR MELT COPPER



* SECRET HIGHLIGHTS ARE HIDDEN HIGHLIGHT STRANDS BEHIND THE EARS THATS ARE VISIBLE WITH MOVEMENT.

New!

- Cloud 9 -
BRAIDED LACE WIG
100% HAND-BRAIDED LACE WIG

The latest from
CLOUD 9™

New textured braided **Boho Styles**, now available from our Cloud 9™ 4x4 Hand-Braided HD Lace Wig.

Try our **Boho Box Braid** style with added boho curls on the sides, or our **Box French Curl** style, tightly braided box braids with curls at the ends. Either look will have you ready for the Holidays!

AVAILABLE COLORS:
1, 1B, 2, 613, T1B/27, T1B/30, T1B/350, T1B/BG



4x4
Lace Parting

STYLE SHOWN: (LEFT MODEL)
BOX FRENCH CURL 30"
COLOR: 1B

STYLE SHOWN: (RIGHT MODEL)
BOHO BOX BRAID 30"
COLOR: T1B/27



100% KANEKALON | CLOUD 9™

BUTTA 360 UNIT 3
Color Shown: 1B

New!

BUTTA 360 UNIT 1
Color Shown: 1B

BUTTA 360 UNIT 4
Color Shown: 2

New!

BUTTA 360 UNIT 2
Color Shown: T4/BUTTERSCOTCH BLONDE

BUTTA 360 UNIT 5
Color Shown: 1

New!

360° butta lace

100% PREMIUM FIBER

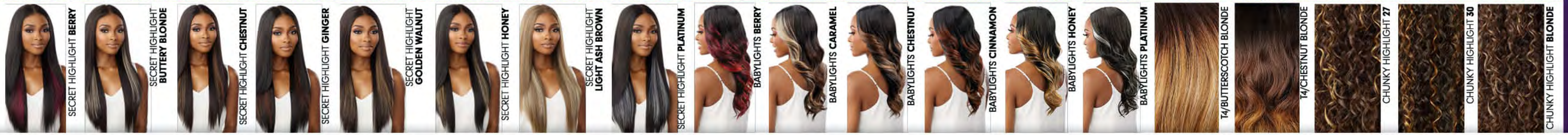


HD LACE HAND-TIED ALL AROUND

Available Colors for **BUTTA 360 UNIT 1, BUTTA 360 UNIT 2, BUTTA 360 UNIT 3:**
1, 1B, 2, BABYLIGHTS BERRY, BABYLIGHTS CARAMEL, BABYLIGHTS CHESTNUT, BABYLIGHTS CINNAMON, BABYLIGHTS HONEY, BABYLIGHTS PLATINUM, LIGHT ASH BROWN, T4/BUTTERSCOTCH BLONDE, T4/CHESTNUT BLONDE

Available Colors for **BUTTA 360 UNIT 4:**
1, 1B, 2, CHUNKY HIGHLIGHT 27, CHUNKY HIGHLIGHT 30, CHUNKY HIGHLIGHT BLONDE, SECRET HIGHLIGHT BERRY, SECRET HIGHLIGHT BUTTERY BLONDE, SECRET HIGHLIGHT GINGER, SECRET HIGHLIGHT GOLDEN WALNUT, SECRET HIGHLIGHT PLATINUM

Available Colors for **BUTTA 360 UNIT 5:**
1, 1B, 2, LIGHT ASH BROWN, SECRET HIGHLIGHT BERRY, SECRET HIGHLIGHT BUTTERY BLONDE, SECRET HIGHLIGHT CHESTNUT, SECRET HIGHLIGHT GINGER, SECRET HIGHLIGHT GOLDEN WALNUT, SECRET HIGHLIGHT HONEY, SECRET HIGHLIGHT LIGHT ASH BROWN, SECRET HIGHLIGHT PLATINUM





From:
EMPRESS
LACE WIG.
LACE FRONT EDGE

All about DREA!

MEET DREA...

Inspired by vintage glam, her S-shaped curls are tailored to a perfect finger wave that gives a classically chic look.

She can serve that sophisticated flare by day or flip the script for an unforgettable night out.



TEXTURIZED
Series



New
STYLE!

Available Colors:
1, **1B**, 2, BG, BLEACH BLONDE, COPPER,
CREAM BLONDE, DARK RED, HL1B/34, HL280/44,
LIGHT ASH BROWN, M51

100% PREMIUM FIBER | SHEAR MUSE®

13.

New!
STYLES

Lace Front
dashly.



LACE UNIT 40

Available Colors: 1, 1B, 2, BALAYAGE CHOCOLATE, BALAYAGE COPPER, BALAYAGE GOLD, BALAYAGE LATTE, BALAYAGE PLATINUM, CHUNKY HIGHLIGHT 27, CHUNKY HIGHLIGHT 30, CHUNKY HIGHLIGHT BLONDE, LIGHT ASH BROWN



LACE UNIT 41

Available Colors: 1, 1B, 2, LIGHT ASH BROWN, LT613/BLUE, LT613/PINK, T4/BUTTERSCOTCH BLONDE, T4/CHESTNUT BLONDE, T4/GOLDEN BROWN, TIP DYE HOT PINK, TIP DYE PURPLE

dashly. Lace Front

Salt & Pepper



SP LACE UNIT 6
COLOR SHOWN:
M44

SP LACE UNIT 5
COLOR SHOWN:
HL280/44



Salt & Pepper
COLOR PALETTE



SP LACE UNIT 6



SP LACE UNIT 5



- READY-TO-WEAR TRENDY STYLES
- MULTI-FACETED COLOR
- DRESS IT UP OR DRESS IT DOWN

SP LACE UNIT 5 AND SP LACE UNIT 6 AVAILABLE COLORS:
1, 1B, 2, BALAYAGE COPPER, BALAYAGE LATTE, CHUNKY HIGHLIGHT 30, CHUNKY HIGHLIGHT BLONDE, FLAMBOYAGE BLONDE, FLAMBOYAGE CHOCOLATE, HL1B/280, HL280/44, M44

100% PREMIUM FIBER | DASHLY® LACE FRONT SALT & PEPPER

15.

New!

PremiumTOO[®] 2XBULK

Smart Shopping WITH 2X'S THE VALUE!

Premium Too[®] now comes in new 2X Bulk, with twice as much hair. It's ideal for feed-in, knotless, goddess, bohemian braids, and more. Perfect color match with Ruwa[®] and X-Pression[®] by Sensationnel[®]. Offering two styles in 18 inch length hair; 2X Deep Bulk and 2X Water Wave Bulk are Human Hair and Premium Fiber Blend. A blend of fibers specific to keep the curl from frizzing up when separating.

Trusted by smart shopper's for style and quality, shop a great value with the latest from Premium Too[®].

BEST FOR BOHO BRAIDS

Human Hair & Premium Fiber Blend

AVAILABLE COLORS:



QUALITY FEATURES :

- Human Hair & Premium Fiber Blend
- Best for Boho Braids
- Perfect Color Match with Ruwa[®] and X-pression[®] Brands by Sensationnel[®]
- Sensationnel[®] Style, a Sensational Value

WATER WAVE BULK



Premium Too[®] 2X Water Wave Bulk 18" has a silky-smooth texture curl pattern of rippling bouncy waves. Loose and cascading waves for an effortless vibe.

DEEP BULK



Premium Too[®] 2X Deep Bulk 18" has a soft texture of waves. It's a mix of volume and glamour in an undulating curl pattern for a natural-flowing look.



'Tis the Season for new 3X PRE-LOOPED BOHO STYLES

Lulutress
BEAUTY IS WHAT YOU CREATE!



READY TO WEAR
INSTANT BOHO STYLE

- ✓ LIGHT WEIGHT FIBERS
- ✓ EASY STYLING & MAINTENANCE
- ✓ LONG-LASTING NATURAL LOOK
- ✓ EASY TO INSTALL



New!
Color Shown: T1B/30
BOHO BOX BRAID LARGE 28"
3X PRE-LOOPED CROCHET BRAID

New!
Color Shown: T1B/27
BOHO BOX BRAID 28"
3X PRE-LOOPED CROCHET BRAID

New!
Color Shown: 1B
BOHO PASSION TWIST 24"
3X PRE-LOOPED CROCHET BRAID

New!
Color Shown: 2
MERMAID LOCS 24"
3X PRE-LOOPED CROCHET BRAID

Available Colors:
1, 1B, 2, 4, T1B/27, T1B/30,
T1B/350, T1B/613, T1B/BG,
T1B/RED

Style Shown: 3X PRE-STRETCHED BRAID 24" Color: 1B



LIGHT WEIGHT & SOFT



WATER REPELLENT



FLAME RETARDANT



FAST DRYING



HOT WATER SET

RUWVA[®]

Made With Aquatex[®] Fiber From Kanekalon[®]

Aquatex[®] and Kanekalon[®] are registered trademarks of Kaneka Corporation. © 2023 Kaneka Corporation. All rights reserved.