



SENSATIONNEL®

JUL/AUG 2023

Summer
EDITION

#SensationnelHair     

EMPIRE®

100% HUMAN HAIR

Expanding Our
Powerhouse Brand.



**STRAIGHT
14"**

Available Color:
1, 1B, 2, 4, T2/27,
T2/30, T2/BG



**STRAIGHT
18"**

Available Color:
1, 1B, 2, 4, 6, 30,
530, 613, 18/22,
27/30, 27/613,
4/30, 4/613,
T2/27, T2/30,
T2/613, T2/BG

7 PIECE CLIP-IN HAIR EXTENSIONS

1 PIECE | 1 PIECES | 1 PIECES | 2 PIECES | 2 PIECES
10" WEFT | 7" WEFT | 5" WEFT | 3.5" WEFTS | 2" WEFTS

Butterfly Clip In™
PATENT PENDING

New Butterfly
Clip In™ lifts open
like butterfly wings and
grips hair from the side.

- ADDS VOLUME & LENGTH
- INFUSED WITH ARGAN OIL
- COMFORTABLE & SECURE
- FLEXIBLE LACE WEFT



IN THIS ISSUE...

100% VIRGIN HUMAN HAIR
4 Empire® Bundles

100% REMY HUMAN HAIR
6-7 Everly™ | Clip-Ins

100% HUMAN HAIR
2-3 Empire® | Clip-Ins
5 Empire® | Bulk

**HUMAN HAIR &
PREMIUM FIBER BLEND**
8-9 Cloud 9™ | What Lace®
14-15 What Lace® | Butta Lace®

100% PREMIUM FIBER
8-9 Cloud 9™ | What Lace®
10 Dashly® | Lace Part Wig
11 Dashly® | HD Lace Wig
12-13 Shear Muse® | Empress®
16-17 What Lace® | Butta Lace®
18-19 Instant Weave® Drawstring
24 Shear Muse® | Red Krush®

HD LACE WIGS
8-9 Cloud 9™ | What Lace®
10 Dashly® | Lace Part Wig
11 Dashly® | HD Lace Wig
12-13 Shear Muse® | Empress®
14-17 What Lace® | Butta Lace®
24 Shear Muse® | Red Krush®

FULL WIGS & HALF WIGS
10 Dashly® | Lace Part Wig
18-19 Instant Weave® Drawstring

CLOSURES & HAIR PIECES
2-3 Empire® | Clip-Ins
6-7 Everly™ | Clip-Ins
18-19 Instant Weave® Drawstring

BRAIDING HAIR
20-21 Lulutress®
22 X-Pression®
23 Ruwa®

4X4 MULTI

New!
PRODUCT

1 PACK STYLE

1 LACE CLOSURE

3 BUNDLES



EMPIRE[®] Bundles

100% Virgin Human Hair

EMPIRE[®] BUNDLES AVAILABLE PRODUCTS:

MULTI PACK + 4X4 CLOSURE

AVAILABLE STYLES:
**STRAIGHT
BODY WAVE**

AVAILABLE COLORS:
**NATURAL,
NATURAL BLACK**

AVAILABLE LENGTH
COMBINATIONS:

**10", 12", 14"
12", 14", 16"
14", 16", 18"
16", 18", 20"
18", 20", 22"**

4X4 HD LACE CLOSURES

AVAILABLE STYLES:
**STRAIGHT
BODY WAVE
DEEP 12"
LOOSE DEEP 12"**

AVAILABLE LENGTHS:
10", 12", 14", 16", 18"

(DEEP & LOOSE DEEP only available in 12")

AVAILABLE COLORS:
(May Vary By Length & Texture):
**NATURAL,
NATURAL BLACK,
613, DARK RED**

WEFTED BUNDLES

AVAILABLE STYLES:
**STRAIGHT
BODY WAVE
DEEP
LOOSE DEEP**

AVAILABLE LENGTHS:
**10", 12", 14", 16", 18",
20", 22", 24", 26", 28"**

AVAILABLE COLORS
(May Vary By Length & Texture):
**NATURAL,
NATURAL BLACK,
613, DARK RED**

13X4 HD LACE FRONTAL

AVAILABLE STYLES:
**STRAIGHT
BODY WAVE**

AVAILABLE LENGTHS:
10", 12", 14", 16", 18"

AVAILABLE COLORS:
**NATURAL,
NATURAL BLACK**

New!
PRODUCT

EMPIRE[®] 100% HUMAN HAIR BULK

AVAILABLE STYLES:

DEEP BULK 18" • WATER WAVE BULK 18"

AVAILABLE COLORS: 1, 1B, 2, 27, 30, 350, BG





EVERLY™

100% REMY HUMAN HAIR

7 PIECE CLIP IN HAIR EXTENSIONS

Available Styles **CLIP IN 18** & **CLIP IN 22**

SIDE VIEW

New **Butterfly Clip In™** lifts open like butterfly wings and grips hair from the side.



Features	EVERLY™	Competitors
Butterfly Side Grip Technology	😊	✗
Flex Design That Contours	😊	✗
Ultra Thin Polyurethane Weft	😊	😊
Less Hair Snag	😊	✗
100% Remy Hair Standard	😊	😊
No Teasing Required	😊	✗
25+ Color Range	😊	😊

Available Colors: 1, 1B, 2, 4, 30, 6, 27, 16, 18, 22, 24, 613, 4/613, 10/16, 27/613, 14/22, 18/22, 6/18/22, 6/27/22, 8/10/16, 10/12/613, 18/12/27, 18/27/613, 27/16/613, T2/613



TENSION-FREE, SECURE STYLING
BUTTERFLY CLIP IN™ HUGS HAIR FOR LESS HAIR SNAGS

25 COLORS AVAILABLE
BASIC, SOLID, MIXED, AND TWO-TONE COLORS

INSTANT VOLUME & LENGTH
SIMPLE D.I.Y. FOR ANYONE

New!

-Cloud 9-
SWISS LACE WIG
whatlace?
HAIRLINE ILLUSION LACE WIG



ESTELLE

Available colors:

- 1, 1B, 2,
- BALAYAGE CARAMEL,
- BALAYAGE LATTE,
- CHUNKY HIGHLIGHT 27,
- CHUNKY HIGHLIGHT 30,
- CHUNKY HIGHLIGHT BLONDE,
- COLOR BLOCK 1/RED,
- COLOR BLOCK 1B/27,**
- COLOR BLOCK 1B/350



ELIANA 20"

Color Shown: 1B

**GLUE
LESS**
LACE WIG

Available Colors:

- 1, 1B, 2, COLOR MELT BLONDE, COLOR MELT CARAMEL, COLOR MELT CHOCOLATE,
- COLOR MELT GOLD, COLOR MELT HAZEL, COLOR MELT MOCHA



GIANA 28"

Color Shown: 2



Color Melt
BLONDE



Color Melt
CARAMEL



Color Melt
CHOCOLATE



Color Melt
GOLD



Color Melt
HAZEL



Color Melt
MOCHA

**what
lace?**

Human Hair & Premium Fiber Blend



dashly.®

Lace Part Wig



LP UNIT 3

Available Colors:
1, 1B, 2, T2/27,
T2/30, T2/BG,
T2/COPPER



LP UNIT 2

Available Colors:
1, 1B, 2, 613,
T2/27, T2/30,
T2/BG,
T2/COPPER



LP UNIT 1

Available Colors:
1, 1B, 2, T2/27,
T2/30, T2/BG,
T2/COPPER

Lace Front dashly.®

(LACE UNIT 32)

Available Colors: 1, 1B, 2, BALAYAGE CARAMEL, BALAYAGE LATTE, CHUNKY HIGHLIGHT 27, CHUNKY HIGHLIGHT 30, CHUNKY HIGHLIGHT BLONDE, COLOR BLOCK 1/RED, COLOR BLOCK 1B/27, COLOR BLOCK 1B/350

(LACE UNIT 33 & LACE UNIT 34)

Available Colors: 1, 1B, 2, BALAYAGE CARAMEL, BALAYAGE CHOCOLATE, BALAYAGE GOLD, BALAYAGE HAZELNUT, BALAYAGE LATTE, BALAYAGE MOCHA, CHUNKY HIGHLIGHT 27, CHUNKY HIGHLIGHT 30, CHUNKY HIGHLIGHT BLONDE



COLOR SHOWN: 2



LACE UNIT 32

- BALAYAGE CARAMEL
- BALAYAGE LATTE
- CHUNKY HIGHLIGHT 27
- CHUNKY HIGHLIGHT 30
- CHUNKY HIGHLIGHT BLONDE
- COLOR BLOCK 1/RED
- COLOR BLOCK 1B/27
- COLOR BLOCK 1B/350

HD lace

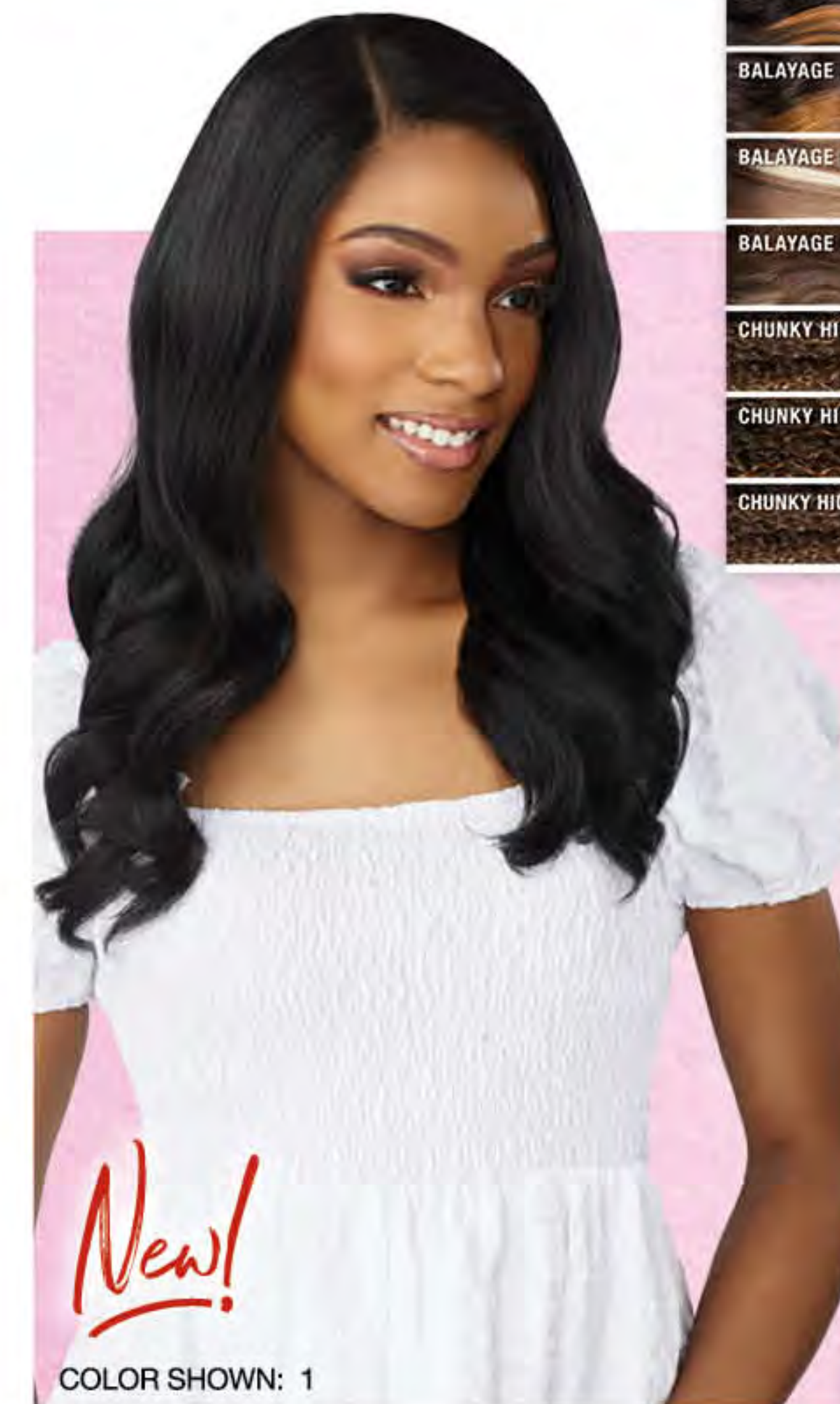


COLOR SHOWN: 1



LACE UNIT 33

- BALAYAGE CARAMEL
- BALAYAGE CHOCOLATE
- BALAYAGE GOLD
- BALAYAGE HAZELNUT
- BALAYAGE LATTE
- BALAYAGE MOCHA
- CHUNKY HIGHLIGHT 27
- CHUNKY HIGHLIGHT 30
- CHUNKY HIGHLIGHT BLONDE



COLOR SHOWN: 1



LACE UNIT 34

100% PREMIUM FIBER | DASHLY.® LACE FRONT



From:
EMPRESS
LACE WIG.
LACE FRONT EDGE



COMING IN HOT WITH 14 COLORS!

MEET SHARITTA. Her sultry waves are sure to entice, and her expansive 14 color range is sure to turn heads. **Why be basic, when you can be bold!**

Available Colors: BABY BLUE, BABY PINK, BABY PURPLE, COLOR ME*, MINT FROST, NEON FIRE, NEON FOREST, NEON LEMON, NEON LIME, NEON PINK, NEON PURPLE, NEON ROYAL BLUE, NEON TANGERINE, TEAL GREEN

Try **COLOR ME***
A SYNTHETIC WIG
YOU CAN DYE!



SCAN for TUTORIAL



SHARITTA



100% PREMIUM FIBER | SHEAR MUSE®

13.

Smooth like...

butta lace®

HUMAN HAIR & PREMIUM FIBER BLEND



DEEP TWIST 26"

AVAILABLE COLORS:
1, 1B, 2, BALAYAGE CARAMEL,
BALAYAGE CHOCOLATE,
BALAYAGE GOLD,
BALAYAGE HAZELNUT,
BALAYAGE MOCHA,
FLAMBOYAGE AUBURN,
FLAMBOYAGE BLONDE,
FLAMBOYAGE MOCHA,
FLAMBOYAGE SAND



LOOSE CURLY 18"

AVAILABLE COLORS:
1, 1B, 2, BALAYAGE CARAMEL,
BALAYAGE CHOCOLATE,
BALAYAGE COPPER,
BALAYAGE FIERY RED,
BALAYAGE GOLD,
BALAYAGE HAZELNUT,
BALAYAGE MOCHA,
BALAYAGE PLATINUM,
BALAYAGE SUNKISSED



LOOSE CRIMP 28"

AVAILABLE COLORS:
1, 1B, 2, BALAYAGE CARAMEL,
BALAYAGE CHOCOLATE,
BALAYAGE GOLD,
BALAYAGE HAZELNUT,
BALAYAGE MOCHA,
BALAYAGE PLATINUM,
FLAMBOYAGE AUBURN,
FLAMBOYAGE BLONDE,
FLAMBOYAGE SAND



VIRTUALLY
HD lace
UNDETECTABLE

New!

butta lace®

100% PREMIUM FIBER



UNIT 44



UNIT 43



BUTTA UNIT 44

AVAILABLE COLORS:
1, 1B, 2, 613,
BALAYAGE CARAMEL,
BALAYAGE CHOCOLATE,
BALAYAGE COPPER,
BALAYAGE GOLD,
BALAYAGE HAZELNUT,
BALAYAGE LATTE,
BALAYAGE MOCHA,
BALAYAGE PLATINUM



BUTTA UNIT 43

AVAILABLE COLORS:
1, 1B, 2, 613,
BALAYAGE CARAMEL,
BALAYAGE CHOCOLATE,
BALAYAGE COPPER,
BALAYAGE GOLD,
BALAYAGE HAZELNUT,
BALAYAGE HAZELNUT,
BALAYAGE MOCHA,
BALAYAGE PLATINUM



UNIT 42



BUTTA UNIT 42

AVAILABLE COLORS:
1, 1B, 2, BALAYAGE CARAMEL,
BALAYAGE CHOCOLATE,
BALAYAGE GOLD,
BALAYAGE HAZELNUT,
BALAYAGE MOCHA,
T1B/4, T2/350



BUTTA UNIT 41

AVAILABLE COLORS:
1, 1B, 2, 613,
BALAYAGE CARAMEL,
BALAYAGE CHOCOLATE,
BALAYAGE GOLD,
BALAYAGE HAZELNUT,
BALAYAGE MOCHA,
COLOR BLOCK 1B/27,
COLOR BLOCK 1B/350



UNIT 41



BUTTA UNIT 40

AVAILABLE COLORS:
1, 1B, 2, 613,
BALAYAGE CARAMEL,
BALAYAGE CHOCOLATE,
BALAYAGE GOLD,
BALAYAGE HAZELNUT,
BALAYAGE MOCHA,
COLOR BLOCK 1B/27,
COLOR BLOCK 1B/350



UNIT 40

NEW COLORS



100% PREMIUM FIBER | BUTTA LACE®

New!

New!

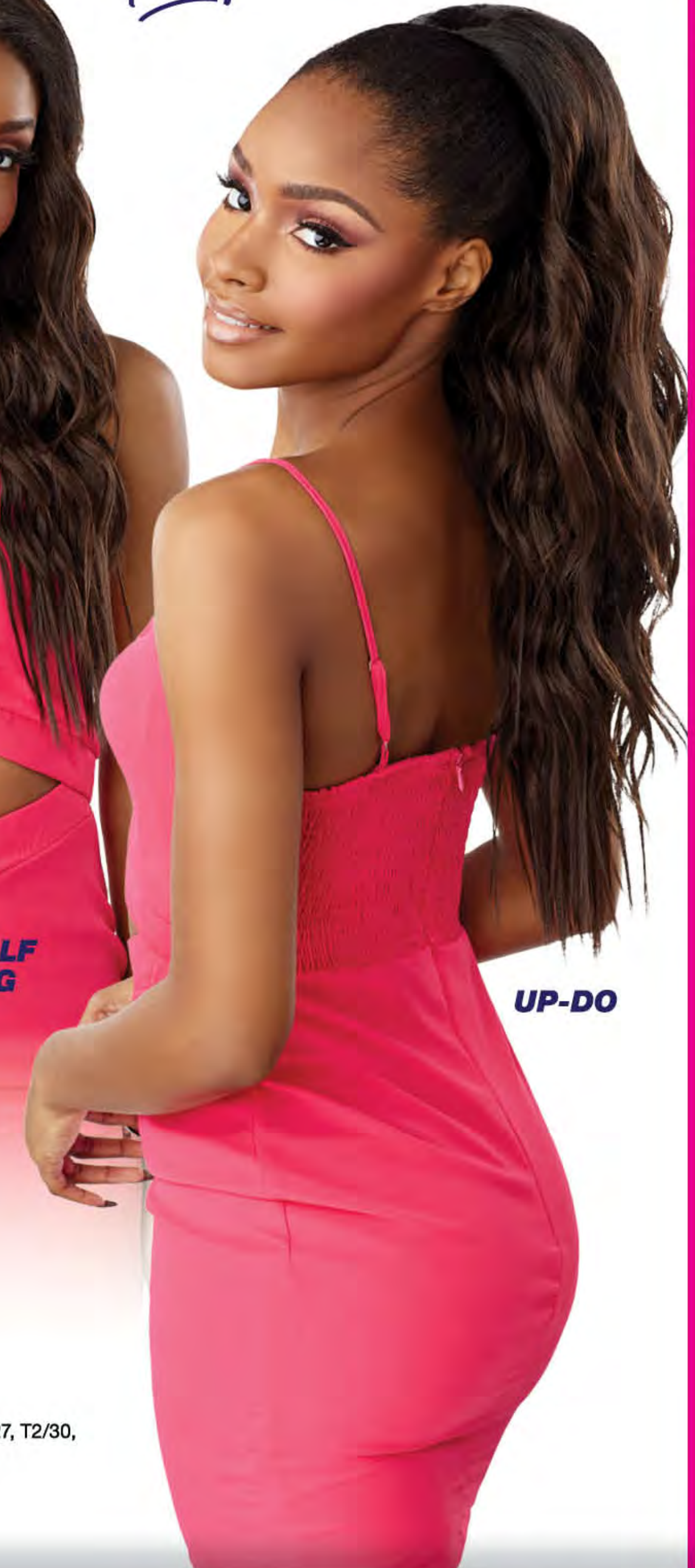
New!

2-IN-1

Styles

INSTANT WEAVE® DRAWSTRING

- Half Wig With Drawstring Cap
- Can Be Worn As A Half Wig Or Up-Do
- Drawstring Can Be Adjusted To Fit Various Sizes
- Available In Basic & Two-Tone Colors



IWD 15

Available colors:
1, 1B, 2, 4, T1B/4, TH2/27,
TH2/30, TH2/BG, TH2/COPPER



IWD 16

Available colors:
1, 1B, 2, 4, T1B/4, T2/27, T2/30,
T2/BG, T2/COPPER

100% PREMIUM FIBER | INSTANT WEAVE® DRAWSTRING

New!



(FULLY FOLDED)
3X BRAID OUT 24"

AVAILABLE COLORS:
1, 1B, 2,
4, 27, 30,
BG, T1B/27,
T1B/30,
T1B/BG



New!



(PRE-LOOPED)
3X BRAID OUT 12"

AVAILABLE COLORS:
1, 1B, 2,
4, 27, 30,
BG, M51,
T1B/27,
T1B/30,
T1B/BG



lulutress POPULAR • PRETTY • PROTECTIVE

New!



(FULLY FOLDED)
3X FRENCH WAVE 24"

AVAILABLE COLORS:
1, 1B, 2, 4,
27, 30, BG,
T1B/27,
T1B/30,
T1B/BG



New!



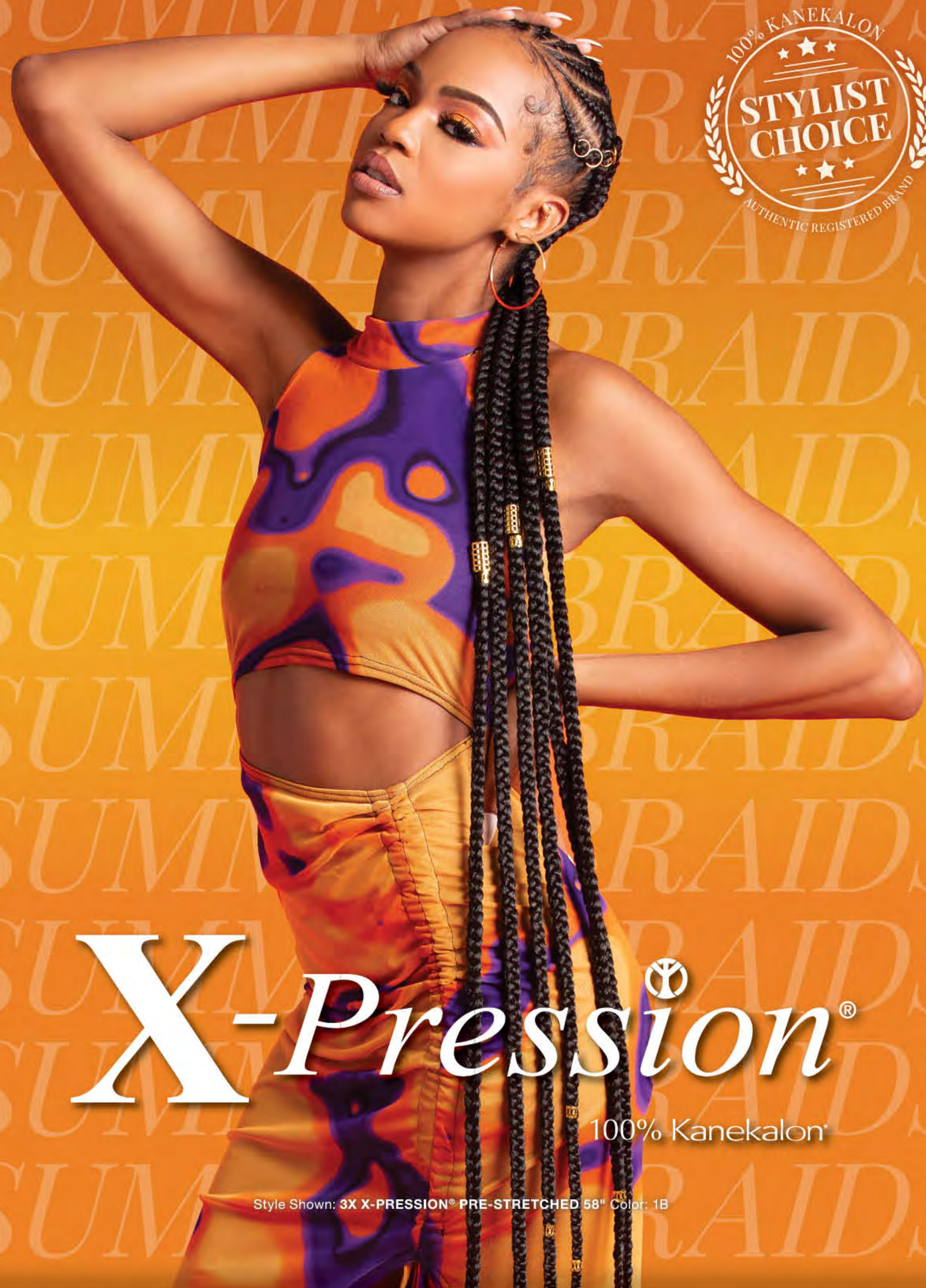
(PRE-LOOPED)
3X BOX FRENCH CURL 24"

AVAILABLE COLORS:
1, 1B, 2, 4,
27, 30, 613, BG,
T1B/27, T1B/30,
T1B/BG



100% PREMIUM FIBER | LULUTRESS®

21.



X-Pression®

100% Kanekalon®

Style Shown: 3X X-PRESSION® PRE-STRETCHED 58" Color: 1B



RUUWA®

Made With Aquatex® Fiber From Kanekalon®

Style Shown: 3X AFRO TWIST 16" (Styled As Distressed Locs) Color: SM1B/350, 350

- INSTANT LOCKING
- LIGHT WEIGHT & SOFT
- WATER REPELLENT
- FLAME RETARDANT
- FAST DRYING
- HOT WATER SET

© 2023 Hair Zone, Inc. | Aquatex® and Kanekalon® are registered trademarks of Kaneka Corporation. All rights reserved.

100% KANEKALON® AQUATEX® FIBER | RUUWA®

RED KRUSH®

Salon Inspired Cut & Color by Shear Muse®



New
STYLE

DANISHA

Shear Muse

From:
EMPRESS
LACE WIG.
LACE FRONT EDGE



Available Colors: 1, 1B, 2, APPLE RED, CARROT RED, CRIMSON RED, FIRE RED, GINGER RED, WINE RED

HDlace
KEEP THEM GUESSING



#SensationnelHair
©2023 Hair Zone, Inc.



WWW.SENSATIONNEL.COM