



SENSATIONNEL®

JAN/FEB 2023

2023

New Year
EDITION

#SensationnelHair



IN THIS ISSUE...

100% VIRGIN HUMAN HAIR

1-3 Empire® Bundles

100% HUMAN HAIR

4-5 Empire®

6 Empire® Bump

7 Empire® Celebrity Wig

HUMAN HAIR & PREMIUM FIBER BLEND

8-9 What Lace® | Butta Lace®

12-13 Cloud 9™ | What Lace®

100% PREMIUM FIBER

10-11 What Lace® | Butta Lace®

14-15 Vice® Bundles

16-17 Vice® Bundles Multi

18-19 Dashly® | Lace Front Wig

20 Dashly® Wig

21 Instant Up & Down®

HD LACE WIGS

8-11 What Lace® | Butta Lace®

12-13 Cloud 9™ | What Lace®

18-19 Dashly® | Lace Front Wig

FULL WIGS

7 Empire® Celebrity Wig

20 Dashly® Wig

HALF WIGS & PONYTAILS

21 Instant Up & Down®

HAIR PIECES & CLOSURES

4-5 Empire®

16-17 Vice® Bundles Multi

21 Instant Up & Down®

BRAIDING HAIR

22 Lulutress®

23 X-Pression®

24 Ruwa®



Happy NEW YEAR

Sensationnel® would like to take this opportunity to thank you for your continued patronage and trust.

Wishing You And Your Family Blessings And Good Health.

새해 복 많이 받으세요!


100% VIRGIN HUMAN HAIR

Empire® Bundles offers a full line of products:

WEFTED BUNDLES • 4X4 HD LACE CLOSURES • 13X4 HD LACE FRONTAL

EMPIRE
100% HUMAN HAIR

New Empire[®]
CURLY TEXTURES

Start the New Year with our latest Empire[®] curl patterns. **It's a New Deep, an Ocean Wave, and you. Added on for your crowning glory. Also available in an HD Lace Closure.**



NEW EMPIRE[®] WEAVING CURLY TEXTURES:
OCEAN WAVE AND **NEW DEEP**
AVAILABLE LENGTHS: 10", 12", 14", 16", 18"
AVAILABLE COLORS: 1, 1B, 2, 4, 27, 30, 99J, BG, S1B/30, S4/30, T1B/27, T1B/30, T1B/BG



WEAVING STYLE:
OCEAN WAVE
(MODEL WEARING)
COLOR : 1
LENGTH : 18"



WEAVING STYLE:
NEW DEEP
(MODEL WEARING)
COLOR : 1
LENGTH : 18"



NEW
HD LACE
Closure
Textures



STYLE:
NEW DEEP 12"
HD LACE
CLOSURE



STYLE:
OCEAN WAVE 12"
HD LACE
CLOSURE

AVAILABLE HD LACE CLOSURE COLORS:
1, 1B, 2, 4

EMPIRE[®]

100% HUMAN HAIR

For Hair That's Stunningly Soft and Smooth,
Crown Yourself with Argan Oil Infused EMPIRE[®]
100% Human Hair from Sensationnel[®].
Argan Oil protects against the heat of hair dryers,
curling irons and flat irons; tames frizz and flyaways,
all the while maintaining a healthy shine.

- FEATURES:**
- SOFT & SMOOTH TEXTURE
 - LONG LASTING CURL RETENTION
 - ARGAN OIL INFUSED



Show Us Your Crowning Glory!
#EmpireHair

Available Colors:
1, 1B, 2, 4, 27, 30, 613, 99J, BG, HOT PINK, RED

New!

BRITTA
Color Shown: 2

New!

CIA
Color Shown:
HOT PINK



EMPIRE[®] FEATURES:
SOFT & SMOOTH TEXTURE • TANGLE FREE
SHED FREE • LONG LASTING CURL RETENTION

100% HUMAN HAIR CAN BE STYLED
WITH A CURLING IRON OR FLAT IRON.



Available Colors:
1, 1B, 2, 613, HOT PINK, RED, T2/27, T2/30, T2/350, T2/BG



New!



New!



New!

Smooth like...

butta lace®



BLOW OUT 16"

AVAILABLE COLORS:
1, 1B, 2, BALAYAGE CARAMEL,
BALAYAGE CHOCOLATE,
BALAYAGE GOLD,
BALAYAGE HAZELNUT,
BALAYAGE MOCHA,
FLAMBOYAGE AUBURN,
FLAMBOYAGE BLONDE,
FLAMBOYAGE MOCHA,
FLAMBOYAGE SAND



STRAIGHT 26"

AVAILABLE COLORS:
1, 1B, 2, BALAYAGE CARAMEL,
BALAYAGE CHOCOLATE,
BALAYAGE GOLD,
BALAYAGE HAZELNUT,
BALAYAGE MOCHA,
T4/ASH BLONDE,
T4/CHESTNUT BLONDE,
T4/WINE



HOLLYWOOD WAVE 26"

AVAILABLE COLORS:
1, 1B, 2, BALAYAGE CARAMEL,
BALAYAGE CHOCOLATE,
BALAYAGE GOLD,
BALAYAGE HAZELNUT,
BALAYAGE MOCHA,
FLAMBOYAGE AUBURN,
FLAMBOYAGE BLONDE,
FLAMBOYAGE MOCHA,
FLAMBOYAGE SAND



New!



VIRTUALLY
HD lace
UNDETECTABLE

butta lace



Glamorous units
WINTER SIZZLE.

It's time to warm things up a bit in winter with the latest available styles from Butta HD Lace Wig. Long and sensuous, try these hot styles and melt the ice away.

New!



BUTTA UNIT 31

AVAILABLE COLORS:
1, 1B, 2, BALAYAGE CARAMEL,
BALAYAGE GOLD, **BALAYAGE LATTE**,
CHUNKY HIGHLIGHT 27,
CHUNKY HIGHLIGHT 30,
CHUNKY HIGHLIGHT BLONDE,
FLAMBOYAGE BLONDE,
FLAMBOYAGE CHOCOLATE,
FLAMBOYAGE MOCHA

New!



New!



BUTTA UNIT 32

AVAILABLE COLORS:
1, 1B, 2, BALAYAGE CARAMEL,
BALAYAGE GOLD, BALAYAGE LATTE,
CHUNKY HIGHLIGHT 27,
CHUNKY HIGHLIGHT 30,
CHUNKY HIGHLIGHT BLONDE,
FLAMBOYAGE BLONDE,
FLAMBOYAGE CHOCOLATE,
FLAMBOYAGE MOCHA



BUTTA UNIT 28

AVAILABLE COLORS:
1, 1B, 2, 613,
BALAYAGE CARAMEL,
BALAYAGE CHOCOLATE,
BALAYAGE GOLD,
BALAYAGE HAZELNUT,
BALAYAGE MOCHA,
T2/27, T2/30



BUTTA UNIT 33

AVAILABLE COLORS:
1, 1B, 2, BALAYAGE CARAMEL,
BALAYAGE CHOCOLATE,
BALAYAGE GOLD,
BALAYAGE HAZELNUT,
BALAYAGE MOCHA,
T1B/4, T2/350

New!
PRODUCT

what lace?

Human Hair & Premium Fiber Blend

WELL CRAFTED • PRE-CUSTOMIZED • UNDETECTABLE

Full Bodied Movement And Natural Luster

13" X 6" Ear-to-Ear HD Lace
With 6" Deep Hand-tied Parting Area

Pre-plucked, Natural Density Hairline
With Baby Hairs

Mesh Cap with Elastic Wig Band
for a Comfortable, Secure Fit

VIRTUALLY
HD
lace
UNDETECTABLE



13 x 6

NATURAL
DENSITY



New!

ARABELLA 28"

Available Colors: 1, 1B, 2, 613,
COLOR MELT BLONDE,
COLOR MELT CARAMEL,
COLOR MELT CHOCOLATE,
COLOR MELT GOLD,
COLOR MELT HAZEL,
COLOR MELT MOCHA



New!

AZIZA 26"

Available Colors: 1, 1B, 2, 613,
COLOR MELT BLONDE,
COLOR MELT CARAMEL,
COLOR MELT CHOCOLATE,
COLOR MELT GOLD,
COLOR MELT HAZEL,
COLOR MELT MOCHA



New!

EZRA 28"

Available Colors: 1, 1B, 2, 613,
COLOR MELT BLONDE,
COLOR MELT CARAMEL,
COLOR MELT CHOCOLATE,
COLOR MELT GOLD,
COLOR MELT HAZEL,
COLOR MELT MOCHA



Color Melt

A Blend of Balayage
Highlights And Ombre
Gradation With Three
Or More Shades.



Color Melt
BLONDE

Color Melt
CARAMEL

Color Melt
CHOCOLATE

Color Melt
GOLD

Color Melt
HAZEL

Color Melt
MOCHA

Length Shown: 30" Color: 350



Length Shown: 36" Color: 2



Length Shown: 24" Color: 1



Length Shown: 24" Color: 4



Length Shown: 30" Color: 30



Length Shown: 36" Color: 1B



Style Name: **BOHO CURL**

Style Name: **DEEP TWIST**

Styled as: PONYTAIL



Styled as: PONYTAIL



VICE® BUNDLES

100% PREMIUM FIBER

Two New Textures

BOHO CURL & DEEP TWIST

Available Lengths: 24", 30", 36"

Available Colors: 1, 1B, 2, 4, 27, 30, 350, 613, BG





HD LACE with BABY HAIR

STRAIGHT
 Lengths Shown:
 26"/28"/30"
 + HD Lace Closure
 Color Shown: 613

NEW Available Lengths:
 14"/16"/18"

VICE BUNDLES

More to Love

3X MULTI PACK

Available Lengths:
 14"/16"/18" (NEW Lengths)
 18"/20"/22" • 26"/28"/30"

Available Colors:
 1, 1B, 2, 613, BALAYAGE AUBURN,
 BALAYAGE BLONDE, T2/27, T2/30, T2/BG

VICE® VALUE PACK
 3 BUNDLES +
2x5
 HD Lace Closure



BODY WAVE
 Lengths Shown:
 18"/20"/22"
 + HD Lace Closure
 Color Shown: 1B

NEW Available Lengths:
 14"/16"/18"

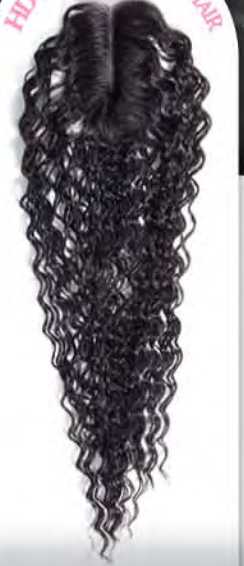
HD LACE with BABY HAIR



DEEP
 Lengths Shown:
 26"/28"/30"
 + HD Lace Closure
 Color Shown: 2

NEW Available Lengths:
 14"/16"/18"

HD LACE with BABY HAIR



CRIMP
 Lengths Shown:
 18"/20"/22"
 + HD Lace Closure
 Color Shown: 1

NEW Available Lengths:
 14"/16"/18"

HD LACE with BABY HAIR



BRAVA!
*Pull back the
 Curtains and
 reveal a new you.*

Dashly® Lace Wig has released the latest cascading styles to bring in the New Year. **Curtain Bangs** effortlessly face frame your look to delight any audience. With popular wavy styles, these sensual **Curtain Bangs** are a hot trend to not miss.

dashly.[®]
Curtain Bangs



New!



New!



New!



LACE UNIT 28
 Color: 1

LACE UNIT 27
 Color: 1B

LACE UNIT 26
 Color: 2

HDlace
 KEEP THEM GUESSING



SPECIAL COLORS:



Available Colors:
 1, 1B, 2, CHUNKY HIGHLIGHT 27, CHUNKY HIGHLIGHT 30, CHUNKY HIGHLIGHT BLONDE, MONEY PIECE BLONDE, MONEY PIECE CARAMEL, MONEY PIECE GOLD, MONEY PIECE HAZEL, MONEY PIECE PLATINUM

New!

New!

New!

New!



UD16
Color Shown:
1B

UD15
Color Shown:
FLAMBOYAGE
BLONDE

dashly.[®]
Full Wig



UNIT 9 (LEFT MODEL)
Available Colors: 1, 1B, 2, 613, BG, COPPER, DARK BLUE, DARK PURPLE, M44, RED



UNIT 10 (RIGHT MODEL)
Available Colors: 1, 1B, 2, 613, DARK BLUE, DARK PURPLE, M44, RED, T2/27, T2/30, T2/BG, T2/COPPER

Instant
UP & DOWN[®]



Available Colors: 1, 1B, 2, 4, FLAMBOYAGE AUBURN, FLAMBOYAGE BLONDE, FLAMBOYAGE CHOCOLATE, FLAMBOYAGE MOCHA, T2/27, T2/30, T2/613, T2/COPPER

Coming
Soon...
New
LULUTRESS®



Coming Soon!
STYLE:
(PRE-LOOPED)

**3X TWISTED
DISTRESSED
LOCS 26"**

AVAILABLE COLORS:
1, 1B, 2, 4, 27, 30, BG, SM1B/27,
SM1B/30, SM1B/BG

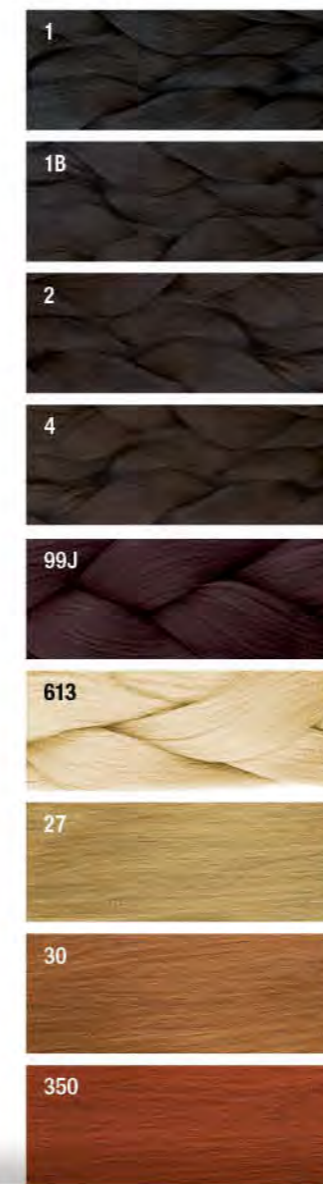


New Colors in X-PRESSION®

3X X-PRESSION PRE-STRETCHED BRAID 58"

Available Colors: 1, 1B, 2, 4, 27, 30, 350, 613, 99J, BG, BLUE, GREEN, ORANGE, PINK, PURPLE, RAINBOW, RED, SM1B/27, SM1B/30, SM1B/350, SM1B/BG, T1B/27, T1B/30, T1B/613, T1B/BG, T1B/BLU, T1B/EMERALD, T1B/MUSTARD, T1B/PUR, T1B/RED, 3T1B/DBLUE/LBLUE, 3T1B/LPINK/BLUE, 3T1B/MINT/LMINT, 3T1B/PURPLE/PINK, 3TBLUE/LBLUE/LAVENDER, 3TPURPLE/PINK/LPINK, 3T2/27/613, 3T2/30/27, **INDIGO, MARSH, PEBBLE (NEW COLORS)**

BASIC COLORS



MULTI-TONE COLORS



TWO-TONE OMBRE COLORS



EXTRA COLORS



 SENSATIONNEL®

2023



Happy
**NEW
YEAR**

For all you
Ruwa® lovers out there,
we thank you for making us the
#1 Consumer Choice of Braids.
We wish you a very
Happy New Year.

RUWA®
Made With Aquatex® Fiber From Kanekalon®

Style Shown: **3X Pre-stretched 24" Color: SM1B/27**
Aquatex® and Kanekalon® are registered trademarks of Kaneka Corporation. © 2023 Kaneka Corporation. All rights reserved.

#SensationnelHair
©2023 Hair Zone, Inc.



WWW.SENSATIONNEL.COM