



SENSATIONNEL®

SEP/OCT 2022

Autumn
EDITION

#SensationnelHair



EMPIRE[®] Bundles

100% Virgin Human Hair



BLEACH/DYE



PERM



HEAT SAFE

“...We understand the hearts of customers -- who want to create their own style with their own colors rather than the colors out on the market...”

A New Product From A Powerhouse Brand.

We have launched 100% Virgin Human Hair Bundles in EMPIRE[®] for modern day empresses who want to define style on their own terms. With its 10A grade rating, Empire[®] Bundles can be Bleached and dyed to create your own colors.

Style Shown:
STRAIGHT 28"
Color:
NATURAL
(Bleached and
Dyed to Pink)

EMPIRE[®]
100% HUMAN HAIR



Just in time for fall, Empire[®] Yaki is now available in two NEW Autumn inspired colors.

Our original and trusted brand, Empire[®] first launched with yaki weaving almost a decade ago. It has since become a reputable market leader.

New
COLORS



S1B/BG



S1B/350

IN THIS ISSUE...

100% VIRGIN & 100% HUMAN HAIR

- 1-5 Empire[®] & Empire[®] Bundles
- 6-7 Bare & Natural[®] | Bundle Deals

HUMAN HAIR & PREMIUM FIBER BLEND

- 12 What Lace[®] | Butta Lace[®]

100% PREMIUM FIBER

- 8-9 Vice[®] Bundles
- 10-11 Cloud 9[™] | What Lace[®]
- 12-13 What Lace[®] | Butta Lace[®]
- 14 Dashly[®] | Lace Front Wig
- 15 Vice[®] | HD Lace Wig

- 16-17 Shear Muse[®] | Red Krush[®]
- 18-19 Instant Up & Down[®]
- 20 Lulu Pony[®]
- 21 Curls Kinks & Co.[®] | Clip-Ins

HD LACE WIGS

- 10-11 Cloud 9[™] | What Lace[®]
- 12-13 What Lace[®] | Butta Lace[®]
- 14 Dashly[®] | Lace Front Wig
- 15 Vice[®] | HD Lace Wig
- 16-17 Shear Muse[®] | Red Krush[®]

CLOSURES & HAIR PIECES

- 5 Empire[®] Bundles
- 6-7 Bare & Natural[®] | Bundle Deals
- 18-19 Instant Up & Down[®]
- 20 Lulu Pony[®]
- 21 Curls Kinks & Co.[®] | Clip-Ins

BRAIDING HAIR

- 22 X-Pression[®]
- 22-23 Lulutress[®]
- 24 Ruwa[®]

• S1B/350 and S1B/BG now available in Yaki lengths: 10", 12", 14", 16" and 18"

OTHER NEW COLORS:
• M280, M44, M51 now available in Yaki length: 14"

• ELECTRIC BLUE & HOT PINK now available in Yaki lengths: 16" & 18"

EMPIRE[®] Bundles

100% Virgin Human Hair

A NEW PRODUCT FROM A POWERHOUSE BRAND.

Empire[®] Bundles is coming to market with a full line of products, including wefted bundles along with HD Lace Closures and HD Lace Frontals; all made exclusively from 100% Virgin Human Hair.

When customers purchase 100% Human Hair, they expect natural gloss, fullness, and curl retention that can only come from healthy hair. To fulfill that expectation, we have launched 100% Virgin Human Hair Empire[®] Bundles.



FEATURES



EMPIRE[®] BUNDLES is made using only strong, healthy, 100% Virgin Human Hair. You can feel the strength and see its high-quality with the naked eye.



EMPIRE[®] BUNDLES is healthy even after bleaching and dyeing to satisfy the desire for unique colors and styles.



EMPIRE[®] BUNDLES has full-body movement. In addition, the precise stitching minimizes tangles and shedding.

PRODUCTS

New TEXTURES WEFTED BUNDLES

AVAILABLE STYLES:
**STRAIGHT • BODY WAVE
DEEP • LOOSE DEEP***

AVAILABLE LENGTHS:
**10", 12", 14", 16", 18",
20", 22", 24", 26", 28"**

AVAILABLE COLORS
(May Vary By Length & Texture):
**NATURAL, NATURAL
BLACK, 613, DARK RED**

New PRODUCT 4X4 HD LACE CLOSURES

AVAILABLE STYLES:
**STRAIGHT • BODY WAVE
DEEP 12" • LOOSE DEEP 12"***

AVAILABLE LENGTHS:
10", 12", 14", 16", 18"
(DEEP & LOOSE DEEP only available in 12")

AVAILABLE COLORS
(May Vary By Length & Texture):
**NATURAL, NATURAL BLACK,
613, DARK RED**

New PRODUCT 13X4 HD LACE FRONTAL

AVAILABLE STYLES:
STRAIGHT • BODY WAVE

AVAILABLE LENGTHS:
10", 12", 14", 16", 18"

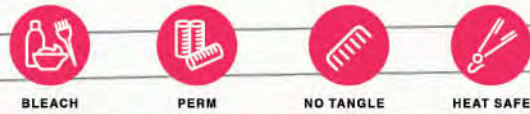
AVAILABLE COLORS
(May Vary By Length & Texture):
**NATURAL,
NATURAL BLACK**



* LOOSE DEEP Texture COMING SOON

BARE&natural
100% VIRGIN HUMAN HAIR

BACK TO SCHOOL BUNDLES



Make the smart choice when shopping for high grade bundle hair. Bare & Natural® performs well on every test: bleaching, dyeing and styling.

Bare & Natural® 4x4 HD Lace Closure Bundle Deal is always one of the best deals on the market. This double weft item is always full to the look and soft to the touch. It's a sweet deal to make any style come to life.



WELL CRAFTED

Soft 100% Virgin Human Hair carefully and neatly sewn on a double weft for a full look.



HEALTHY HAIR

Sourced from only the highest quality unprocessed human hair, for natural luster and movement.



4x4 HD LACE CLOSURE

Virtually Undetectable HD Lace closure with 4x4 parting area. 100% hand-tied with baby hairs along the hairline.

Back in stock!

Style:
LOOSE DEEP

Color:
NATURAL



New!

Style:
DEEP

Color:
NATURAL BLACK



3x bundles +

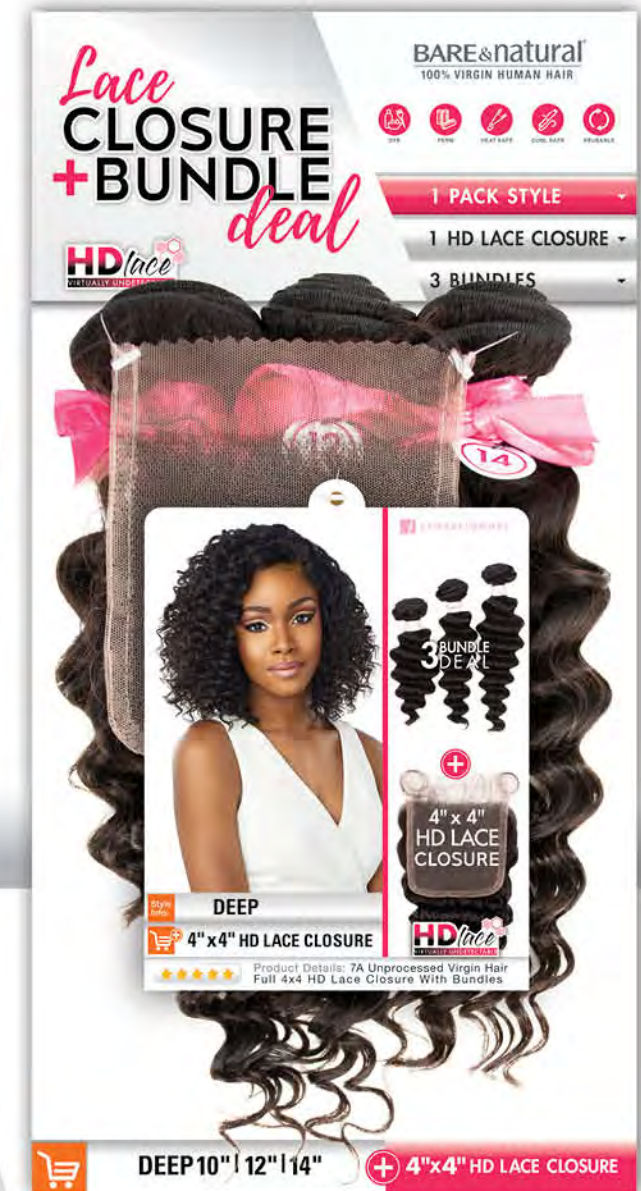
4X4 HD LACE CLOSURE



NEW 4X4 STYLES:
DEEP (NEW)
LOOSE DEEP (BACK IN STOCK)

AVAILABLE LENGTH COMBINATIONS:
10", 12", 14" • 12", 14", 16"
14", 16", 18" • 16", 18", 20" • 18", 20", 22"

AVAILABLE COLORS:
NATURAL, NATURAL BLACK



VICE® BUNDLES

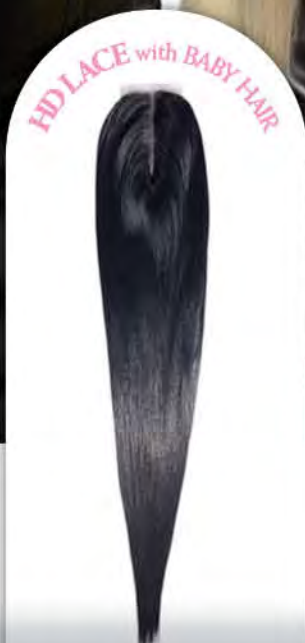
3X MULTI PACK

VICE® VALUE PACK
3 BUNDLES +
2x5
HD Lace Closure



Available Lengths: 18"/20"/22" and 26"/28"/30"
Available Colors: 1, 1B, 2, 613, BALAYAGE AUBURN,
BALAYAGE BLONDE, T2/27, T2/30, T2/BG

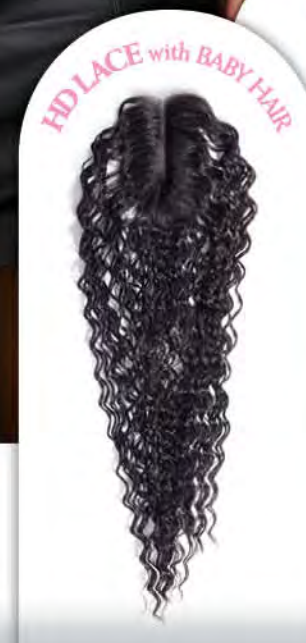
STRAIGHT
Lengths Shown:
26"/28"/30"
+ HD Lace Closure
Color Shown: 613



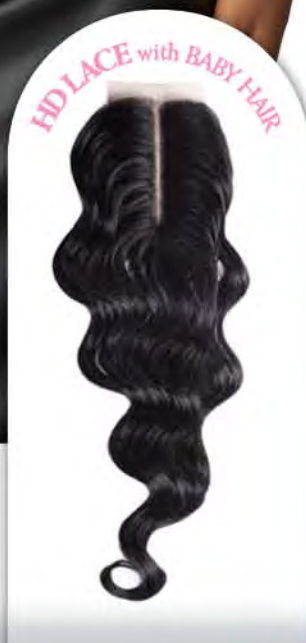
CRIMP
Lengths Shown:
18"/20"/22"
+ HD Lace Closure
Color Shown: 1



DEEP
Lengths Shown:
26"/28"/30"
+ HD Lace Closure
Color Shown: 2



BODY WAVE
Lengths Shown:
18"/20"/22"
+ HD Lace Closure
Color Shown: 1B



New!

New!

New!

New!



New!

New!



RASHANA

Available colors:
1, 1B, 2, BALAYAGE CARAMEL,
BALAYAGE CHOCOLATE,
BALAYAGE GOLD,
BALAYAGE HAZELNUT,
BALAYAGE MOCHA,
MONEY PIECE CARAMEL,
MONEY PIECE HAZEL,
MONEY PIECE SANDY BLONDE



New!



LYSHA

Available colors:
1, 1B, 2, BALAYAGE CARAMEL,
BALAYAGE GOLD,
BALAYAGE HAZELNUT,
FLAMBOYAGE AUBURN,
FLAMBOYAGE BLONDE,
FLAMBOYAGE CHOCOLATE,
FLAMBOYAGE MOCHA,
FLAMBOYAGE SAND



ELENA

Available colors:
1, 1B, 2, 613,
BALAYAGE CARAMEL,
BALAYAGE CHOCOLATE,
BALAYAGE GOLD,
BALAYAGE HAZELNUT,
BALAYAGE MOCHA,
T2/27, T2/30

-Cloud9-
SWISS LACE WIG
whatlace?
HAIRLINE ILLUSION LACE WIG

New!

butta lace®

from the makers of
whitlace?

Autumn Waves, NATURAL LAYERS

As the season shifts, shop and multiply your looks in sweet Butta Lace®. A fan favorite always available in plenty of trending shades and textures. Butta Lace® brings you beautiful possibilities with undetectable HD lace for that natural look.

VIRTUALLY
HD lace
UNDETECTABLE



GLAM WAVE 24"

(HUMAN HAIR & PREMIUM FIBER BLEND)
Available Colors: 1, 1B, 2, **BALAYAGE CARAMEL**,
BALAYAGE CHOCOLATE, BALAYAGE GOLD,
BALAYAGE HAZELNUT, BALAYAGE MOCHA,
T1B/GOLDEN BLONDE, T4/CHESTNUT BLONDE,
T4/WINE



BUTTA UNIT 20

(100% PREMIUM FIBER)
Available Colors: 1, 1B, 2, **BALAYAGE CARAMEL**,
BALAYAGE CHOCOLATE, BALAYAGE GOLD,
BALAYAGE HAZELNUT, BALAYAGE MOCHA,
T1B/4, T2/350



BUTTA UNIT 21

(100% PREMIUM FIBER)
Available Colors: 1, 1B, 2, **BALAYAGE CARAMEL**,
BALAYAGE CHOCOLATE, BALAYAGE GOLD,
BALAYAGE HAZELNUT, **BALAYAGE MOCHA**,
T1B/4, T2/350



100% PREMIUM FIBER | BUTTA LACE®

13.

fabulous FALL FINDS

Get long voluminous layers with **Vice®** and **Dashly®** brands' **HD Lace Wigs**. These fabulous Fall finds are on-trend with styles available in plenty of fun, fashionable colors. From effortless Balayage, to Chunky Highlights, and NEW head-turning Headband Highlights, this vast selection of colors are ideal for any season.

BEGINNER FRIENDLY • GLUELESS INSTALLATION
VIRTUALLY UNDETECTABLE HD LACE • DEEP PARTING

Safe Up To
350-400°F
100% PREMIUM FIBER

Safe Up To
350-400°F
100% PREMIUM FIBER

Safe Up To
350-400°F
100% PREMIUM FIBER



TREND ALERT!
HEADBAND HIGHLIGHT



**HD
lace**



**DASHLY®
LACE
UNIT 23**

AVAILABLE COLORS:
1, 1B, 2, BALAYAGE CARAMEL,
BALAYAGE CHOCOLATE, BALAYAGE GOLD,
BALAYAGE HAZELNUT, BALAYAGE MOCHA,
CHUNKY HIGHLIGHT 27, CHUNKY HIGHLIGHT 30,
CHUNKY HIGHLIGHT BLONDE, **T6/27613**



**VICE®
UNIT 12**

AVAILABLE COLORS:
1, 1B, 2, HEADBAND HIGHLIGHT 1/27,
HEADBAND HIGHLIGHT 1/PINK,
HEADBAND HIGHLIGHT 27/1,
HEADBAND HIGHLIGHT COPPER/1,
HEADBAND HIGHLIGHT RED/1,
T2/27, T2/30, T6/27613



CENTER PART

100% PREMIUM FIBER | SENSATIONNEL® HD LACE WIGS

15.

Color Shown: APPLE RED

TAKEISHA

Color Shown: APPLE RED

KAISHA

RED KRUSH®

Salon Inspired Cut & Color by Shear Muse®

Shades for Fall!

AUTUMN REDS!



MEET TAKEISHA...

Her waist-length, layered, straight strands will bring out your fun, flirty, and feminine side. With a sizzling variety of reds, she's full of personality.



MEET KAISHA...

Her striking blunt cut is as edgy as they come. With her red-hot color palette, Kaisha is a blazin' beauty that will turn heads everywhere she goes.

TAKEISHA & KAISHA AVAILABLE COLORS: 1, 1B, 2, APPLE RED, CARROT RED, CRIMSON RED, FIRE RED, GINGER RED, WINE RED

HD lace



100% PREMIUM FIBER | SHEAR MUSE®

17.

Instant UP & DOWN.



UD 12
Color Shown: 1

New!

New!



UD 13
Color Shown: 2

PACK INCLUDES
1 HALF WIG
1 PONY WRAP



One Of The Hottest Items On The Market Just Got Hotter With Two NEW Additions! This 1/2 Wig + Pony Wrap Combo Is All You Need For A Whole Lotta' Style!

Instant Up & Down® features a Drawstring Half Wig, and a Pony Wrap item in one pack. These items can be styled together or separately. The four styling options are:

- HALF UP HALF DOWN STYLE • UP-DO
- HALF WIG • WRAPPED PONYTAIL



4 STYLES IN 1 PACK

SCAN CODE FOR HOW-TO



Available Basic Colors: 1, 1B, 2, 4, Available Special Colors: 11B/4, 12/BG, 12/COPPER, 12/30, 12/27, 12/613

100% PREMIUM FIBER | INSTANT UP & DOWN®

Say Hello To The Newest Styles To Be Added To Our Fast Growing Lulu Pony® Brand.
VARIOUS CHOICES FOR ALL AND EVERY OCCASION • AFFORDABLE AND EASY TO MAINTAIN.



lulu pony



KARA

Available colors:
 1, **1B**, 2, 4, F1B/30,
 T2/27, T2/30, T2/BG



YAYA

Available colors:
 1, **1B**, 2, 4, F1B/30,
 T2/27, T2/30, T2/BG



HARA

Available colors:
 1, **1B**, 2, 4, F1B/30,
 T2/27, T2/30, T2/BG

9 | Textured
 PCS | Clip-ins

- 9"
1 PC
- 7"
2 PCS
- 5"
4 PCS
- 3"
2 PCS

The Curls Kinks & Co.® collection celebrates the versatility and styles that make natural hair so unique. For naturals who want to add volume or length, CKCO Clip-ins provides instant gratification with every "click". Turn up the volume with Move Maker's naturally tapered curls.

Style:
MOVE MAKER 14"
 Available Colors:
 1, **1B**, 2



- ADDS VOLUME & LENGTH
- BLENDS WITH NATURAL HAIR
- SECURE SILICONE LINED CLIPS

100% PREMIUM FIBER | CURLS KINKS & CO.®

X-Pression



Longer than ever braiding Hair.

ULTRA

6X PRE-STRETCHED BRAID 58"

AVAILABLE COLORS: 1, 1B, 2, 4, SM1B/27, SM1B/30

Lulutress



BUTTERFLY LOCS 36"

AVAILABLE COLORS: 1, 1B, 2, 4, T1B/27, T1B/30, T1B/BG

Lulutress



3X PASSION TWIST 36"

AVAILABLE COLORS: 1, 1B, 2, 4, T1B/27, T1B/30, T1B/BG

Lulutress



3X DISTRESSED LOCS 40"

AVAILABLE COLORS: 1, 1B, 2, 4, SM1B/27, SM1B/30, SM1B/BG

Model Style: 3X AFRO TWIST 16"
(Styled as: Distressed Locs)
Colors: SM1B/350 and 350



RUWWA[®]

Made With Aquatex[®] Fiber From Kanekalon[®]

Aquatex[®] and Kanekalon[®] are registered trademarks of Kaneka Corporation. © 2022 Kaneka Corporation. All rights reserved.

#SensationnelHair
©2022 Hair Zone, Inc.



WWW.SENSATIONNEL.COM