



SENSATIONNEL®

MAR/APR 2022

Spring
EDITION

#SensationnelHair



Blossom & Bloom in...

LUXURIOUS HD LACE WIGS

Bare & Natural® 15A HD LACE WIGS are made with pure, natural virgin hair raw material; one of the most luxurious bundle hair on the market. Spring into season with hair that has better ratio, long lasting curl retention and a softer touch.

Available Colors: NATURAL, NATURAL BLACK

BLEACH • PERM • DYE

15A GRADE 100% VIRGIN HUMAN HAIR

EAR-TO-EAR WITH 13" X 4" HD LACE PARTING AREA

180% DENSITY WITH PRE-PLUCKED HAIRLINE

FLEXIBLE MESH CAP WITH COMBS AND STRAPS



15A HD LACE WIG
STRAIGHT 22"
COLOR SHOWN: NATURAL BLACK

15A HD LACE WIG
DEEP 22"
COLOR SHOWN: NATURAL BLACK

15A HD LACE WIG
STRAIGHT 18"
COLOR SHOWN: NATURAL BLACK

FACTORY DIRECT
15A
UNPROCESSED
BUNDLE IMPORT

IN THIS ISSUE...

100% VIRGIN HUMAN HAIR

- 2-3 15A HD Lace Wig
- 4-5 12A HD Lace Wig
- 6-7 12A Weaving
12A HD Lace Frontal
12A HD Lace Closure
- 20 XV® Lace Closure

100% HUMAN HAIR

- 8-9 Empire® | Clip-In Bangs

HUMAN HAIR & PREMIUM FIBER BLEND

- 10 What Lace® | Butta Lace®

HD LACE WIGS

- 2-3 15A HD Lace Wig
- 4-5 12A HD Lace Wig
- 10 Empress | Shear Muse®
- 10-11 What Lace® | Butta Lace®

FULL WIGS & HEADBAND WIGS

- 12-13 Dashly® | Headband Wig & Bangs
- 14-15 Dashly® | Headband Wig

HAIR PIECES

- 6-7 12A HD Lace Frontal
12A HD Lace Closure
- 8-9 Empire® | Clip-In Bangs
- 12-13 Dashly® | Headband Wig & Bangs
- 20 XV® Lace Closure

BRAIDING HAIR

- 16 X-Pression®
- 17 Lulutress®
- 18-19 Ruwa®

16"

COLOR SHOWN: NATURAL BLACK



18"

COLOR SHOWN: NATURAL



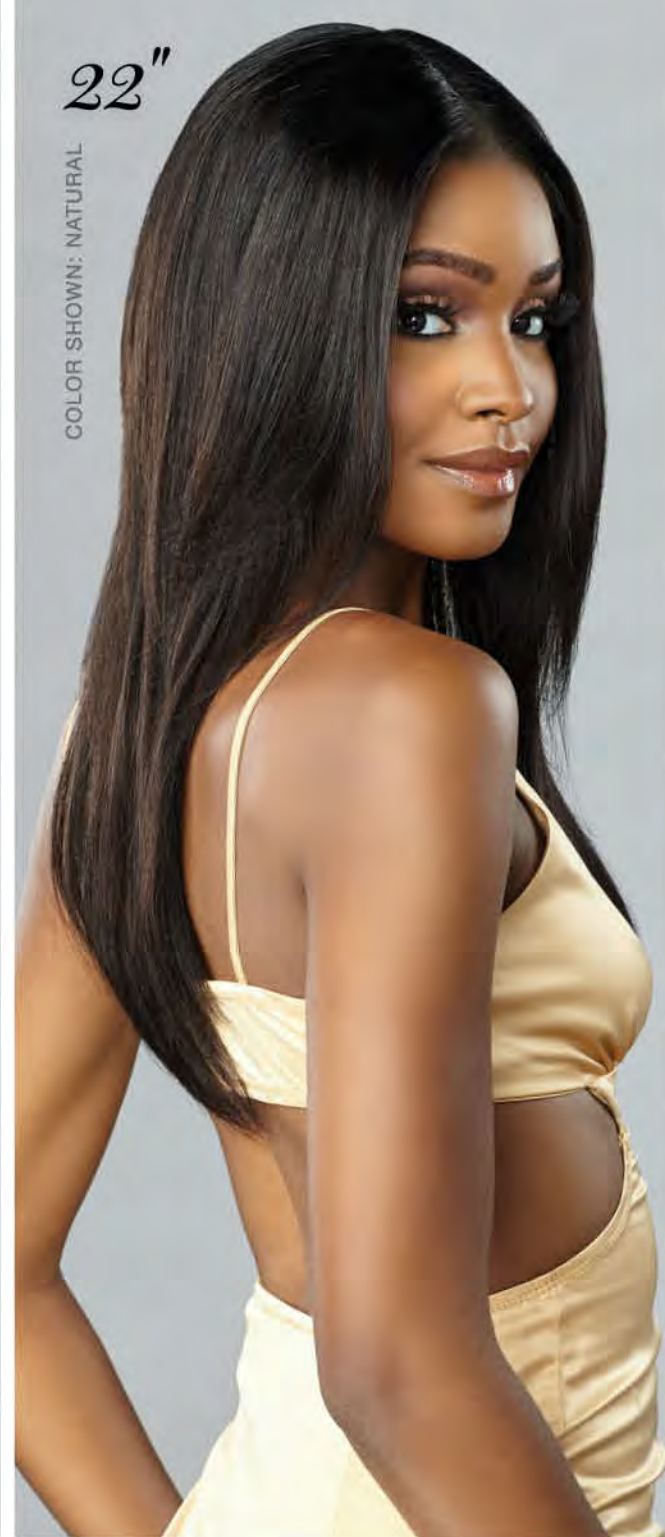
20"

COLOR SHOWN: NATURAL BLACK



22"

COLOR SHOWN: NATURAL

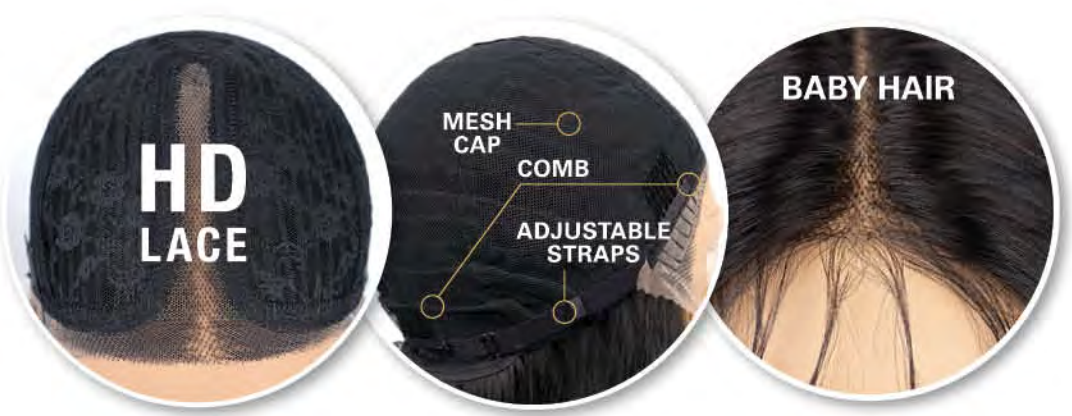


24"

COLOR SHOWN: NATURAL BLACK



New



Layered Lengths 12A HD LACE WIG

The little black dress of wigs is a classic, Natural Straight style. Our newest 12A HD LACE Wigs feature face-framing layers in lengths 16 through 24 inches. Go from daytime to date night with units that are crafted using 12A Grade 100% Virgin Human Hair; these HD lace wigs can be bleached, dyed, and styled using heat appliances too. The virtually undetectable HD lace and 5 inch deep hand-tied parting area ensure a beautiful blend and natural finished look.

STYLE: **STRAIGHT** AVAILABLE LENGTHS: **16" • 18" • 20" • 22" • 24"**
AVAILABLE COLORS: **NATURAL, NATURAL BLACK**



100% VIRGIN HUMAN HAIR | 12A HD LACE WIG

5.

BARE&natural
100% VIRGIN HUMAN HAIR
STRAIGHT



12A 3X MULTI BUNDLE

AVAILABLE STYLES:
3X STRAIGHT • 3X BODY WAVE

AVAILABLE LENGTH COMBINATIONS:
• 10", 12", 14" • 12", 14", 16"
• 14", 16", 18" • 16", 18", 20"
• 18", 20", 22"

12A 13X4 HD LACE FRONTAL

AVAILABLE STYLE:
STRAIGHT

AVAILABLE LENGTHS:
10" • 12" • 14"

12A 4X4 HD LACE CLOSURE

AVAILABLE STYLES:
• **STRAIGHT 12"**
• **BODY WAVE 12"**

12A 5X5 HD LACE CLOSURE

AVAILABLE STYLES:
STRAIGHT • BODY WAVE

AVAILABLE LENGTHS:
10" • 12" • 14" • 16" • 18"

BARE&natural
100% VIRGIN HUMAN HAIR
BODY WAVE



FACTORY DIRECT
12A
UNPROCESSED
BUNDLE IMPORT

New

AVAILABLE COLORS
(ALL STYLES):
NATURAL
NATURAL BLACK

HD LACE HD LACE
12A BUNDLES, FRONTS & CLOSURES.

Bare & Natural® 12A HD LACE Frontals and Closures are made with 12A Grade Virgin Human Hair for excellent performance in bleaching, perming and dyeing. The HD lace material blends with most skin-tones and is virtually undetectable. These frontals and closures can be paired with our many bundle weaving items for a flawless finish.

Hello FRINGE!

For fringe bangs without the commitment, style your look this season with Empire® 100% Human Hair Clip-In Bang Pieces.

CLIP-IN BANGS FEATURES:

100% HUMAN HAIR CAN BE STYLED WITH A CURLING OR FLAT IRON.

- Get The Perfect Bang Style Without Cutting Your Own Hair.
- Wear With Your Natural Hair Or Pair It Up With Ponytails, Buns And Other Hair Extension Items.
- Easy 3-Step Wear: Unclip, Clip, And Style.
- Has Two Combs In The Front And One Comb In The Back For Extra Secure Fit.



EMPIRE®

100% HUMAN HAIR

CLIP-IN BANGS



New!
CHINA BANG
AVAILABLE COLORS:
1, 1B, 2



New!
SIDE SWEEP BANG
AVAILABLE COLORS:
1, 1B, 2



100% HUMAN HAIR | EMPIRE® CLIP-IN BANGS



COMING SOON!

**BUTTA LACE®
BUTTA UNIT 22**
(100% PREMIUM FIBER)

AVAILABLE COLORS:
1, 1B, 2, 613,
BALAYAGE CARAMEL,
BALAYAGE CHOCOLATE,
BALAYAGE GOLD,
BALAYAGE HAZELNUT,
BALAYAGE MOCHA,
T2/27, T2/30



Warmer temps
**HD COOL
STYLES!**

Ease into the spring season with sleek and wavy looks by Sensationnel®. Try a little something new with these trending salon inspired **HD Lace Wigs**, in human hair blend and original premium fibers. Slay it this spring in gorgeous Butta Lace® and Shear Muse®!



**SHEAR MUSE®
BRYNN**
(100% PREMIUM FIBER)

AVAILABLE COLORS:
1, 1B, 2, 350, 613,
99J, BG, RED,
TH2/27, TH2/30



**BUTTA LACE®
BEACH WAVE 20"**
(HUMAN HAIR & PREMIUM FIBER BLEND)

AVAILABLE COLORS:
1, 1B, 2,
BALAYAGE CARAMEL,
BALAYAGE CHOCOLATE,
BALAYAGE GOLD,
BALAYAGE HAZELNUT,
BALAYAGE MOCHA,
T1B/GOLDEN BLONDE,
T4/CHESTNUT BLONDE,
T4/WINE



dashly®

Headband Wig & Bangs

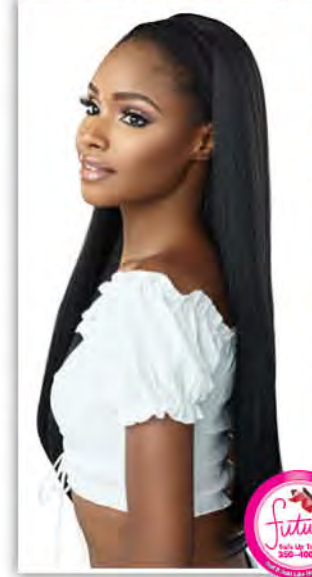
New!



HBB UNIT 3
Available Color:
1, 1B, 2, F1B/30, TH2/27,
TH2/30, TH2/BG

* WEAR WITH OR WITHOUT BANG PIECE

New!



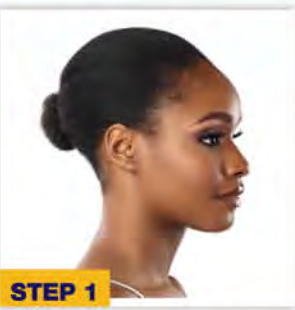
HBB UNIT 1
Available Color:
1, 1B, 2, F1B/30, T2/27,
T2/30, T2/BG

New!

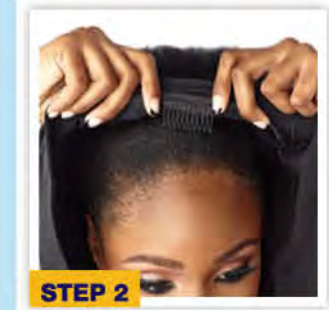


HBB UNIT 2
Available Color:
1, 1B, 2, F1B/30, T2/27,
T2/30, T2/BG

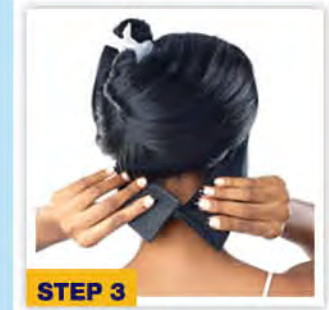
How To Install



STEP 1
Pull Your Hair Back Into a Low Ponytail or Bun.



STEP 2
Insert Front Comb, Hold the Cap Down, Insert the Back Comb.



STEP 3
Secure the Headband Using Velcro. Lay Your Edges and Style as Desired.



Scan Code for Tutorial!

100% PREMIUM FIBER | DASHLY® HEADBAND WIG & BANGS

"On The Go Styles"

100% PREMIUM FIBER | DASHLY® HEADBAND WIG

New!

New!



HB UNIT 4

Available Colors: 1, 1B, 2, F1B/30, T2/27, T2/30, T2/BG



HB UNIT 5

Available Colors: 1, 1B, 2, F1B/30, T2/27, T2/30, T2/BG



HB UNIT 1

Available Colors: 1, 1B, 2, F1B/30, T2/27, T2/30, T2/BG



HB UNIT 2

Available Colors: 1, 1B, 2, F1B/30, TH2/27, TH2/30, TH2/BG



HB UNIT 3

Available Colors: 1, 1B, 2, F1B/30, T2/27, T2/30, T2/BG

dashly® Headband Wig



HEADBAND WITH VELCRO



SPECIAL COLORS (May Vary By Style)



100% PREMIUM FIBER (Heat Safe up to 350-400°F)



**2X X-PRESSION®
PRE-STRETCHED
BRAID 48"**

AVAILABLE COLORS:
1, 1B, 2, 4, 27, 30, 33, 350,
613, 99J, BG, BLUE, LILAC,
MATTE GRAY, PERIWINKLE,
RAINBOW, RED, VINTAGE ROSE,
M44, M51, M1B/27, M1B/30,
M1B/BG, SM1B/27, SM1B/30,
SM1B/33, SM1B/350, SM1B/BG,
T1B/27, T1B/30, T1B/613, T1B/BG,
T1B/BLU, T1B/EMERALD,
T1B/MUSTARD, T1B/PUR,
T1B/RED, 3T1B/DBLUE/LBLUE,
3T1B/LPINK/BLUE,
3T1B/MINT/LMINT,
3T1B/PURPLE/PINK,
3T2/27/613, 3T2/30/27,
3TBLUE/LBLUE/LAVENDER,
3TPURPLE/PINK/LPINK

**3X X-PRESSION®
PRE-STRETCHED
BRAID 58"**

AVAILABLE COLORS:
1, 1B, 2, 4, 27, 30, 350,
613, 99J, BG, BLUE,
PURPLE, RAINBOW, RED,
SM1B/27, SM1B/30, SM1B/350,
SM1B/BG, T1B/27, T1B/30,
T1B/613, T1B/BG, T1B/BLU,
T1B/EMERALD, T1B/MUSTARD,
T1B/PUR, T1B/RED,
3T1B/DBLUE/LBLUE,
3T1B/LPINK/BLUE,
3T1B/MINT/LMINT,
3T1B/PURPLE/PINK,
3T2/27/613, 3T2/30/27,
3TBLUE/LBLUE/LAVENDER,
3TPURPLE/PINK/LPINK

#SPRINGTRENDS
**THE
BLUE-
PRINT**

X-Pression®

Often imitated,
never duplicated;
nothing beats the
authentic and original
X-pression® braid.



#SPRINGTRENDS
**LADY
LONG
LOCS**

Lulutress®

Thigh-touching tresses
are trending for Spring.
Channel your inner Rapunzel
with these pre-looped, super
long locs from Lulutress®.



New

**3X DISTRESSED
LOCS 40"**

AVAILABLE COLORS:
1, 1B, 2, 4, SM1B/27,
SM1B/30, SM1B/BG

**BUTTERFLY
LOCS 36"**

AVAILABLE COLORS:
1, 1B, 2, 4, T1B/27,
T1B/30, T1B/BG

100% PREMIUM FIBER | LULUTRESS®



INSTANT LOCKING



LIGHT WEIGHT & SOFT



WATER REPELLENT



FLAME RETARDANT



FAST DRYING



HOT WATER SET



RUWA®

Made With Aquatex® Fiber From Kanekalon®

Model is wearing:
3X PRE-STRETCHED 24" Color: SM1B/27

© 2022 Hair Zone, Inc. | Aquatex® and Kanekalon® are registered trademarks of Kaneka Corporation.
© 2022 Kaneka Corporation. All rights reserved.



100% KANEKALON® AQUATEX® FIBER | RUWA®

XV

VIRGIN HAIR

V

®

XV® 4X4 LACE CLOSURE

Available styles:

STRAIGHT 12" & BODY WAVE 12"

Available Color: Natural



XV • 100% VIRGIN HUMAN HAIR •
HAIR GRADE:
15A