



SENSATIONNEL®

JUL/AUG 2022

Summer
EDITION

#SensationnelHair



IN THIS ISSUE...

100% VIRGIN HUMAN HAIR

- 4-5 Bare & Natural® | Bundle Deals
- 6 Empire® Bundles

100% HUMAN HAIR

- 7 Empire® | Clip-in Bangs

HUMAN HAIR & PREMIUM FIBER BLEND

- 15 What Lace® | Butta Lace®

100% PREMIUM FIBER

- 8-9 Vice® Bundles
- 10 Cloud 9™ | What Lace®
- 11 Dashly® | Lace Front Wig
- 12-13 Shear Muse® | Red Krush®
- 14 What Lace® | Butta Lace®
- 16-17 Curls Kinks & Co.® | Clip-Ins
- 18-19 Instant Weave® | Drawstring
- 20-21 Lulu Pony®

HD LACE WIGS

- 10 Cloud 9™ | What Lace®
- 11 Dashly® | Lace Front Wig
- 12-13 Shear Muse® | Red Krush®
- 14-15 What Lace® | Butta Lace®

HALF WIGS & PONYTAILS

- 18-19 Instant Weave® | Drawstring
- 20-21 Lulu Pony®

HAIR PIECES & CLOSURES

- 4-5 Bare & Natural® | Bundle Deals
- 7 Empire® | Clip-In Bangs
- 16-17 Curls Kinks & Co.® | Clip-Ins

BRAIDING HAIR

- 2-3 Ruwa®
- 22 X-Pression®
- 23 Lulutress®
- 24 Lulu Mini™

Always on the SUNNY SIDE!

Summer is a state of mind and **Ruwa®** by **Sensationnel®** has the vibe to put you there! **Ruwa®** braiding hair is created with 100% **Aquatex®** fiber from **Kanekalon®**. Not only is it light-weight and soft to touch, it's treated with an advanced hydrophobic coating which naturally repels water and moisture, making it your perfect summer companion! Whether you're enjoying a hot day at the beach or relaxing by the pool, **Ruwa®** will always keep you summer-ready.

Model is wearing:

- 3X PRE-STRETCHED 18" Color: 1B
- 3X PRE-STRETCHED 24" Color: BLUE

RUWA®

Made With Aquatex® Fiber From Kanekalon®



© 2022 Hair Zone, Inc. | Aquatex® and Kanekalon® are registered trademarks of Kaneka Corporation.
© 2022 Kaneka Corporation. All rights reserved.

BARE&natural[®]
**3X MULTI
 VIRGIN
 HAIR**



HD LACE
bundle deals!



New
 PRODUCT

**5 X 5 HD LACE
 CLOSURE +
 3 BUNDLES**



100% VIRGIN HUMAN HAIR



3 BUNDLES +
13X4
frontal



AVAILABLE 13 X 4 STYLES:
STRAIGHT AND BODY WAVE
 AVAILABLE LENGTH COMBINATIONS:
 10", 12", 14" • 12", 14", 16"
 14", 16", 18" • 16", 18", 20"
 18", 20", 22"
 AVAILABLE COLORS:
NATURAL, NATURAL BLACK

100% VIRGIN HUMAN HAIR



3 BUNDLES +
5X5
closure



New!

AVAILABLE 5 X 5 STYLES:
STRAIGHT AND BODY WAVE
 AVAILABLE LENGTH COMBINATIONS:
 10", 12", 14" • 12", 14", 16"
 14", 16", 18" • 16", 18", 20"
 18", 20", 22"
 AVAILABLE COLORS:
NATURAL, NATURAL BLACK

100% VIRGIN HUMAN HAIR



3 BUNDLES +
4X4
closure



AVAILABLE 4 X 4 STYLES:
STRAIGHT AND BODY WAVE
 AVAILABLE LENGTH COMBINATIONS:
 10", 12", 14" • 12", 14", 16"
 14", 16", 18" • 16", 18", 20"
 18", 20", 22"
 AVAILABLE COLORS:
NATURAL, NATURAL BLACK

100% VIRGIN HUMAN HAIR | BARE & NATURAL[®]

5.

100% VIRGIN
10A
HUMAN HAIR



VIRGIN HUMAN HAIR *New* PRODUCT

SOFT & SMOOTH TEXTURE LONG LASTING 10A GRADE TANGLE FREE & SHED FREE

EMPIRE Bundles

For Hair That's Stunningly Soft and Smooth, Crown Yourself with Empire® Bundles.



BLEACH/DYE PERM HEAT SAFE

AVAILABLE STYLES:

STRAIGHT • BODY WAVE

AVAILABLE LENGTHS:

**10", 12", 14", 16", 18",
20", 22", 24", 26", 28"**

AVAILABLE COLORS (May Vary By Length):

**NATURAL, NATURAL BLACK,
613, DARK RED**

Clip-in BANGS

For fringe bangs without the commitment, style your look this season with Empire® 100% Human Hair Clip-In Bang Pieces.

CLIP-IN BANGS FEATURES:

100% HUMAN HAIR CAN BE STYLED WITH A CURLING OR FLAT IRON.

- Get The Perfect Bang Style Without Cutting Your Own Hair
- Wear With Your Natural Hair Or Pair It Up With Ponytails, Buns And Other Hair Extension Items
- Easy 3-Step Wear: Unclip, Clip, And Style
- Has Two Combs In The Front And One Comb In The Back For Extra Secure Fit

AVAILABLE STYLES:

CHINA BANG

SIDE SWEEP BANG

AVAILABLE COLORS:

1, 1B, 2



100% HUMAN HAIR | EMPIRE®

7.

New!

VICE® BUNDLES

100% PREMIUM FIBER



STRAIGHT

Length Shown: 36" Color: 2



BODY WAVE

Length Shown: 24" Color: 1



CRIMP

Length Shown: 30" Color: 2



DEEP

Length Shown: 36" Color: 1B



SEW IN



THE IDEAL
ponytail
weave



PONY
TAIL

Virgin hair dupe **DONE RIGHT!**

When one kind of Vice® is just not enough anymore, we bring you Vice® Bundles. 100% Premium Fiber with a virgin hair look and feel. It's the perfect virgin hair likeness now available in four affordable styles. It just keeps getting Hotter with Vice®.

Ideal for: SEW-IN • QUICK WEAVE • PONYTAIL

Available Length: 24", 30", 36" Available Colors: 1, 1B, 2, 4, 27, 30, 350, 613, BG

100% PREMIUM FIBER | VICE® BUNDLES

9.

GET THE LATEST LOOKS *we love...*

With popular cuts, styles, and colors, What Lace?® and Dashly® are always in demand. Versatile looks in a variety of available shades to keep you lookin' cool all summer long. Friendly reminder to search #sensationnelhair to see many of our on-trend styles.

*Color Tip:
Balayage colors work great with
face framing styles.*



New!



JAYLA

Available colors:
1, 1B, 2, 613,
BALAYAGE CARAMEL,
BALAYAGE CHOCOLATE,
BALAYAGE GOLD,
BALAYAGE HAZELNUT,
BALAYAGE MOCHA,
T2/27, T2/30



New!



LYSHA

Available colors:
1, 1B, 2, BALAYAGE CARAMEL,
BALAYAGE GOLD,
BALAYAGE HAZELNUT,
FLAMBOYAGE AUBURN,
FLAMBOYAGE BLONDE,
FLAMBOYAGE CHOCOLATE,
FLAMBOYAGE MOCHA,
FLAMBOYAGE SAND



New!



LEENA

Available colors:
1, 1B, 2, BALAYAGE CARAMEL,
BALAYAGE CHOCOLATE,
BALAYAGE GOLD,
BALAYAGE HAZELNUT,
BALAYAGE MOCHA,
T2/27, T2/30

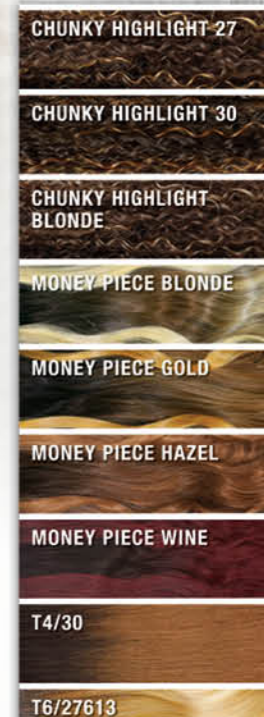


New!



LACE UNIT 22

Available colors:
1, 1B, 2, CHUNKY HIGHLIGHT 27,
CHUNKY HIGHLIGHT 30,
CHUNKY HIGHLIGHT BLONDE,
MONEY PIECE BLONDE,
MONEY PIECE GOLD,
MONEY PIECE HAZEL,
MONEY PIECE WINE,
T4/30, T6/27613



Coming Soon!



RED HOT...

These swoon-worthy vibrant reds, from our Shear Muse® Red Krush® Collection, are now available in two new styles. With virtually undetectable HD lace, these bold new looks are must-have additions to spice up your wig wardrobe.



MEET TAKEISHA...
Her waist-length, layered, straight strands will bring out your fun, flirty, and feminine side. With a sizzling variety of reds, she's full of personality.



MEET KAISHA...
Her striking blunt cut is as edgy as they come. With her red-hot color palette, Kaisha is a blazin' beauty that will turn heads everywhere she goes.



Coming Soon!

Style: KAISHA
Color: APPLE RED

Coming Soon!

Style: TAKEISHA
Color: CRIMSON RED

AVAILABLE STYLES:
KAISHA & TAKEISHA

AVAILABLE COLORS: 1, 1B, 2, APPLE RED, CARROT RED, CRIMSON RED, FIRE RED, GINGER RED, WINE RED



KAISHA

TAKEISHA

HD lace

100% PREMIUM FIBER | SHEAR MUSE®

New!

butta lace

from the makers of
whatlace?

Summer Melt WITH BUTTA!

From the Maker's of What Lace?, melt this summer with the latest Butta Lace® HD Lace styles. Made for any summer day or summer night, these sun kissed wave styles have plenty of glam appeal.



BUTTA UNIT 26 (100% PREMIUM FIBER)

Available Colors:
1, 1B, 2, 613, BALAYAGE CARAMEL,
BALAYAGE CHOCOLATE,
BALAYAGE FIERY RED,
BALAYAGE GOLD,
BALAYAGE HAZELNUT,
BALAYAGE MOCHA,
BALAYAGE SUNKISSED



BUTTA UNIT 25 (100% PREMIUM FIBER)

Available Colors:
1, 1B, 2, BALAYAGE CARAMEL,
BALAYAGE CHOCOLATE,
BALAYAGE GOLD,
BALAYAGE HAZELNUT,
BALAYAGE MOCHA,
MONEY PIECE BLONDE,
MONEY PIECE WINE,
T4/30, T6/27613



WATER WAVE 16" (HUMAN HAIR & PREMIUM FIBER BLEND)

Available Colors:
1, 1B, 2, BALAYAGE CARAMEL,
BALAYAGE CHOCOLATE,
BALAYAGE GOLD,
BALAYAGE HAZELNUT,
BALAYAGE MOCHA,
T1B/GOLDEN BLONDE,
T4/WINE



GLAM WAVE 24" (HUMAN HAIR & PREMIUM FIBER BLEND)

Available Colors:
1, 1B, 2, BALAYAGE CARAMEL,
BALAYAGE CHOCOLATE,
BALAYAGE GOLD,
BALAYAGE HAZELNUT,
BALAYAGE MOCHA,
T1B/GOLDEN BLONDE,
T4/CHESTNUT BLONDE,
T4/WINE

HUMAN HAIR & PREMIUM FIBER BLEND | BUTTA LACE®

9 PCS | Textured Clip-ins

- 9" 1 PC
- 7" 2 PCS
- 5" 4 PCS
- 3" 2 PCS

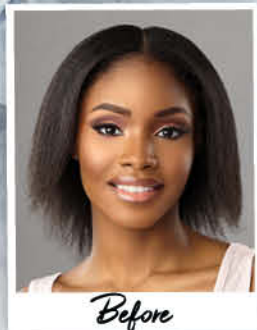
We just CLICK!

When you're on-the-go but do not want to compromise your natural look and style, then Curls Kinks & Co® Clip-ins is your match. Each pack contains nine easy-to-install weft pieces at various widths. Designed to mimic natural hair, they are full bodied, lightweight, and textured just right.

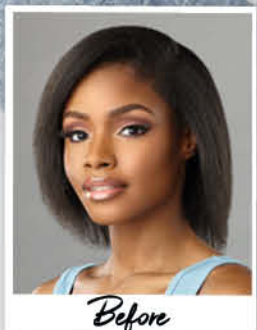
- ADDS VOLUME & LENGTH
- BLENDS WITH NATURAL HAIR
- SECURE SILICONE LINED CLIPS



EACH STYLE AVAILABLE IN COLORS: 1, 1B & 2



ALPHA WOMAN 18"
Color Shown: 1B



DREAM CHASER 14"
Color Shown: 2



New!
MISS INDEPENDENT 18"
Color Shown: 2



Instant WEAVE[®] DRAWSTRING

New!

Styled as:
HALF WIG

New!

Styled as:
UPDO



IWD 12
Color Shown: T2/COPPER

IWD 11
Color Shown: 1B

2-IN-1 INSTANT WEAVE[®] DRAWSTRING **BEAT The HEAT**

Stay cool with the pull of a string! Our multi-functional Instant Weave[®] Drawstring brand, features **half wigs with a drawstring cap that can be worn as a half wig or an up-do.** Various textures and styles are available in basics, highlights, and two-toned colors.

Styled as:
HALF WIG

Styled as:
UPDO



IWD 1 Color Shown: 2

Styled as:
HALF WIG

Styled as:
HALF WIG

Styled as:
HALF WIG



IWD 2 Color Shown: 2

IWD 3 Color Shown: 1B

IWD 4 Color Shown: 2

Styled as:
HALF WIG

Styled as:
HALF WIG

Styled as:
HALF WIG

Styled as:
HALF WIG

Styled as:
HALF WIG

Styled as:
HALF WIG



IWD 5 Color Shown: 1B

IWD 6 Color Shown: T2/27

IWD 7 Color Shown: 2

IWD 8 Color Shown: 2

IWD 9 Color Shown: 1B

IWD 10 Color Shown: TH2/30

IWD 1, IWD 2, IWD 3, IWD 4, IWD 5, IWD 6, IWD 8, IWD 9, IWD 11, IWD 12 Available Color: 1, 1B, 2, 4, T1B/4, T2/27, T2/30 T2/BG, T2/COPPER

IWD 7, IWD 10 Available Color: 1, 1B, 2, 4, T1B/4, TH2/27, TH2/30, TH2/BG, TH2/COPPER

New!
TIMI

New!
FIFI

21
STYLES
AND COUNTING...

lulu pony

New!

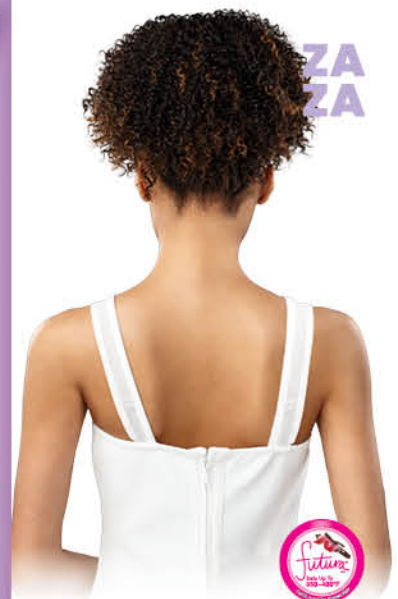
New!

New!

DANA

VIKI

SIMI



ZAZA



BIBI



LI LI



KIKI



JU JU



LALA



MIMI



NINI



KOKO



LOLO

JO JO



NANA



DIDI



CICI



GIGI



SUSA

Available colors (May Vary By Style): 1, 1B, 2, 4, F1B/30, T2/27, T2/30, T2/BG, TH2/27, TH2/30, TH2/BG

100% PREMIUM FIBER | LULU PONY®

21.



X-PRESSION®



Let Your Hair Speak For Itself. X-Pression® Braids Are Ideal For Creating Unique, Ultra-stylish Looks. Enjoy both quality and quantity, with our recently released pre-stretched 6X multi-pack.

6X X-PRESSION® PRE-STRETCHED BRAID 58"
 AVAILABLE COLORS:
 1, 1B, 2, 4,
 SM1B/27, SM1B/30



Lulutress® Is The Answer To Your Pre-Looped, Protective Style Needs. Our ever-popular *Passion Twists* are back and longer than ever. Turn heads all summer long with these 36" statement twists.

3X PASSION TWIST 36"
 AVAILABLE COLORS:
 1, 1B, 2, 4, T1B/27, T1B/30, T1B/BG

LULUTRESS®

100% PREMIUM FIBER | LULUTRESS®

23.



Lulu Mini™



- SAFE FLAME RETARDANT HIGH QUALITY FIBER
- AFFORDABLE AND EASY TO MAINTAIN
- SOFT AND EASY ON MOMS HANDS
- GREAT FOR TENSION-FREE STYLING

(FULLY-FOLDED)
2X BUBBLE CURL 10"

Colors Shown: 1B, T1B/30

(PRE-LOOPED)
2X CANDY TWIST 8"

Colors Shown: 2

Each style available in colors:
1, 1B, 2, 4, 27, 30, BG,
T1B/27, T1B/30, T1B/BG



(FULLY-FOLDED)
2X DEEP WAVE 10"

Color Shown: 1B



(PRE-LOOPED)
2X PASSION TWIST 10"

Color Shown: 2



(FULLY-FOLDED)
2X BOHEMIAN 10"

Color Shown: 1B



(FULLY-FOLDED)
2X WATER WAVE 10"

Color Shown: 2