



SENSATIONNEL®

SEP/OCT 2021

Autumn

EDITION

#SensationnelHair



IN THIS ISSUE...

100% VIRGIN HUMAN HAIR

- 2-3 15A HD Lace Wig
- 4-5 12A Wet & Wavy
- 6-7 10A Headband Wig

100% HUMAN HAIR & PREMIUM BLEND

- 9 What Lace® | Butta Lace®

HD LACE WIGS

- 8-9 Empress | Shear Muse®
- 9 Cloud 9™ | What Lace®
- 9 Cloud 9™ | Braided
- 9 What Lace® | Butta Lace®
- 10-11 Shear Muse® | Red Krush™
- 12 Dashly® | Lace Front Wig

FULL WIGS & HALF WIGS

- 6-7 10A Headband Wig
- 13 Instant Weave® | Drawstring

HAIR PIECES & PONYTAILS

- 13 Instant Weave® | Drawstring
- 14-15 Lulu Pony™

BRAIDING HAIR

- 16-17 Lulu Mini™ | Kids Braid
- 17 X-Pression® | Kids Braid
- 18-19 Ruwa®
- 19 Lulutress®
- 20 X-Pression®



STYLE NAME:
KINKY CURLY 16"
COLOR SHOWN: NATURAL



STYLE NAME:
BODY WAVE 24"
COLOR SHOWN: NATURAL



STYLE NAME:
LOOSE WAVE 24"
COLOR SHOWN: NATURAL

New!

HD LACE WIG
100% VIRGIN HUMAN HAIR

FALL IN LOVE WITH *luxurious* HD LACE WIGS

Bare & Natural® 15A HD LACE WIGS are made with pure, natural virgin hair raw material; one of the most luxurious bundle hair in the market. Fall in love with hair that has better ratio, long lasting curl retention and a softer touch.

AVAILABLE COLORS: NATURAL, NATURAL BLACK

BLEACH • PERM • DYE

15A GRADE 100% VIRGIN HUMAN HAIR

EAR-TO-EAR WITH 13" X 4" HD LACE PARTING AREA

180% DENSITY WITH PRE-PLUCKED HAIRLINE

FLEXIBLE MESH CAP WITH COMBS AND STRAPS



THE ULTIMATE Wet & Wavy BUNDLE COLLECTION

Wear It Straight Or Wear It Curly After Wet!
12A Wet & Wavy collection is available in a versatile range from **4x4 Lace Closures** to **Single Bundle Packs**, and **3X Multi Bundle Packs**. Made with 100% Virgin Human Hair, this hair performs exceptionally well with bleach or dye.

SINGLE BUNDLE WVG (WET & WAVY)
AVAILABLE STYLES: **BOHEMIAN • DEEP • KINKY BOHEMIAN**
AVAILABLE LENGTHS: **10", 12", 14", 16", 18"**

HD 4X4 LACE CLOSURES (WET & WAVY)
AVAILABLE STYLES: **BOHEMIAN 12" • DEEP 12" • KINKY BOHEMIAN 12"**

3X MULTI BUNDLE (WET & WAVY)
AVAILABLE STYLES: **3X BOHEMIAN • 3X DEEP**
AVAILABLE LENGTHS: **10", 12", 14" • 12", 14", 16" • 14", 16", 18" • 16", 18", 20" • 18", 20", 22"**

AVAILABLE COLORS: **NATURAL, NATURAL BLACK**



KINKY BOHEMIAN
12A Wet & Wavy (After Wet)
Color Shown: NATURAL
Length Shown: 16"



DEEP
12A Wet & Wavy (After Wet)
Color Shown: NATURAL BLACK
Length Shown: 10"



BOHEMIAN
12A Wet & Wavy (After Wet)
Color Shown: NATURAL
Length Shown: 18"



FACTORY DIRECT
12A
UNPROCESSED
BUNDLE IMPORT

WET & WAVY

- 12A GRADE WET & WAVY BUNDLE HAIR
- CAN WEAR AS STRAIGHT OR CURLY
- CAN BLEACH OR DYE TO GIVE COLOR

New!

FACTORY DIRECT
10A
UNPROCESSED
★★★★★
BUNDLE IMPORT

New!

Styling MADE SIMPLE

Headband Wigs Are On-the-go Styles That Are Functional, Chic, And Great For Any Occasion. The headband feature takes the guess-work out of styling; no blending, no gluing, no problem! Designed using 10A grade, Unprocessed 100% Virgin Human Hair with a cool-fit headband, it's high quality bundle hair made simple.

AVAILABLE COLORS: NATURAL, NATURAL BLACK

- BLEACH • PERM • DYE
- 10A Grade Virgin Human Hair With An Attached Headband.
- Headband Is Made With Cool-Fit Fabric That Actively Pulls Heat From Your Scalp.
- Adjustable Straps to Fit Various Head Sizes.
- Combs For Extra Security.



Style Name:
OCEAN WAVE 22"
Color Shown: Natural Black

Style Name:
BODY WAVE 24"
Color Shown: Natural



BOHEMIAN 14"
Color Shown: Natural Black



STRAIGHT 14"
Color Shown: Natural Black



LOOSE DEEP 14"
Color Shown: Natural Black



Pull Up To Campus In Style
With These HD Lace Wig Units!
Available in various colors and
lengths, these units are sure to
make a great first impression.
Of these featured brands, there's
sure to be something for every
skill set and price point.

Skip your trip to the salon with
the easy to wear **Cloud 9™ Braided**
and **Shear Muse®** brands. For an
elevated look, try **What Lace?®** or
Butta Lace® with pre-customized,
wider parting areas and natural
density hairlines.



SHEAR MUSE®
100% PREMIUM FIBER

RONAE
AVAILABLE
COLORS:
1, 1B, 2, 350, 613,
99J, BG, RED,
TH2/27, TH2/30



WHAT LACE?®
100% PREMIUM FIBER

CHELSEA
AVAILABLE COLORS:
1, 1B, 2, BALAYAGE CARAMEL,
BALAYAGE CHOCOLATE,
BALAYAGE GOLD,
BALAYAGE HAZELNUT,
BALAYAGE MOCHA,
T2/27, T2/30, T6/27613



BUTTA LACE®
100% HUMAN HAIR
& PREMIUM BLEND

BOB 12"
AVAILABLE COLORS:
1, 1B, 2, **BALAYAGE CARAMEL**,
BALAYAGE CHOCOLATE,
BALAYAGE GOLD,
BALAYAGE HAZELNUT,
BALAYAGE MOCHA,
T2/27, T2/30, T6/27613



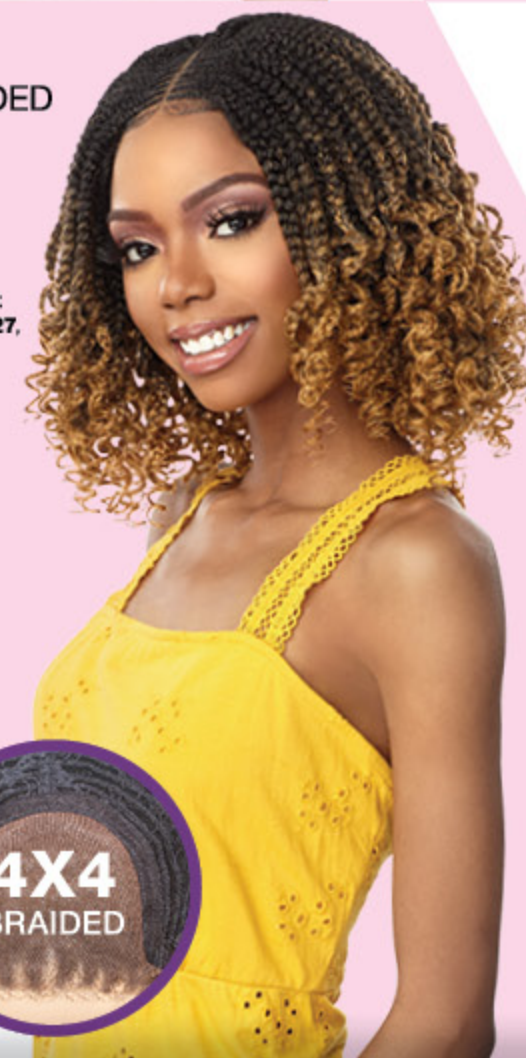
SHEAR MUSE®
100% PREMIUM FIBER

MALI
AVAILABLE COLORS:
1, 1B, 2, 350, 613,
99J, BG, RED,
TH2/27, TH2/30



CLOUD 9™ BRAIDED
100% PREMIUM FIBER

**FEED-IN
BOX BRAID
TWIST 12"**
AVAILABLE COLORS:
1, 1B, 2, 613, **T1B/27**,
T1B/30, T1B/BG



New RED KRUSH™

Salon Inspired Cut & Color by Shear Muse®

It's Time To Spice Things Up A Bit With The New "Red Krush™" Color Collection From Shear Muse®. These red shades are created for the color fanatics with passionate, fiery personalities. If you want to turn up the heat with Fire Red or wind down with Wine Red, you are sure to find a shade that compliments your taste.



AVAILABLE STYLES:
KIMORA & SALISHA

AVAILABLE COLORS: 1, 1B, 2, APPLE RED, CARROT RED, CRIMSON RED, FIRE RED, GINGER RED, WINE RED



KIMORA

SALISHA

HD lace



Style:

LACE UNIT 20

Available Colors:

1, 1B, 2, CHUNKY HIGHLIGHT 27,
CHUNKY HIGHLIGHT 30,
CHUNKY HIGHLIGHT BLONDE, T2/27,
T2/30, **T4/DIRTY BLONDE**, T6/27613



Style:

LACE UNIT 21

Available Colors:

1, 1B, 2, CHUNKY HIGHLIGHT 27, CHUNKY HIGHLIGHT 30,
CHUNKY HIGHLIGHT BLONDE, MONEY PIECE CARAMEL,
MONEY PIECE HAZEL, T4/DIRTY BLONDE, T6/27613



HD
lace

Fall
FASHION
IN A DASH

You can have amazing hair all season, thanks to Dashly® Lace Front Wig. With affordable prices, trendy styles and fashion forward colors, make Dashly® Lace Front Wigs an essential addition to your wig stash.



Styled as:
HALF WIG

Style:

IWD 10

Available Colors:

1, 1B, 2, 4, T1B/4,
TH2/27, **TH2/30**,
TH2/BG, TH2/COPPER

Styled as:
HALF WIG



MULTI FUNCTIONAL

2-IN-1

Drawstring Styles

Our Instant Weave® Drawstring brand, features multi-functional half wigs with a drawstring cap that can be worn as a half wig or an up-do. Various textures and styles are available in basics, highlights, and two-toned colors.



Style:

IWD 9

Available Colors:

1, **1B**, 2, 4, T1B/4, T2/27,
T2/30, T2/BG, T2/COPPER



Styled as:
UPDO



Instant Weave
IWD 10



Styled as:
UPDO



Instant Weave
IWD 9



lulu pony™

QUICK. SIMPLE. STYLISH.

These hassle-free ponytails take the guess work out of styling so you can get to studying. Our new Lulu Pony™ hair pieces are full of personality to get you ready for fall semester.



New!
KOKO
Color Shown:
1B

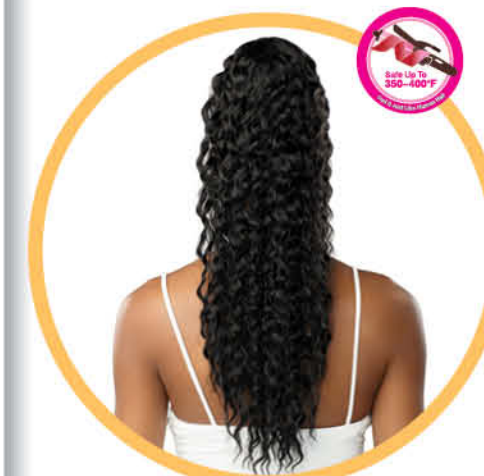


GIGI
Color Shown:
T2/30



SUSU
Color Shown:
T2/30

AVAILABLE COLORS:
1, 1B, 2, 4, F1B/30, T2/27, T2/30, T2/BG



KOKO



GIGI



SUSU

School Tip 
Ponytails are great for days when you are in a hurry



LULU MINI™
2X BOHEMIAN 10"
 Color Shown: 1B



LULU MINI™
2X DEEP WAVE 10"
 Color Shown: 1B



LULU MINI™
2X WATER WAVE 10"
 Color Shown: 2



LULU MINI™
2X PASSION TWIST 10"
 Color Shown: 2



X-PRESSION®
3X KIDS PRE-STRETCHED BRAID 28"
 Color Shown: 1B



New kids BRAIDS

lulu mini™

Available Styles:

- 2X PASSION TWIST 10" (Pre-Looped)
- 2X WATER WAVE 10" (Fully-Folded)
- 2X BOHEMIAN 10" (Fully-Folded)
- 2X DEEP WAVE 10" (Fully-Folded)

- Safe Flame Retardant High Quality Fiber
- Affordable & Easy to Maintain
- Soft & Easy on Moms Hands
- Great for Tension-Free Styling

Available Colors: 1, 1B, 2, 4, 27, 30, BG, T1B/27, T1B/30, T1B/BG

X-Pression®

Available Style: **3X KIDS PRE-STRETCHED BRAID 28"**

- 100% Kanekalon®, Flame Retardant
- Light & Soft Touch
- Pre-Stretched, Pre-Layered
- Hot Water Set

Available Colors: 1, 1B, 2, 4, SM1B/27, SM/1B/30, SM1B/350, SM1B/BG

RUWA®
Made With Aquatex® Fiber From Kanekalon®

Kanekalon®
AQUATEX

Model is wearing:
3X PRE-STRETCHED 24"
Colors: 1B, VINTAGE ROSE



NEW LULUTRESS®

POPULAR • PRETTY • PROTECTIVE

**(PRE-LOOPED)
2X BUTTERFLY
LOCS II 18"**

Available colors:
1, 1B, 2, 4, 27, 30,
350, 613, BG



Tips for Extended Wear

- Clip away frizz from locs
- Add in leave in moisturizer
- Add in Water Wave hair to cover up new growth

100% PREMIUM FIBER | LULUTRESS®

19.

X-Pression®

3X

PRE-STRETCHED BRAID

58"



#SensationnelHair

©2021 Hair Zone, Inc.



WWW.SENSATIONNEL.COM