



SENSATIONNEL®

NOV/DEC 2021

Holiday

EDITION

#SensationnelHair



X-Pression®

1. 3X PRE-STRETCHED BRAID 58"

AVAILABLE COLORS: 1, 1B, 2, 4, 27, 30, 350, 613, 99J, BG, BLUE, PURPLE, RAINBOW, RED, SM1B/27, SM1B/30, SM1B/350, SM1B/BG, T1B/27, T1B/30, T1B/613, T1B/BG, T1B/BLU, T1B/EMERALD, T1B/MUSTARD, T1B/PUR, T1B/RED, 3T1B/DBLUE/LBLUE, 3T1B/LPINK/BLUE, 3T1B/MINT/LMINT, 3T1B/PURPLE/PINK, 3T2/27/613, 3T2/30/27, 3TBLUE/LBLUE/LAVENDER, 3TPURPLE/PINK/LPINK

2. 2X PRE-STRETCHED BRAID 48"

AVAILABLE COLORS: 1, 1B, 2, 4, 27, 30, 33, 350, 613, 99J, BG, BLUE, LILAC, MATTE GRAY, PERIWINKLE, RAINBOW, RED, VINTAGE ROSE, M44, M51, M1B/27, M1B/30, M1B/BG, SM1B/27, SM1B/30, SM1B/33, SM1B/350, SM1B/BG, T1B/27, T1B/30, T1B/613, T1B/BG, T1B/BLU, T1B/EMERALD, T1B/MUSTARD, T1B/PUR, T1B/RED, 3T1B/DBLUE/LBLUE, 3T1B/LPINK/BLUE, 3T1B/MINT/LMINT, 3T1B/PURPLE/PINK, 3T2/27/613, 3T2/30/27, 3TBLUE/LBLUE/LAVENDER, 3TPURPLE/PINK/LPINK

3. 3X KIDS PRE-STRETCHED BRAID 28"

AVAILABLE COLORS: 1, 1B, 2, 4, SM1B/27, SM1B/30, SM1B/350, SM1B/BG



We are a little extra...
THANKFUL THIS YEAR!

The always iconic, authentic, Sensationnel® X-Pression® Braid features a new look! Crafted with 100% Kanekalon® Fibers, it maintains a vast selection of lengths, textures and colors inspiring plenty of options for anyone who desires a touch of glitz and glam. Plan your look this holiday season with Xpression® and as always *thank you* for making Xpression® the Stylist Choice of Braids!

IN THIS ISSUE...

100% VIRGIN HUMAN HAIR

- 4-5 15A
- 6-7 12A Full Wig
- 7 12A HD Lace Frontal

100% HUMAN HAIR

- 8 Empire® Lace Wig
- 8-9 Empire® Yaki

100% HUMAN HAIR & PREMIUM BLEND

- 11 What Lace® | Butta Lace™

HD LACE WIGS

- 4-5 15A HD Lace Wig
- 10-11 What Lace® | Butta Lace™
- 12-13 Vice®
- 14-15 Shear Muse® | Red Krush™

FULL WIGS

- 6-7 12A Full Wig

HAIR PIECES & PONYTAILS

- 7 12A HD Lace Frontal
- 16-17 Lulu Pony®

BRAIDING HAIR

- 16-17 X-Pression® | Kids Braid
- 2-3 X-Pression®
- 18-19 Lulutress®
- 20 Ruwa®

New!

HD LACE WIG
100% VIRGIN HUMAN HAIR

FALL IN LOVE WITH
luxurious
HD LACE WIGS

Bare & Natural® 15A HD LACE WIGS are made with pure, natural virgin hair raw material; one of the most luxurious bundle hair in the market. Fall in love with hair that has better ratio, long lasting curl retention and a softer touch.

AVAILABLE COLORS: NATURAL, NATURAL BLACK

BLEACH • PERM • DYE

15A GRADE 100% VIRGIN HUMAN HAIR

EAR-TO-EAR WITH 13" X 4" HD LACE PARTING AREA

180% DENSITY WITH PRE-PLUCKED HAIRLINE

FLEXIBLE MESH CAP WITH COMBS AND STRAPS



STYLE NAME: *Straight* 26



COLOR SHOWN: NATURAL BLACK

STYLE NAME: *Kinky Curly* 16



COLOR SHOWN: NATURAL

STYLE NAME: *Body Wave* 24



COLOR SHOWN: NATURAL

STYLE NAME: *Bob* 10



COLOR SHOWN: NATURAL BLACK

STYLE NAME: *Loose Wave* 24



COLOR SHOWN: NATURAL

New
PRODUCT

12A

FULL WIG

100% VIRGIN HUMAN HAIR

with
HAND-TIED LACE CROWN

- 12A Grade 100% Virgin Human Hair
- Hand-tied Crown For Natural Look • Contouring Mesh Cap
- Combs And Adjustable Straps For A Secure Fit

Available Colors: NATURAL, NATURAL BLACK



TOP VIEW



INTERIOR VIEW

• HAND-TIED LACE CROWN •



STYLE NAME: *Straight 20*

STYLE NAME: *Straight 26*



Start the season
With A Bang

Classic, Brow-Skimming Bangs Are Always In Style. These units feature a hand-tied lace crown to create a realistic, non-bulky finish; a must, for natural looking bangs.

Models Are Wearing Color: NATURAL BLACK

New
LENGTHS

Photo Finish HD LACE FRONTAL

Bare & Natural® 12A HD LACE Frontals Can Be Paired With Our Many Bundle Weaving Items For A Flawless Finish. Our straight texture is now available in a wider variety of lengths. These frontals are made with 12A Grade Virgin Human Hair for excellent performance in bleaching, perming, and dyeing.

STYLE: **STRAIGHT** AVAILABLE LENGTHS: **10", 12", 14"**
AVAILABLE COLOR: **NATURAL, NATURAL BLACK**



VIRTUALLY UNDETECTABLE HD LACE
100% VIRGIN HUMAN HAIR
PRE-PLUCKED WITH BABY HAIR
BLEACH • PERM • DYE

100% VIRGIN HUMAN HAIR | 12A FULL WIG & HD LACE FRONTAL

EMPIRE®

Steal the show this season with Our Argan Oil Infused, 100% Human Hair Brand, EMPIRE®. Try something new like an edgy pixie from our Empire® Lace Wig line or dabble with salon quality colors from our Empire® Yaki weaving.

- 100% HUMAN HAIR
- SOFT & SMOOTH TEXTURE
- TANGLE FREE & SHED FREE
- LONG LASTING CURL RETENTION



New!
LACE WIG
STYLE

ERIN
AVAILABLE COLORS:
1, 1B, 2, 4, 99J,
F1B/27, F1B/30, F1B/99J



New! COLOR
EMPIRE YAKI 14"
COLOR SHOWN: T2/27/613

New! COLOR
EMPIRE YAKI 18" (STYLED)
COLOR SHOWN: T2/30/27

100% HUMAN HAIR *Color availability may vary by length.

EMPIRE YAKI COLORS

BASIC COLORS



GRAY COLORS



BALAYAGE SPECIAL COLORS



BOLD COLORS



PIANO COLORS



THREE-TONE COLORS



TWO-TONE COLORS



TWO-TONE SPECIAL COLORS



100% HUMAN HAIR | EMPIRE® YAKI

9.

Signed.
Sealed.
DELIVERED.



You "Butta" Not Pout – These Gorgeous Butta Lace® Styles Are Here And Ready To Slay! We've Even Re-Stocked Some Of Our Most Popular Styles Just In Time For The Holidays! Enjoy The Magic Of Virtually Undetectable HD LACE With Both Our Human Hair Blend Line And Our Original Premium Fiber Styles.

New!



butta
lace
100% PREMIUM FIBER
UNIT
18



butta
lace
100% PREMIUM FIBER
UNIT
9



butta
lace
100% PREMIUM FIBER
UNIT
12

New!



butta
lace
HUMAN HAIR &
PREMIUM FIBER BLEND
LOOSE
CURLY
32"

Styles Shown
From Left to Right

BUTTA UNIT 18
(100% PREMIUM FIBER)

Available Colors:
1, 1B, 2, FLAMBOYAGE BLONDE,
FLAMBOYAGE CHOCOLATE,
FLAMBOYAGE MOCHA,
MONEY PIECE BLONDE,
MONEY PIECE CARAMEL,
MONEY PIECE HAZEL,
T4/COPPER, T4/GOLDEN BROWN

BUTTA UNIT 9
(100% PREMIUM FIBER)

Available Colors:
1, 1B, 2, FLAMBOYAGE CHOCOLATE,
FLAMBOYAGE GOLD, T1B/4, T2/27,
T2/30, T2/350, T2/BG

BUTTA UNIT 12
(100% PREMIUM FIBER)

Available Colors:
1, 1B, 2, FLAMBOYAGE BLONDE,
FLAMBOYAGE MOCHA,
FLAMBOYAGE SAND,
MONEY PIECE BLONDE,
MONEY PIECE CARAMEL,
MONEY PIECE CHAMPAGNE,
MONEY PIECE HAZEL,
MONEY PIECE PLATINUM,
MONEY PIECE SANDY BLONDE

LOOSE CURLY 32"
(100% HUMAN HAIR & PREMIUM BLEND)

Available Colors:
1, 1B, 2, BALAYAGE CARAMEL,
BALAYAGE CHOCOLATE,
BALAYAGE GOLD,
BALAYAGE HAZELNUT,
BALAYAGE MOCHA, T4/ASH BLONDE,
T4/CHESTNUT BLONDE, T4/WINE



VICE®

HD LACE WIG

100% PREMIUM FIBER



VICE® HD LACE WIGS
 "too good to be wrong"
 ONE IS JUST NOT ENOUGH



VICE UNIT 1

VICE UNIT 2



VICE UNIT 3

VICE UNIT 4



VICE UNIT 8



VICE UNIT 9



VICE UNIT 10



VICE UNIT 7



VICE UNIT 5



VICE UNIT 6

Available Colors:
 1, 1B, 2,
 CHUNKY HIGHLIGHT 27,
 CHUNKY HIGHLIGHT 30,
 T2/27, T2/30, T2/350,
 T2/BG, T2/RED

Available Colors:
 1, 1B, 2,
 LT27/1, LT613/BLUE,
 LT613/PINK,
 TIP DYE 27, TIP DYE 613,
 TIP DYE HOT PINK,
 TIP DYE PURPLE

Available Colors:
 1, 1B, 2,
 BALAYAGE CARAMEL,
 BALAYAGE CHOCOLATE,
 BALAYAGE GOLD,
 BALAYAGE HAZELNUT,
 BALAYAGE MOCHA,
 T2/27, T2/30, T6/27613

Available Colors:
 1, 1B, 2,
 CHUNKY HIGHLIGHT 27,
 CHUNKY HIGHLIGHT 30,
 FLAMBOYAGE BLONDE,
 FLAMBOYAGE CHOCOLATE,
 FLAMBOYAGE MOCHA,
 FLAMBOYAGE SAND,
 MONEY PIECE CARAMEL,
 MONEY PIECE HAZEL

Available Colors:
 1, 1B, 2,
 CHUNKY HIGHLIGHT 27,
 CHUNKY HIGHLIGHT 30,
 FLAMBOYAGE AUBURN,
 FLAMBOYAGE BLONDE,
 FLAMBOYAGE CHOCOLATE,
 FLAMBOYAGE MOCHA,
 FLAMBOYAGE SAND

Available Colors:
 1, 1B, 2, 613,
 FLAMBOYAGE AUBURN,
 FLAMBOYAGE BLONDE,
 FLAMBOYAGE CHOCOLATE,
 FLAMBOYAGE MOCHA,
 FLAMBOYAGE SAND,
 MONEY PIECE CARAMEL,
 MONEY PIECE HAZEL

Available Colors:
 1, 1B, 2, 613,
 CHUNKY HIGHLIGHT 27,
 CHUNKY HIGHLIGHT 30,
 CHUNKY HIGHLIGHT BLONDE,
 FLAMBOYAGE BLONDE,
 FLAMBOYAGE CHOCOLATE,
 FLAMBOYAGE MOCHA,
 FLAMBOYAGE SAND

Available Colors:
 1, 1B, 2, 613,
 CHUNKY HIGHLIGHT 27,
 CHUNKY HIGHLIGHT 30,
 CHUNKY HIGHLIGHT BLONDE,
 FLAMBOYAGE BLONDE,
 FLAMBOYAGE CHOCOLATE,
 FLAMBOYAGE MOCHA,
 FLAMBOYAGE SAND

New



This Season

SPICE THINGS UP

With the New "Red Krush™" Color Collection From Shear Muse®, you are sure to find a red shade that compliments your taste. From Apple Red to Wine Red, there's a shade for every celebratory moment to spice up your holiday this season.



RED KRUSH™

Salon Inspired Cut & Color by Shear Muse®

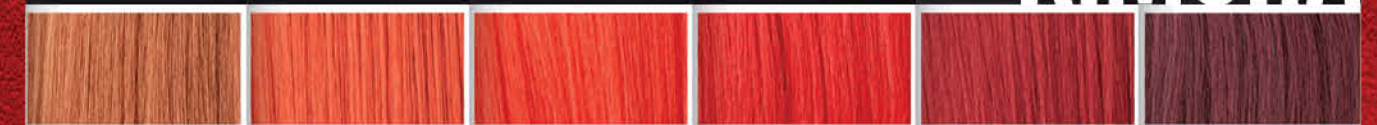
AVAILABLE STYLES:

KIMORA & SALISHA

AVAILABLE COLORS: 1, 1B, 2, APPLE RED, CARROT RED, CRIMSON RED, FIRE RED, GINGER RED, WINE RED



KIMORA



GINGER RED

CARROT RED

FIRE RED

APPLE RED

CRIMSON RED

WINE RED



SALISHA

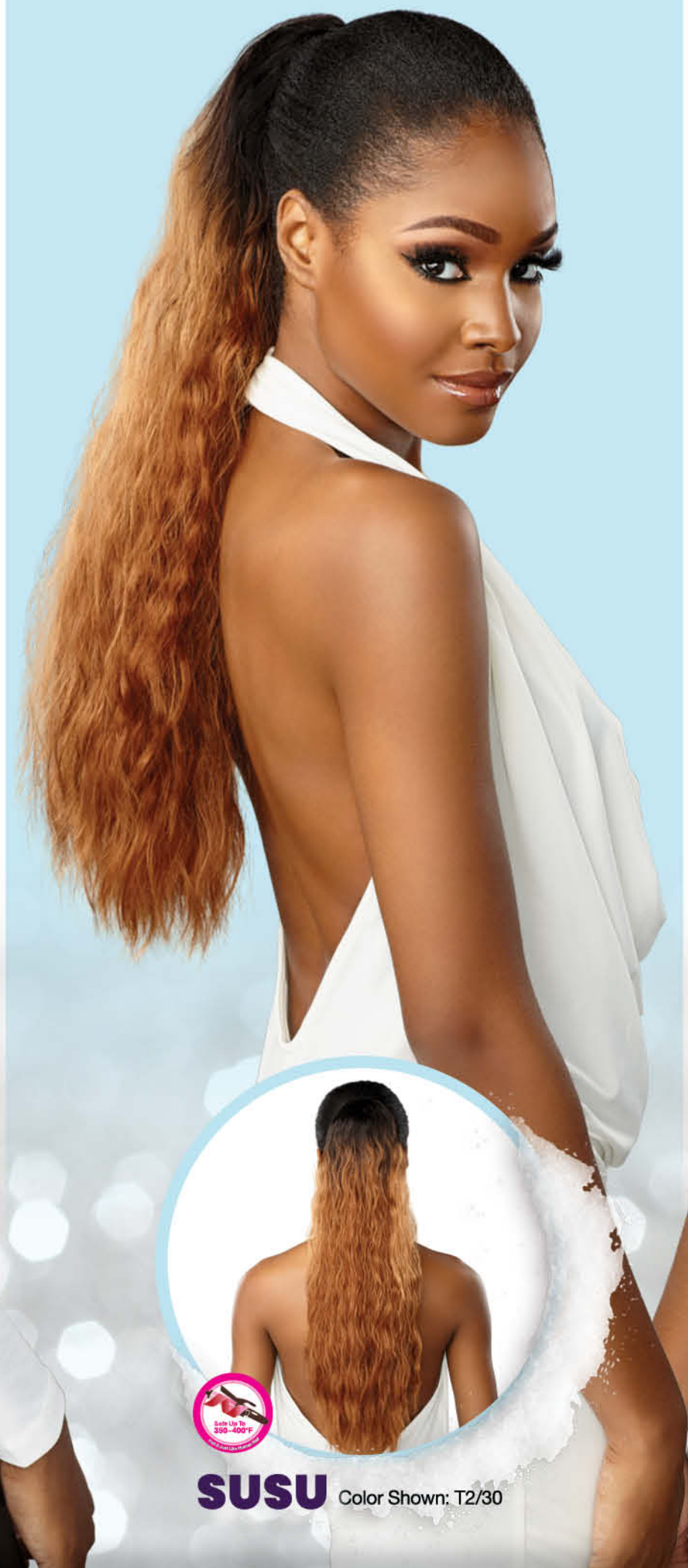
HD lace



New!



LALA Color Shown: T2/BG



SUSU Color Shown: T2/30



New!



NANA Color Shown: 1B

- FEATURES:**
- HELPS YOU CREATE A NEW, FASHION-FORWARD LOOK INSTANTLY.
 - VARIOUS CHOICES FOR ALL AND EVERY OCCASION.
 - PERFECT PROTECTIVE STYLE FOR ALL HAIR TYPES.
 - AFFORDABLE AND EASY TO MAINTAIN.

Available Colors: 1, 1B, 2, 4, F1B/30, T2/27, T2/30, T2/BG

*Color availability may vary by style



*Tis the Season
for Protective
Styling!*

The latest locs

Locs come in various shapes, sizes, and textures. See our latest additions, now available in new pre-looped styles.

- ✓ **Soft Texture, Natural Luster**
- ✓ **Light Weight Fibers**
- ✓ **Easy Styling & Maintenance**
- ✓ **Long-lasting Natural Look**
- ✓ **Easy to Install**

Lulutress®



New!

**2X WATER WAVE
LOCS 18"**

(PRE-LOOPED)

Available colors:
1, 1B, 2, 4, 27, 30, BG,
T1B/27, T1B/30, T1B/BG



New!

**3X TWIST LOCS
8"/10"/12"**

(PRE-LOOPED)

Available colors:
1, 1B, 2, 4, 27, 30, BG,
SM1B/27, SM1B/30,
SM1B/BG



**ONE
PACK
STYLE!**



**2X BUTTERFLY
LOCS II 18"**

(PRE-LOOPED)

Available colors:
1, 1B, 2, 4, 27, 30,
350, 613, BG



Aquatex® & Kanekalon® are registered trademarks of Kaneka Corporation. © 2021 Kaneka Corporation. All rights reserved.

RUWA®

Made With Aquatex® Fiber From Kanekalon®



LIGHT WEIGHT & SOFT



WATER REPELLENT



FLAME RETARDANT



FAST DRYING



HOT WATER SET

Model Style : 3X PRE-STRETCHED BRAID 24" Colors: 1B, VINTAGE ROSE

#SensationnelHair
©2021 Hair Zone, Inc.



WWW.SENSATIONNEL.COM