



SENSATIONNEL®

JUL/AUG 2021

Summer  
EDITION

#SensationnelHair



FACTORY DIRECT  
**12A**  
 UNPROCESSED  
 BUNDLE IMPORT

# WET & WAVY

**100% VIRGIN REMI BUNDLE**

BARE & natural

- 12A GRADE WET & WAVY BUNDLE HAIR
- CAN WEAR AS STRAIGHT OR CURLY
- CAN BLEACH OR DYE TO GIVE COLOR



WET & WAVY 12" + 14" + 16"



## 3X MULTI BUNDLE

CURRENT AVAILABLE STYLES :

**3X BOHEMIAN • 3X DEEP**

AVAILABLE LENGTH COMBINATIONS :

- 10", 12", 14" • 12", 14", 16" • 14", 16", 18"
- 16", 18", 20" • 18", 20", 22"

AVAILABLE COLORS : NATURAL, NATURAL BLACK

After Wet



## HD 4X4 LACE CLOSURES

CURRENT AVAILABLE STYLES :

**BOHEMIAN 12" • DEEP 12" KINKY BOHEMIAN 12"**

AVAILABLE COLORS : NATURAL, NATURAL BLACK



## IN THIS ISSUE...

### 100% VIRGIN HUMAN HAIR

- 2 12A Wet & Wavy Bundle Hair
- 3 12A Wet & Wavy 4x4 Lace Closure
- 4-5 12A Wet & Wavy HD Lace Wig
- 6 10A Full Wig
- 8-9 10A Headband Wig

### 100% HUMAN HAIR

- 7 Empire® Wig

### 100% HUMAN HAIR & PREMIUM BLEND

- 10 What Lace® | Butta Lace®

### HD LACE WIGS

- 4-5 12A Wet & Wavy HD Lace Wig
- 10 What Lace® | Butta Lace®
- 11 Empress | Shear Muse®
- 12-13 Vice™ | HD Lace Wig

### FULL WIGS & HALF WIGS

- 6 10A Full Wig
- 7 Empire® Wig
- 8-9 10A Headband Wig
- 8-9 Dashly® | Headband Wig
- 11 Instant Fashion Wig
- 14-15 Instant Weave® | Drawstring

### HAIR PIECES & PONYTAILS

- 14-15 Instant Weave® | Drawstring
- 16 Instant Bun™ With Bangs
- 17 Lulu Pony™

### BRAIDING HAIR

- 18-19 Lulu Mini™ | Kids Braid
- 20-21 Lulutress®
- 22-23 Ruwa®
- 24 X-Pression® | Kids Braid

STYLE NAME:  
**DEEP 22"**  
COLOR SHOWN: NATURAL



**New**  
PRODUCT

# RED, WHITE & NEW!

Our New 12A Wet & Wavy HD Lace Wigs Are Made With 12A Grade 100% Virgin Human Hair. Add Color When You Bleach Or Dye It! It's 12A Quality You Can Rely On All Summer Long.

AVAILABLE COLORS : NATURAL, NATURAL BLACK

- 12A Grade 100% Virgin Human Hair
- Wear Straight or Curly When Wet
- Ear to Ear HD Lace With Deep Hand-tied Parting
- Pre-plucked with Baby Hair
- BLEACH. PERM. DYE



### FEATURES:



**NATURAL HAIRLINE:**  
Pre-Plucked With Baby Hair  
For A Natural Look.



**HD LACE:**  
Virtually Undetectable HD Lace.



**MESH CAP:**  
Comfortable Fit, With Combs And  
Adjustable Straps For Security.



100% VIRGIN HUMAN HAIR  
BARE&natural

FACTORY DIRECT  
**12A**  
UNPROCESSED  
BUNDLE IMPORT



STYLE NAME:  
**KINKY BOHEMIAN 22"**  
COLOR SHOWN: NATURAL



STYLE NAME:  
**BOHEMIAN 22"**  
COLOR SHOWN: NATURAL



STYLE NAME:  
**KINKY BOHEMIAN 12"**  
COLOR SHOWN: NATURAL BLACK



STYLE NAME:  
**BOHEMIAN 12"**  
COLOR SHOWN: NATURAL



STYLE NAME:  
**DEEP 12"**  
COLOR SHOWN: NATURAL

100% VIRGIN HUMAN HAIR | 12A WET & WAVY

5.

# 10A Grade

With swoon-worthy reds, beachy waves and fresher than ever curls, these **10A Grade Virgin** styles are summer ready must-haves.



## LOOSE DEEP 12"

AVAILABLE COLORS:  
NATURAL, NATURAL BLACK,  
TT27, TT30, **TTBG**



## OCEAN WAVE 12"

AVAILABLE COLORS:  
NATURAL,  
NATURAL BLACK,  
TT27, **TT30**, **TTBG**



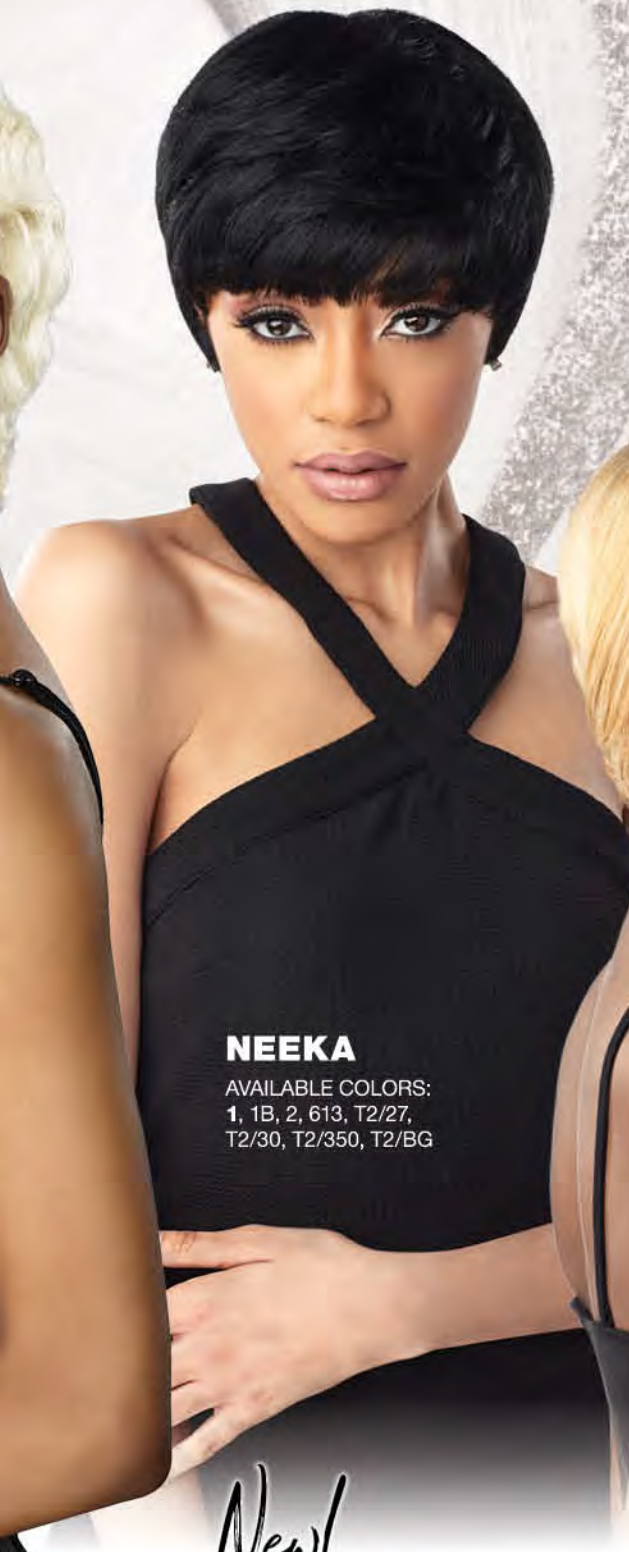
## JERRY CURL 11"

AVAILABLE COLORS:  
NATURAL,  
NATURAL BLACK,  
TH/27, TH/30, TH/BG



## JADA

AVAILABLE COLORS:  
1, 1B, 2, 27, 30, **613**, 99J,  
BG, DARK RED, GRAY,  
MATTE GRAY, RED



## NEEKA

AVAILABLE COLORS:  
1, 1B, 2, 613, T2/27,  
T2/30, T2/350, T2/BG



## KEMI

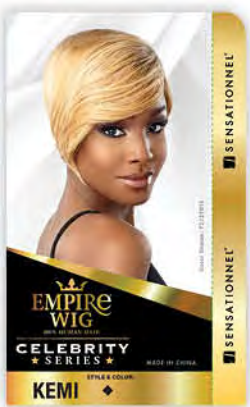
AVAILABLE COLORS:  
1, 1B, 2, 613, **T2/27613**,  
T2/30, T2/350, T2/BG

# Empire® Wig

Don't let summer pass you by. From White Hot to Electric Blonde, be ready in day to summer night styles with these fresh **Human Hair** picks.



*New!*



*New!*

**10A HEADBAND WIG**  
100% VIRGIN HUMAN HAIR

Style: Loose Deep 14"  
Color: Natural Black

**DASHLY®**  
**HEADBAND WIG**  
100% PREMIUM FIBER

Style: HB Unit 1  
Color: 1B



*New!*

# HEADBAND WIGS

## HUMAN HAIR & SYNTHETIC

Headband Wigs Are On-the-go Styles That Are Functional, Chic, And Great For Any Occasion. Sensationnel® currently features two brands of Headband wigs, one from our 10A Unprocessed 100% Virgin Human Hair collection, and the other from our affordable and noteworthy wig line, Dashly®.

**10A HEADBAND WIG**  
100% VIRGIN HUMAN HAIR



**BOHEMIAN 14"**  
Available Colors: Natural, Natural Black

**LOOSE DEEP 14"**  
Available Colors: Natural, Natural Black

**STRAIGHT 14"**  
Available Colors: Natural, Natural Black

**dashly®** 100% PREMIUM FIBER  
Headband Wig (Heat Safe up to 350-400°F)



Available Colors:  
1, 1B, 2, F1B/30, T2/27, T2/30, T2/BG

Available Colors:  
1, 1B, 2, F1B/30, TH2/27, TH2/30, TH2/BG

Available Colors:  
1, 1B, 2, F1B/30, T2/27, T2/30, T2/BG

100% VIRGIN HUMAN HAIR & 100% PREMIUM FIBER | HEADBAND WIGS

#TREND REPORT

# SUN KISSED Waves



### OCEAN WAVE 30" BUTTA LACE® HUMAN HAIR BLEND

AVAILABLE COLORS:  
1, 1B, 2, BALAYAGE CARAMEL,  
BALAYAGE CHOCOLATE,  
BALAYAGE GOLD, BALAYAGE HAZELNUT,  
BALAYAGE MOCHA, T4/ASH BLONDE,  
T4/CHESTNUT BLONDE, T4/WINE

#TREND REPORT

# BLAST from THE PAST

These iconic looks are making a huge come-back this season.



### JULENE INSTANT FASHION WIG

AVAILABLE COLORS:  
1, 1B, 2,  
MONEY PIECE CHOCOLATE,  
MONEY PIECE LATTE,  
PEEKABOO BLONDE, PEEKABOO BLUE,  
PEEKABOO RED, T2/27, T2/30,  
T2/350, T2/BG



### KESSIE SHEAR MUSE® LACE FRONT

AVAILABLE COLORS:  
PEEKABOO BABY BLUE, PEEKABOO BABY PINK,  
PEEKABOO BABY PURPLE, PEEKABOO NEON FIRE,  
PEEKABOO NEON LEMON, PEEKABOO NEON LIME,  
PEEKABOO NEON PINK, PEEKABOO NEON PURPLE,  
PEEKABOO NEON ROYAL BLUE,  
PEEKABOO NEON TANGERINE



### AKEEVA SHEAR MUSE® LACE FRONT

AVAILABLE COLORS:  
BABY BLUE, BABY PINK,  
BABY PURPLE, NEON FIRE,  
NEON LEMON, NEON LIME,  
NEON PINK, NEON PURPLE,  
NEON ROYAL BLUE,  
NEON TANGERINE

100% PREMIUM FIBER | SENSATIONNEL® WIGS

unit 8

unit 7

unit 6

VICE™ HD LACE WIGS  
“too good to be wrong”  
ONE IS JUST NOT ENOUGH



(LEFT)  
**VICE UNIT 7**

AVAILABLE COLORS:  
1, 1B, 2, 613,  
CHUNKY HIGHLIGHT 27,  
CHUNKY HIGHLIGHT 30,  
CHUNKY HIGHLIGHT BLONDE,  
FLAMBOYAGE BLONDE,  
FLAMBOYAGE CHOCOLATE,  
FLAMBOYAGE MOCHA,  
FLAMBOYAGE SAND

(MIDDLE)  
**VICE UNIT 8**

AVAILABLE COLORS:  
1, 1B, 2, 613,  
CHUNKY HIGHLIGHT 27,  
CHUNKY HIGHLIGHT 30,  
CHUNKY HIGHLIGHT BLONDE,  
FLAMBOYAGE BLONDE,  
FLAMBOYAGE CHOCOLATE,  
FLAMBOYAGE MOCHA,  
**FLAMBOYAGE SAND**

(RIGHT)  
**VICE UNIT 6**

AVAILABLE COLORS:  
1, 1B, 2, BALAYAGE CARAMEL,  
BALAYAGE CHOCOLATE,  
BALAYAGE GOLD,  
BALAYAGE HAZELNUT,  
BALAYAGE MOCHA,  
T2/27, T2/30, T6/27613

Summer Nights  
KEEP GETTING HOTTER WITH VICE™

100% PREMIUM FIBER | VICE™

Styled as:  
**UPDO**



Styled as:  
**HALF WIG**

2-IN-1 INSTANT WEAVE® DRAWSTRING

# BEAT *The* HEAT

Stay cool with the pull of a string! Our multi-functional Instant Weave® Drawstring brand, features half wigs with a drawstring cap that can be worn as a half wig or an up-do. Various textures and styles are available in basics, highlights, and two-toned colors.



Style Shown:  
**IWD 7**

Available Colors: 1, 1B, 2, 4, T1B/4, TH2/27, TH2/30, TH2/BG, TH2/COPPER

Styled as:  
**HALF WIG**



Styled as:  
**UPDO**



Style:  
**IWD 8**

Available Colors:  
1, 1B, 2, 4, T1B/4, T2/27,  
T2/30, T2/BG, T2/COPPER



Style:  
**IWD 9**

Available Colors:  
1, 1B, 2, 4, T1B/4, T2/27,  
T2/30, T2/BG, T2/COPPER



Style:  
**IWD 10**

Available Colors:  
1, 1B, 2, 4, T1B/4, TH2/27,  
TH2/30, TH2/BG, TH2/COPPER



# Sun's Out BUNS OUT!

The hotter the weather the higher the hair. Stay cool with the latest additions to our Instant Bun™ with Bangs brand. One is textured, the other is sleek; both are summer ready and stylish.

Available colors:  
1, 1B, 2, 4,  
F1B/30, F4/30



*New!*  
**ILA**  
INSTANT BUN™  
WITH BANGS

*New!*  
**JANA**  
INSTANT BUN™  
WITH BANGS

## MIMI LULU PONY™

Available colors:  
1, 1B, 2, 4, F1B/30, T2/27, **T2/30**, T2/BG



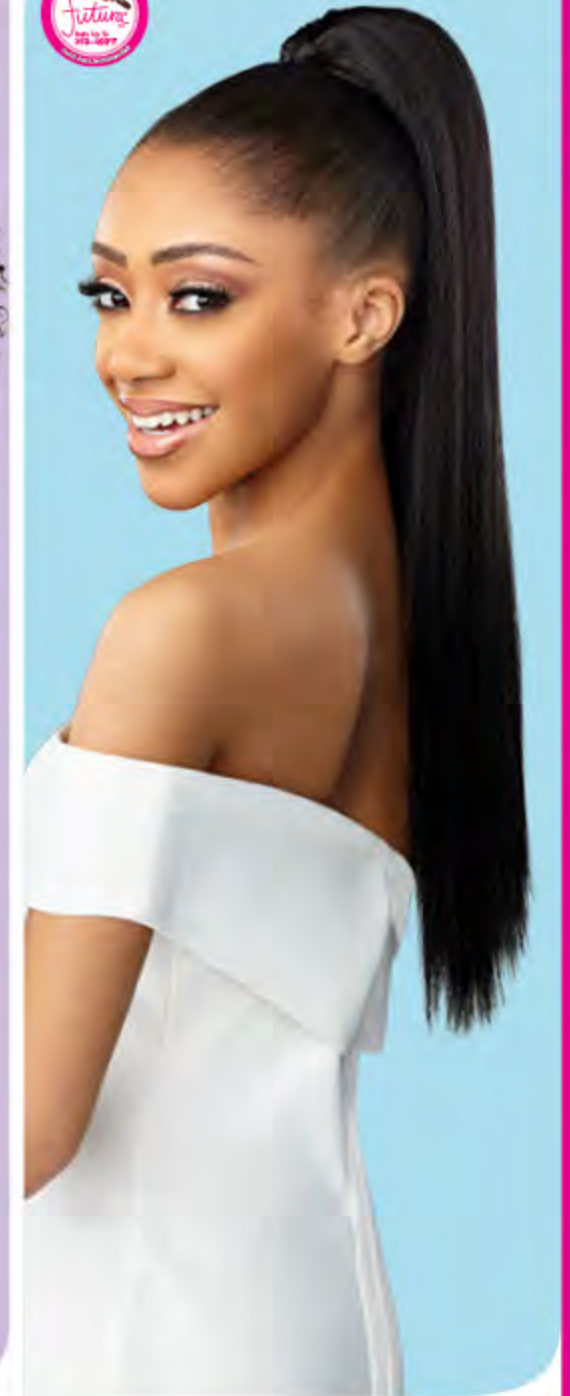
## ZAZA LULU PONY™

Available colors:  
1, 1B, 2, 4, F1B/30, TH2/27, **TH2/30**, TH2/BG



## JOJO LULU PONY™

Available colors:  
1, 1B, 2, 4, F1B/30, T2/27, T2/30, T2/BG



## QUICK, SIMPLE & STYLISH LULU PONY™

Since its launch the Lulu Pony™ brand has been a hit, serving up classic, no-fail ponytail styles, that are the perfect choice for all and every occasion.

# lulu mini™



▶ **SCAN CODE FOR TUTORIAL!**

VIEW MOM FRIENDLY DIY INSTALL:  
[bit.ly/LuluminiTutorial](http://bit.ly/LuluminiTutorial)

**New!**  
**PRE-LOOPED CROCHET BRAID**

**(PRE-LOOPED) 2X PASSION TWIST 10"**

Available Colors:  
1, 1B, 2, 4, 27, 30, BG,  
T1B/27, T1B/30, T1B/BG

**New!**  
**FULLY FOLDED CROCHET BRAID**

**(FULLY-FOLDED) 2X WATER WAVE 10"**

Available Colors:  
1, 1B, 2, 4, 27, 30, BG,  
T1B/27, T1B/30, T1B/BG

**New!**  
**FULLY FOLDED CROCHET BRAID**

**(FULLY-FOLDED) 2X DEEP WAVE 10"**

Available Colors:  
1, 1B, 2, 4, 27, 30, BG,  
T1B/27, T1B/30, T1B/BG

**New!**  
**FULLY FOLDED CROCHET BRAID**

**(FULLY-FOLDED) 2X BOHEMIAN 10"**

Available Colors:  
1, 1B, 2, 4, 27, 30, BG,  
T1B/27, T1B/30, T1B/BG



- SAFE FLAME RETARDANT HIGH QUALITY FIBER
- AFFORDABLE AND EASY TO MAINTAIN
- SOFT AND EASY ON MOMS HANDS
- GREAT FOR TENSION-FREE STYLING

# NEW from LULUTRESS®

POPULAR · PRETTY · PROTECTIVE

Make Lulutress® your go-to choice for all the trendiest crochet braids and protective styles. With styles like Butterfly Locs, Afro Twist, and now longer lengths in Bohemian, you can easily create your desired look.

- SOFT TEXTURE & NATURAL LUSTER
- EASY STYLING & MAINTENANCE
- LONG-LASTING NATURAL LOOK
- EASY TO INSTALL



**(PRE-LOOPED)**  
**2X BUTTERFLY LOCS II 18"**  
 Available colors:  
 1, 1B, 2, 4, 27, 30, 350, 613, BG



**3X AFRO TWIST 24"**  
 Available colors:  
 1, 1B, 2, 4, 27, 30, 350, 613, 99J, BG, M51, SM1B/27, SM1B/30, SM1B/BG



**(PRE-LOOPED)**  
**2X BOX BUTTERFLY 18"**  
 Available colors:  
 1, 1B, 2, 4, 27, 30, 613, BG, T1B/27, T1B/30, T1B/350, T1B/BG



**3X BOHEMIAN 20"**  
 Available colors:  
 1, 1B, 2, 4, 27, 30, 613, BG, T1B/27, T1B/30, T1B/BG

# RUWA®

Kanekalon®  
**AQUATEX**

Model is wearing:  
**3X PRE-STRETCHED 24"**  
Colors: 1B, Highlighted with a blend of  
NEON LIME, NEON ORANGE & BLUE

## Water Repellent **VACATION HAIR**

Ruwa® Is Coming In Hot This Summer With A Full Lineup Of Lengths, Colors, And Textures. Lightweight, water repellent and great for locs, twists, or braids; Ruwa® checks all the boxes when it comes to vacation-ready hair!



*New*  
**LENGTH**

**SPRING TWIST 12"**

Available Colors:  
1, 1B, 2, 4, 27, 30, 350, 613, 99J,  
BG, RED, SM1B/27, SM1B/30,  
SM1B/350, SM1B/BG

*New*  
**TEXTURE**

**3X BOHEMIAN 18"**

Available Colors:  
1, 1B, 2, 4, 27, 30, 350, 613, 99J,  
BG, RED, SM1B/27, SM1B/30,  
**SM1B/350, SM1B/BG, SM27/613**



New!

SENSATIONNEL®



# X-Pression®



New!  
Made Just for

# kids

### 3X KIDS PRE-STRETCHED BRAID 28"

Available Colors: 1, 1B, 2, 4,  
SM1B/27, SM1B/30, SM1B/350, SM1B/BG

- 100% Kanekalon®, Flame Retardant
- Light & Soft Touch
- Pre-Stretched, Pre-Layered
- Hot Water Set

